

T9216

Thousand Mile Canyon Trail

Sacramento Ranger District

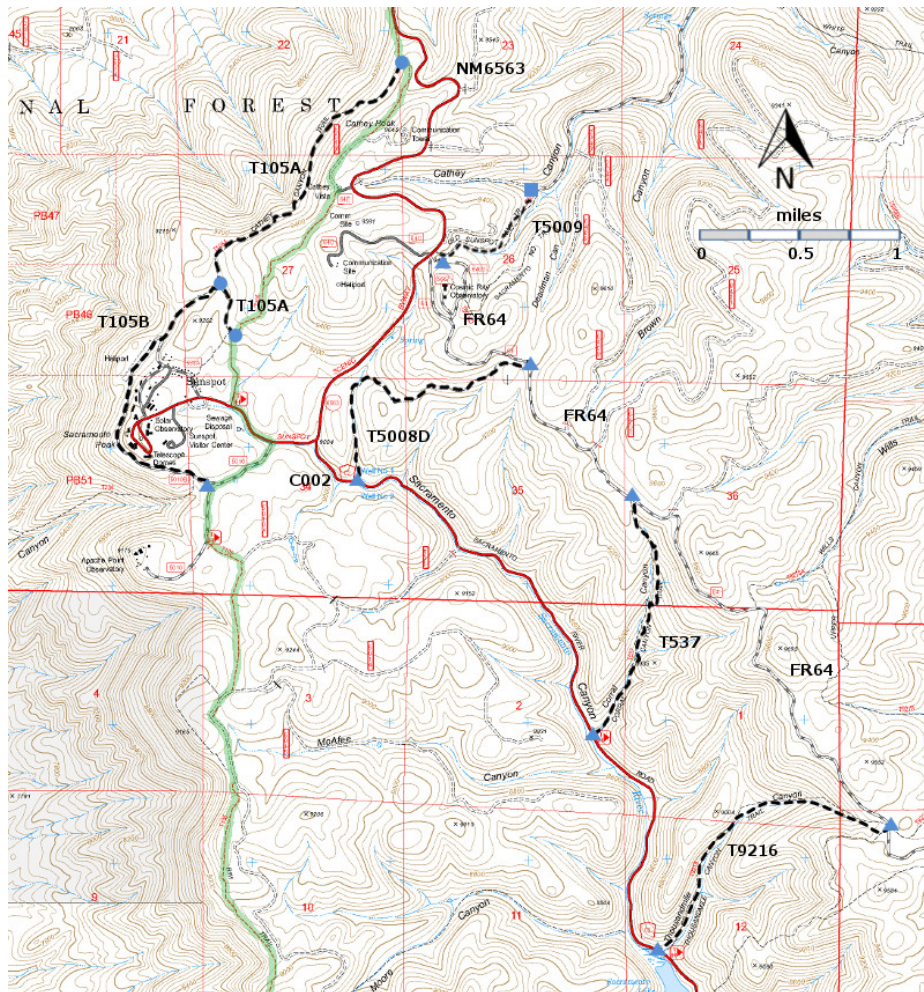


[T9216](#)
GPS Track (as .GPX)

Left click to open in your browser; then save from browser.

LENGTH	ELEVATION	DIFFICULTY	SCENERY
1.4 miles	8460 - 9400 ft 940 ft difference	Moderate	2

Allowed Usage				
✓	✓	✓	✓	✓



[Link to map color/symbol codes](#)

T105A, T105B, T537, T5008D, T5900, and T9216 are shown as black dashed lines on the map. T105 Rim Trail is shown as a green line.

NOTE: T537 and T9216 make an ideal 6.0 mile loop hike of which 3.3 miles are along the two roads that connect the trails -- 1.2 miles along Sacramento Canyon Road (County Road C002) and 2.1 miles on FR64.

DESCRIPTION: The most interesting part of T9216 is at mile 0.7 from the upper end. The canyon widens here and the route passes through a large scenic meadow with scattered trees and an earthen dam. Just 0.1 mile up canyon from the dam along the trail is a white fir with a 5.7 foot diameter! The gradient is easy to moderate.

ACCESS: To access the upper trailhead for T9216, begin in Cloudcroft at the NM130 and US82 intersection, and drive NM130 south for 1.8 miles. Turn right on NM6563, Sunspot Highway, and go 13 miles to milepost 13. Drive another 0.1 mile, angle left on graveled FR64, and drive 3.8 miles to the signed trailhead on the right. It is directly across the road from a FR64 sign, and the signed trailhead for T9277.

To access the lower trailhead for T9216 take NM 6563 to milepost 14. Drive another 0.2 mile to the Sunspot junction, the beginning of Sacramento Canyon Road (same as County C002). Drive C002 for 3.2 miles to the signed T537 trailhead on the left.

GPS Coordinates for Key Points

NAD83	Lat/Lon hddd mm ss.s	UTM (13 S)
Upper Trailhead	N32 45 44.7 W105 45 44.0	428605 3625205
Lower Trailhead	N32 45 15.8 W105 46 47.2	426955 3624327

Links to Other Resources

[Area Map](#)

[Sacramento Peak Topo Map](#)

Last Hiked: 8/22/2018

Updated 1/3/2016