

T9201
Spiller Canyon Trail
Sacramento Ranger District

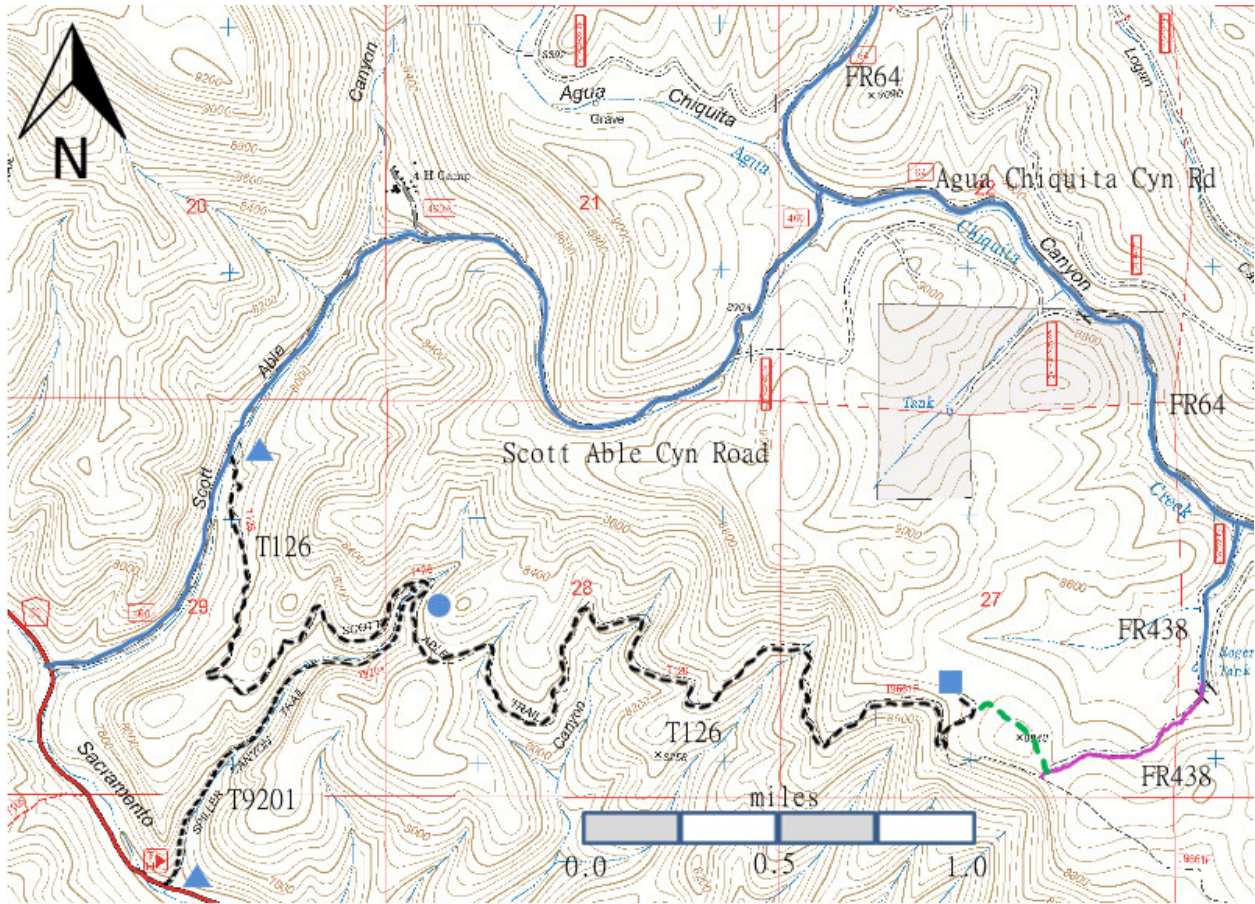


T9201
 GPS Track (as .GPX)

Left click to open in your browser; then save from browser.

LENGTH	ELEVATION	DIFFICULTY	SCENERY
0.9 miles	7,600-8,100 ft 500 ft difference	Moderate	1

Allowed Usage				



[Link to map color/symbol codes](#)

T126 and T9201 are shown as black dashed lines on the map.

DESCRIPTION: T9201 is a slightly winding, rather stony path that often becomes a mildly eroded gully passing through a narrow, forested canyon with some grades reaching 15% (30% maximum). Open areas are infrequent.

For those wanting to hike both T126 and T9201, consider hiking up T126, and on the return trip take T9201 from its upper end. Return to the lower T126 trailhead by hiking 1.4 miles along Sacramento River Road (FR537) and Scott Able Canyon Road (FR460).

ACCESS: To reach T9201, begin in Cloudcroft at the intersection of US 82 and NM130. Drive NM130 south 1.8 miles and turn right on NM6563, Sunspot Highway; follow the pavement 14 miles to milepost 14. Drive another 0.2 mile to the Sunspot junction, the turnoff for the Sunspot Highway (ending at Sunspot), and the beginning of paved County Road C002, also known as Sacramento River Road Drive and Forest Road FR537. Drive C002 7.5 miles to the signed Scott Able Canyon Road (FR460) intersection. Turn left and follow FR 460 0.75 mile to the lower T126 trailhead on the right. Access to the upper terminus for T9201 is gained by taking T126 1.2 miles from its lower end, or 2.8 miles from the upper end of T126.

To access the lower end of T9201, begin at the intersection of Sacramento River Road and Scott Able Canyon Road mentioned above and drive 0.7 mile to the signed trailhead on the left. No official parking is provided, so park in a wide spot along, or just off the road.

GPS Coordinates for Key Points

NAD83	Lat/Lon hddd mm ss.s	UTM (13 S)
Junction of T126 and T9201	N32 42 47.6 W105 43 43.0	431715 3619731
Trailhead	N32 42 10.0 W105 44 26.6	430573 3618580

Links to Other Resources

[Link to Full Topo Map](#)

Last Hiked: 2005

Updated 1/17/2016