

T568

Pines Trail

Sacramento Ranger District



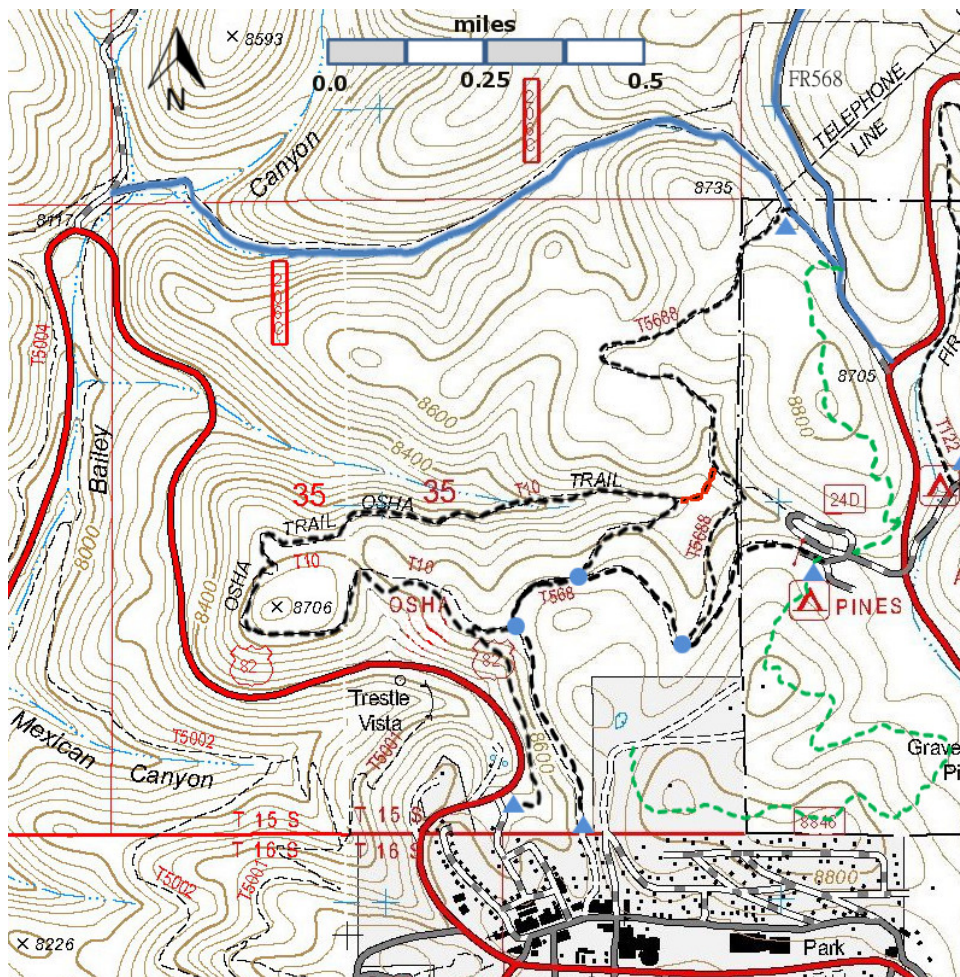
T568

GPS Track (as .GPX)

Left click to open in your browser; then save from browser.

LENGTH	ELEVATION	DIFFICULTY	SCENERY
1.0 miles	8,630-8660 ft 30 ft difference	Easy	2

Allowed Usage				
✓	✓	✓	✓	✓



[Link to map color/symbol codes](#)

T10, T568, and T5688 are shown as black dashed lines on the map.

DESCRIPTION: In the 1920's logging began north of Cloudcroft, and a railroad spur was built to connect with the Alamogordo and Sacramento Mountains railway line to Alamogordo. With this connection, logs could be moved to the sawmills in Alamogordo. The spur began near the present day intersection of NM130 and US82, and ran just east of the present day post office. It continued across Burro Avenue and north along the present Osha Trail Road. It passed through the present Pines Campground, and continued along the path of the present day FR568. The path is not continuous; the construction of NM 244 removed part of the railbed north of the Pines Campground. Indeed, if one hikes along FR568, the old railbed winds north past La Luz Canyon Road (FR162) into the Mescalero Reservation. Note: North of FR162, the old railbed is on private property.

A walk along T568 (and FR568) allows one to "follow the logs" and imagine the logging days now past. A FS gate at the Cloudcroft end of T568 prevents vehicles from accessing the trail.

ACCESS: Access to the southern end of T568 requires crossing private property. However, T568 can be accessed by hiking up T10 Osha Trail. T568 and T10 are the same trail for about 500 feet.

To reach the Pines Campground end of T568, begin in Cloudcroft at the US82 and NM130 intersection and drive US82 east 1.3 miles to its junction with NM244. Turn left and follow NM 244 northwest 0.4 mile to the Pines Campground turnoff on the left. Enter the campground and drive 0.1 mile to the campground host site. After informing the host of your plans, continue driving and follow the sign to the Chipmunk Loop (left fork). Park near the toilet area and look for the wide flat unpaved ground that is characteristic of old railbed. The signed trailhead is near a gate across the old railbed. The campground host may ask you to park at another location and walk to the trailhead.

Note: T568A, described in the 2002 edition of the *Trail Guide: Lincoln National Forest*, is now part of T568.

GPS Coordinates for Key Points

NAD83	Lat/Lon hddd mm ss.s	UTM (13S)
Cloudcroft Trailhead	N32 57 39.5 W105 44 37.4	430492 3647205
Junction of T10 and T568 (closer to Cloudcroft)	N32 57 55.4 W105 44 43.7	430334 3647697
Junction of T10 and T568 (further from Cloudcroft)	N32 57 59.3 W105 44 37.9	430484 3647817
Pines Trailhead	N32 58 00.8 W105 44 13.9	431108 3647857

Links to Other Resources

[Link to map of Cloudcroft Area](#)
[Link to Full Topo Map](#)
[Forest Service Resource](#)