

T5688

Pines North Trail

Sacramento Ranger District



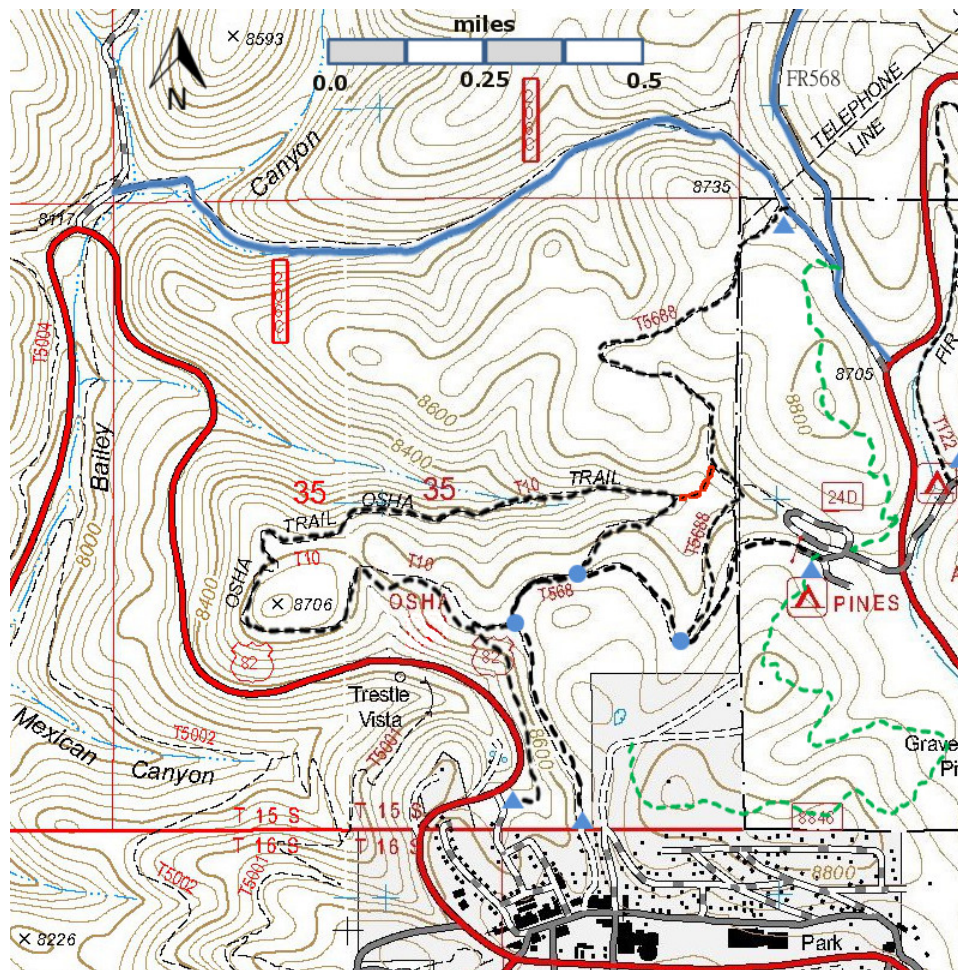
T5688

GPS Track (as .GPX)

Left click to open in your browser; then save from browser.

LENGTH	ELEVATION	DIFFICULTY	SCENERY
1.0 miles	8,550-8680 ft 130 ft difference	Moderate	2

Allowed Usage				
✓	✓	✓	✓	✗



[Link to map color/symbol codes](#)

T10, T568, and T5688 are shown as black dashed lines on the map

DESCRIPTION: T5688 provides a nice forest hike. Beginning off T568, signed T5688 starts along the side of a hill and then ascends to a scenic, wooded, broad ridge in 0.6 miles. The path descends slightly, then briefly follows a logging road, and climbs (12% grade) through forest before finally descending to a small, pleasant, primitive campsite adjacent to FR206C. For those starting at the northern end, the trail ascends for 0.1 miles and then makes a right turn away from the open area. Watch for this unsigned right turn. For users coming from the northern end, it is tempting to take a shortcut on a closed unofficial trail across a meadow to T10. Please assist the Forest Service in its restoration efforts and stay on T5688, which takes the right fork at a trail junction 200 feet further on.

ACCESS: To reach the southern end of T5688, you may start from Cloudcroft or Pines Campground because T5688 makes a junction with T568. To start from the Cloudcroft end of T568, begin at the intersection of US82 and NM130, and drive one block east along US82. Turn left on Curlew at the Allsup's store and drive one block to Burro Avenue. Turn right and drive to the second street going left, signed Mexican Avenue/Osha Trail. Turn left; the road soon splits into Mexican Avenue and Osha Trail Road. Follow the level Osha Trail Road. This route requires access across private land, and that access is currently limited to non-motorized traffic.

The signed T5688 trailhead is 0.7 miles from the start of T568, or stated another way, about 0.2 miles after the second junction of T568 and T10. To start from the Pines Campground end of T568, locate the T568 trailhead, and hike 0.3 miles along T568. From its junction with T568, T5688 curves northeast along the hill and then bends back toward the northwest.

To reach the northern end of T5688, begin in Cloudcroft at the US82 and NM130 intersection, and drive US82 east for 1.3 miles to the NM244 turnoff on the left. Follow NM244 northeast for 0.8 miles to its junction with FR568 on the left. Follow FR568 northwest 0.2 mile to its junction with FR206C. Follow FR206C for 0.2 miles. A primitive campsite and the beginning of T5688 are on the left

GPS Coordinates for Key Points

NAD83	Lat/Lon hddd mm ss.s	UTM (13 S)
Trailhead (at FR206C)	N32 58 29.6 W105 44 17.7	431016 3648744
Junction of T568 and T5688	N32 57 53.6 W105 44 27.	430748 3647639

Links to Other Resources

[Link to map of Cloudcroft Area](#)

[Link to Full Topo Map](#)

[Forest Service Resource](#)