

T5661C

Pumphouse Ridge 1 Trail

Sacramento Ranger District



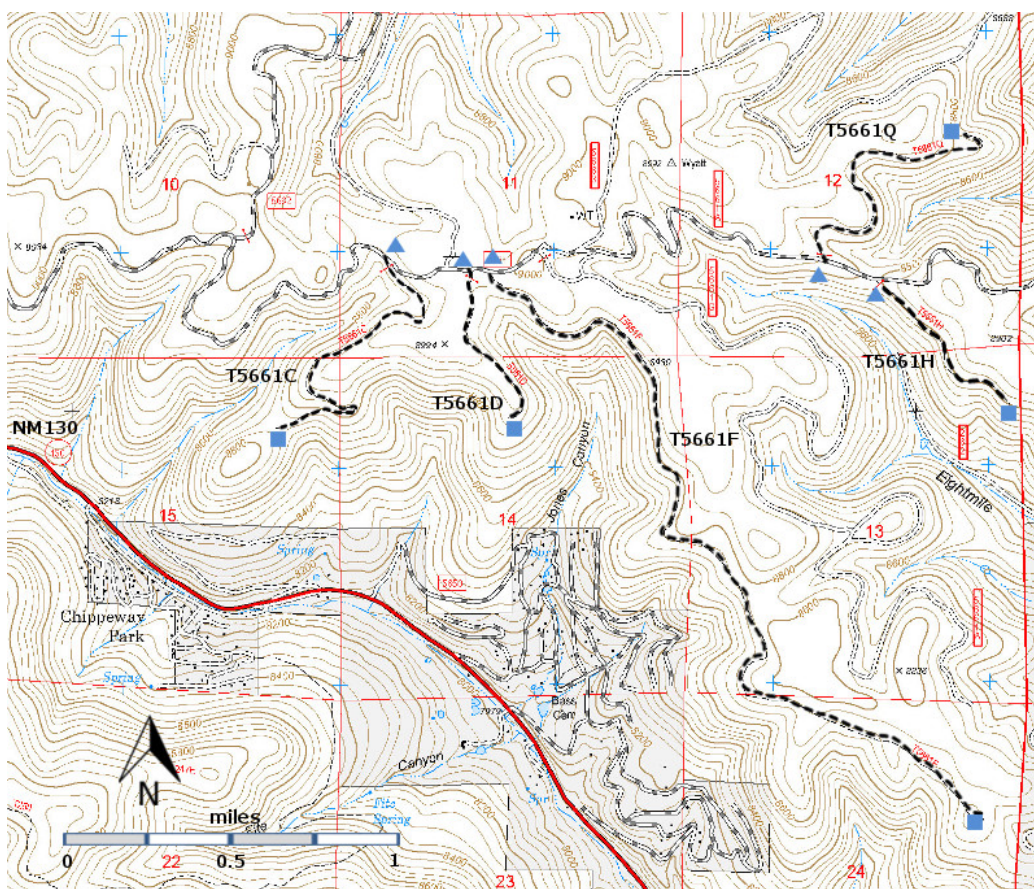
T5661C

GPS Track (as .GPX)

Left click to open in your browser; then save from browser.

| LENGTH | ELEVATION | DIFFICULTY | SCENERY |
|-----------|-------------------------------------|------------|---------|
| 1.1 miles | 8760 - 8920 ft 160 ft difference | Easy | 2 |

| Allowed Usage | | | | |
|---------------|---|---|---|---|
| | | | | |
| ✓ | ✓ | ✓ | ✓ | ✗ |



[Link to map color/symbol codes](#)

T5661C, T5661D, T5661F, T5661H, and T5661Q are shown as black dashed lines on the map.

DESCRIPTION: All of the Pumphouse Ridge trails are closed logging roads, 15 feet and more in width, usually with some grass cover. Gradients are usually around 5%; the maximum is 12%. Distant views vary from completely open to totally obscured by trees. Because of extremely low use, a definite path may not be discernible, but the old road alignments are readily apparent. Slash piles are here and there. Most trails pass unsigned old timber roads that can also be hiked. All numbered trails end at signed locations.

Several former, unnumbered timber roads branch from FR5661 and invite exploration. Nice, primitive campsites are scattered along this access road that ends at a turnaround in 8.0 miles from FR24B

Several former, unnumbered timber roads branch from FR5661 and invite exploration. Nice primitive camping sites are scattered along this access road that ends at a turnaround 8.0 miles from FR24B.

ACCESS: To reach Pumphouse Ridge, begin in Cloudcroft at the New Mexico NM130 and US82 intersection. Travel NM130 south 1.1 miles to a large Deerhead Campground sign on the right. Note the small Sleepy Grass Campground sign on the right just beyond the large sign. Angle left off NM130 and follow the narrow, paved FR24B leading to three campgrounds. At mile 0.7 from NM130, just before the parking area for La Pasada Encantada Trail, turn right on FR5661. *Zero your trip odometer here.* Drive the occasionally rough road the following distances to reach these trailheads: mile 4.8, T5661C on right; mile 5.2, T5661D on right immediately after crossing a cattle guard; mile 5.3, T5661F on right; mile 6.6, T5661Q on left *just prior* to crossing a 0.2 mile long, narrow ridge; mile 6.8, T5661H on right, *immediately after* crossing the same ridge.

GPS Coordinates for Key Points on T5661C

| NAD83 | Lat/Lon hddd mm ss.s | UTM (13 S) |
|-----------|-----------------------------|-------------------|
| Trailhead | N32 55 23.2 W105 41 34.4 | 435216 3642977 |
| Trail End | N32 54 57.5 W105 41 53.6 | 434714 3642188 |

Links to Other Resources

[Cloudcroft Topo Map](#)

Last Hiked: 2020

Updated 2/4/2021