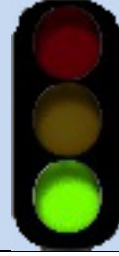


T5601A
Apple Tree Canyon II Trail
Sacramento Ranger District

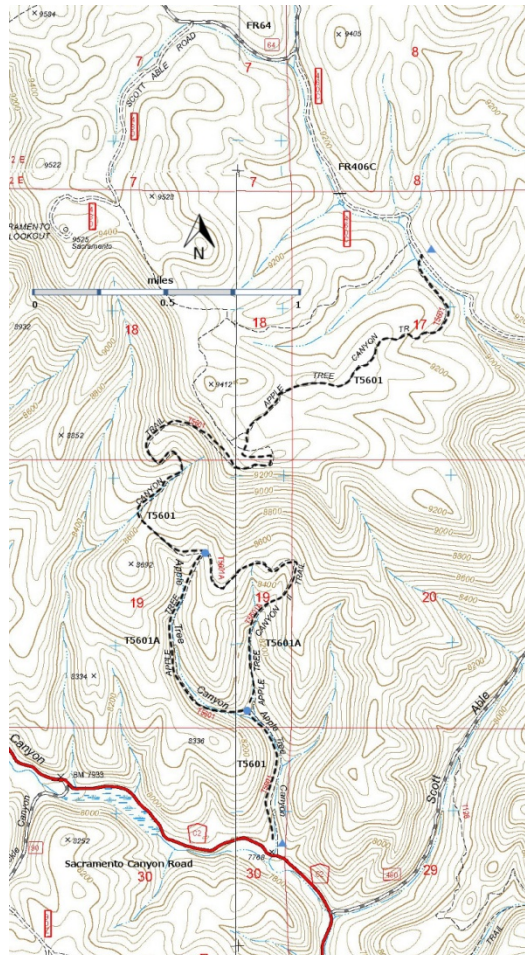


T5601A
 GPS Track (as .GPX)

Left click to open in your browser; then save from browser.

LENGTH	ELEVATION	DIFFICULTY	SCENERY
1.1 miles	8000 - 8480 ft 480 ft difference	Moderate	2

Allowed Usage				



[Link to map color/symbol codes](#)

T5601 and T5601A are shown as black dashed lines on the map.

DESCRIPTION: T5601A is easy to track and passes entirely through forested area. From its upper terminus, it follows an old timber road. After 0.2 mile it passes the junction with another timber road from the left. Proceed straight ahead here. Trail users coming up trail should be careful here to *take the left fork* because it would be easy to take the right fork, the wrong trail. After 0.9 mile from its upper terminus, and after passing through a fairly level area, T5601A descends into a canyon with a grade up to 25%, and ends on T5601.

ACCESS: Both ends of T5601A are accessed from T5601.

GPS Coordinates for Key Points

NAD83	Lat/Lon hddd mm ss.s	UTM (13 S)
Upper Junction of T5601 and T5601A	N32 43 46.3 W105 45 07.1	429539 3621553
Lower Junction of T5601 and T5601A	N32 43 15.2 W105 44 56.8	429800 3620594

Links to Other Resources

[Bug Scuffle Topo Map](#)

[Graveyard Canyon Topo Map](#)

Last Hiked: 8/19/2018

Updated 1/3/2019