

# T5579

## Mineral Springs Trail

### Sacramento Ranger District



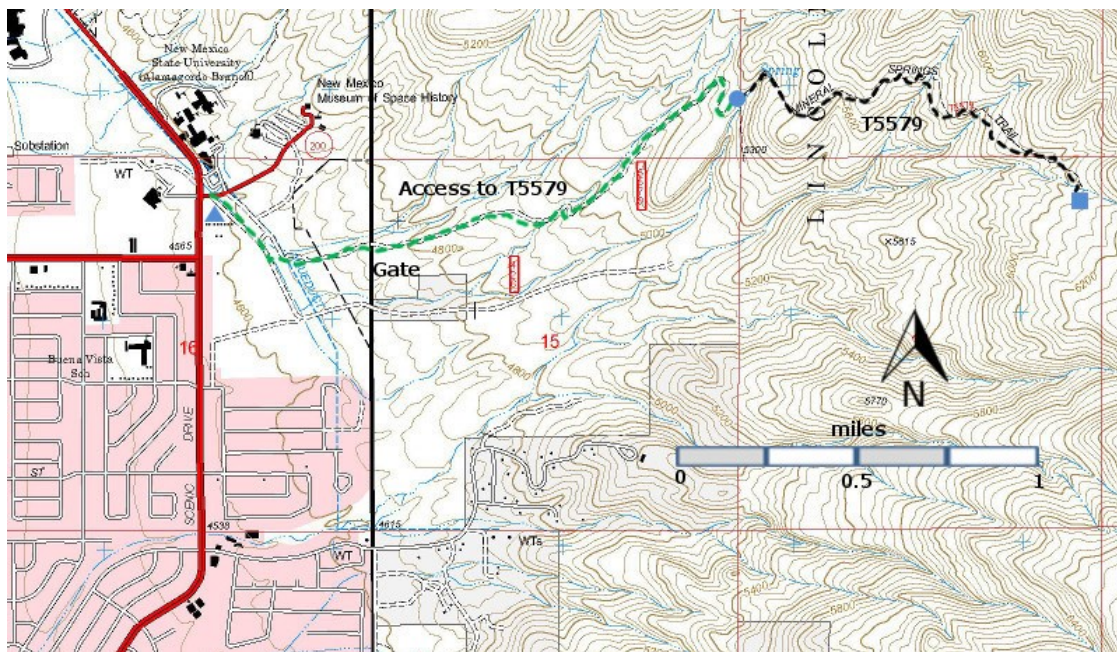
**T5579**

GPS Track(as .GPX)

Left click to open in your browser; then save from browser.

LENGTH	ELEVATION	DIFFICULTY	SCENERY
3.4 miles See Text	4600 - 6120 ft 1520 ft difference	Moderate	3

Allowed Usage				
✓	✓	✓	✓	✗



[Link to map color/symbol codes](#)

T5579 is shown as a black dashed line on the map.

**DESCRIPTION:** T5579 Mineral Spring Trail provides a substitute for the hiking experience obtained with the now closed T118 Goat Springs Trail. Both trails lead to springs, pass near the edge of rock benches with good views, and reach to grasslands at their upper ends.

The official length of T5579 is 1.4 miles, but a better description is the distance from Road 2001 near the Space Museum to the official end, 3.4 miles. The access to T5579 passes through arid, rocky land, with more than adequate amounts of catclaw. Views to the west of Alamogordo and the mountains to the west become better as one ascends.

About 0.2 miles after the official start of T5579, Mineral Spring is reached. Pause to consider the amount of effort required to open the access. The trail climbs and proceeds along the edge of a bench. Enjoy the views. 0.6 miles past the spring, there is a large isolated rock. Nothing special, but if you need a bit of shade this may be your only chance. The trail official ends at a draw 0.6 miles past the rock. However, the path continues, and you may hike as your wish in the grasslands. There are many paths in these grasslands, and you should mark the intersections so that you can return home along the path you took.

**ACCESS:** Access to T5579 requires crossing of property not owned by the Forest Service, and access may be denied at any time.

From the intersection of Indian Wells Road and Scenic Drive in Alamogordo, drive 40 yards east and park. The next step is to locate an unsigned old road that runs north-south and the old road running east from it. There are two ways to proceed: (1) you may bushwhack 0.2 miles (approximately) east, across gravel and through catclaw, or (2) you may take a 0.6 mile, less demanding route. For the second route, hike north on Scenic Drive to Road 2001 which leads uphill to the Space Museum. Turn right on 2001 and look for an old road going off to the right (south). There is a large “Road Closed” sign. Follow this road. When it crosses a draw, a large water pipe is exposed. Follow the water pipe, and 30 yards after you come out of the draw, the old road that runs (approximately) east comes into view. There are no markers for these roads, but the road to the east follows the line of Indian Wells Road, and you should be able to look back to the west, straight down Indian Wells Road. If you have made the correct choice, about 40 yards east there is an old “T5579” carsonite sign. You will be encouraged that you are on the right path, but you have not yet reached T5579.

Hike 0.2 miles east on the old road to a barbed wire fence with a faded “5579” sign. Follow the old road 1.3 miles further, and as you come out of an “S” curve, you will reach the official start of T5579. The GPX track provided is for the “full hike”.

### GPS Coordinates for Key Points

NAD83	Lat/Lon hddd mm ss.s	UTM (13 S)
Trail Start	N32 55 17.4 W105 54 02.9	415775 3642944
Trail End	N32 55 03.8 W105 53 02.7	417335 3642513

### Links to Other Resources

[Area Map](#)

[Alamogordo North Topo Map](#)