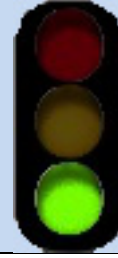


T5543

Lick Canyon Trail

Sacramento Ranger District



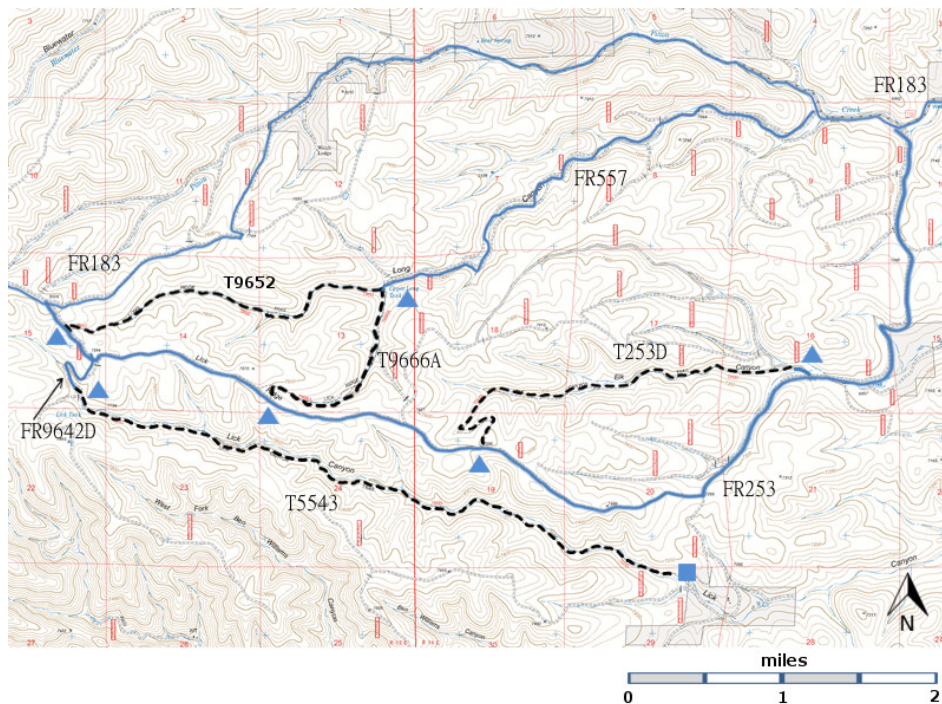
T5543

GPS Track (as .GPX)

Left click to open in your browser; then save from browser.

| LENGTH | ELEVATION | DIFFICULTY | SCENERY |
|-----------|------------------------------------|------------|---------|
| 4.3 miles | 7080 -7780 ft 700 ft difference | Moderate | 2 |

| Allowed Usage | | | | |
|---------------|---|---|---|---|
| | | | | |
| ✓ | ✓ | ✓ | ✓ | ✓ |



[Link to map color/symbol codes](#)

T253D, T5543, T9646F, T9652, and T9666A are shown as black dashed lines on the map.

DESCRIPTION: T5543 follows an old timber road along the canyon bottom, with a nearly constant grade of 3%. At mile 4.3, the eastern (lower) end of the trail is marked with an “End of Trail” sign, where the old road enters private property. Do not continue on to private property, but rather, reverse course and return along T5543.

CAUTION: FR253 can be a really tough drive. There are large rocks and/or ledges. In the wet season it can be soft and muddy. Even when it is dry, there may be deep ruts. In recent years many dead trees have fallen across FR253, and they may block the road.

ACCESS: You may wish to hike more than one trail when you make the drive to the (remote) Piñon Draw area. The write up for T253D contains a table giving distances between the trailheads and a table giving trail lengths and altitude changes. The eastern intersection of FR183 and FR253 is 6.0 miles from NM 24.

Lower Trailhead: Not accessible by vehicle.

Upper Trailhead: From the eastern junction of FR183 and FR253, drive 7.9 miles along FR253 to the signed junction with FR9642D on the left. Follow FR9642D 0.5 miles to the upper trailhead of T5543.

Alternate Route:

Lower Trailhead: Not accessible by vehicle.

Upper Trailhead: From the western junction of FR183 and FR253, drive 0.5 miles along FR253 to the signed junction with FR9642D on the right. Follow FR9642D 0.5 miles to the upper trailhead of T5543.

GPS Coordinates for Key Points

| NAD83 | Lat/Lon hddd mm ss.s | UTM (13 S) |
|-----------------|-----------------------------|-------------------|
| Upper Trailhead | N32 38 55.1 W105 35 45.2 | 450256 3610608 |
| Lower Trailhead | N32 37 54.9 W105 31 49.1 | 444116 3612492 |

Links to Other Resources

[Link to Full Topo Map](#)

Last Hiked: November 13, 2013

Updated 1/16/2016