

T5007B

Shortcut Trail

Sacramento Ranger District



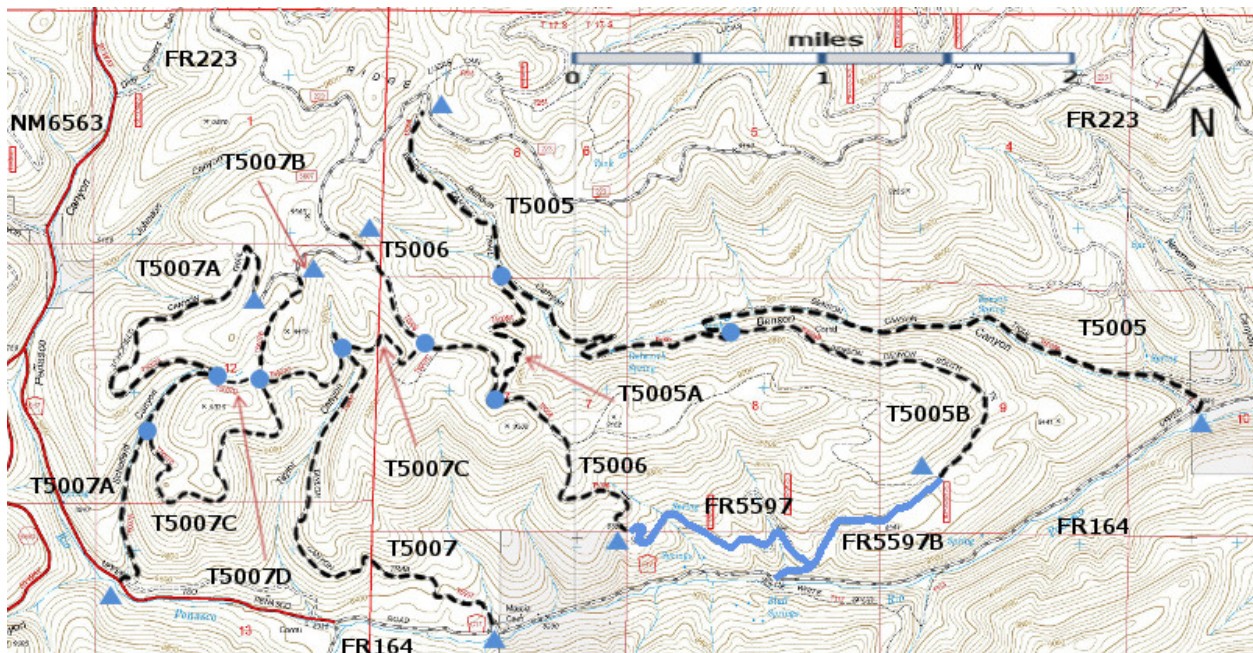
T5007B

GPS Track (as .GPX)

Left click to open in your browser; then save from browser.

LENGTH	ELEVATION	DIFFICULTY	SCENERY
0.5 miles	9250 - 9450 ft 200 ft difference	Easy	3

Allowed Usage				



[Link to map color/symbol codes](#)

T5005, T5005A, T5005B, T5006, T5007, T5007A, T5007B, T5007C, and T5007D are shown as black dashed lines on the map. The roads FR5597 and FR5597B are shown as solid blue lines.

NOTE: Trials T5007, T5007A, T5007B, T5007C, and T5007D provide a myriad of opportunities for a variety of loop trips in relatively isolated areas. Use the map to plan any of several combinations. Each will be scenic in its own way.

DESCRIPTION: 5007B is an old road (0.5 miles) that connects FR5007 with T5007C.

ACCESS: To reach the upper end of T5007B, begin in Cloudcroft at the NM130 and US82 intersection, and drive NM130 south 1.8 miles. Turn right on NM6563, Sunspot Highway; drive to milepost 6 along Sunspot Highway. The junction with FR 223, Benson Ridge Road, is just 0.5 mile south from here. Turn east and follow FR 223 to mile 3.3 where it crosses a cattle guard just before a tee. At the tee, turn right on signed FR5007, and follow the primitive road 0.8 miles (just 0.3 miles beyond the signed T5006 trailhead) to the signed upper T5007B trailhead.

The lower end of T5007B is a junction with T5007C and T5007D. See the T5007C write up for details.

GPS Coordinates for Key Points

NAD83	Lat/Lon hddd mm ss.s	UTM (13 S)
Upper Trailhead	N32 50 54.0 W105 46 09.3	428016 3634735
Junction of T5007B and T5007C	N32 50 32.7 W105 46 17.9	427788 3634081

Links to Other Resources

[Area Map](#)

[Sacramento Peak-Bluff Springs Topo Maps \(joined\)](#)

[Forest Service Resource](#)

Last Hiked: 2005

Updated 2/19/2017