

# T5006

## Benson Ridge/Bluff SprinsTrail

### Sacramento Ranger District



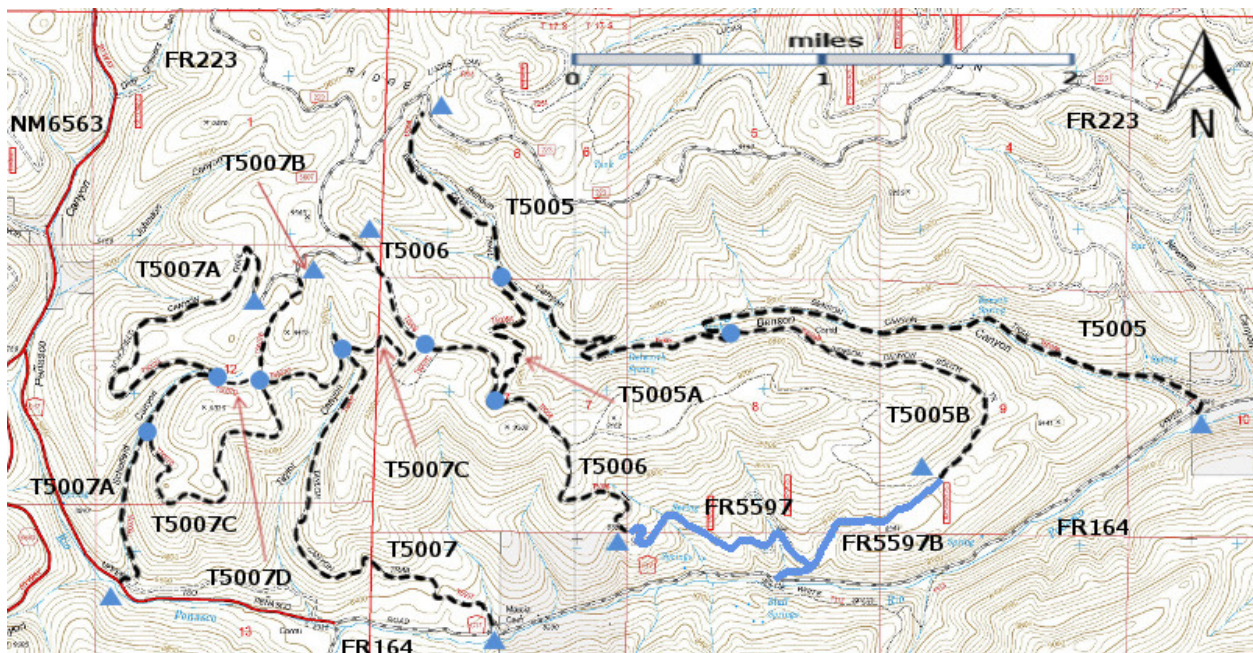
### T5006

GPS Track (as .GPX)

Left click to open in your browser; then save from browser.

LENGTH	ELEVATION	DIFFICULTY	SCENERY
2.3 miles	8600 - 9440 ft 840 ft difference	Difficult	3

Allowed Usage				
✓	✓	✓	✓	✓



[Link to map color/symbol codes](#)

T5005, T5005A, T5005B, T5006, T5007, T5007A, T5007B, T5007C, and T5007D are shown as black dashed lines on the map. The roads FR5597 and FR5597B are shown as solid blue lines.

**DESCRIPTION:** Beginning at its upper end, T5006 follows an abandoned, 10 foot wide former timber road with a 5% gradient for 1.3 miles.. From its upper end are junctions with T5007C at mile 0.5 on the right, and with T5005A at mile 1.0 on the left. At mile 1.3, T 5006 turns right, leaves the ridge, and heads down through heavily forested areas. Gradients range up to 35% before the path joins a narrow,

abandoned timber road at mile 1.6. Beyond here, maximum grades are 10%. The route intersects several other old timber roads.

Signed FR5597 begins at mile 2.2, at the lower T5006 terminus. From here the scenery becomes considerably more varied and beautiful as the primitive road skirts the edges of several small meadows where water is often present. This narrow rough track is enjoyed more by hiking than by driving.

**ACCESS:** To reach the upper end of T5006, use a high clearance vehicle and begin in Cloudcroft at the intersection of NM130 and US82. Drive NM130 south 1.8 miles; turn right and follow NM6563, Sunspot Highway, 6 miles to milepost 6. Go another 0.2 miles, turn left on FR223, Benson Ridge Road. Follow the improved road 3.3 miles across a conspicuous cattle guard to a tee in the road. Turn right on signed FR5007, and follow this primitive route 0.5 mile to the signed T5006 trailhead; T5006 begins here and goes straight ahead, while FR5007 angles slightly right.

To reach the lower end of T5006, drive to milepost 8 along Sunspot Highway. Go another 0.5 mile, and at the bottom of the hill turn left on Rio Penasco Road (same as FR164 County Road C017). After the pavement ends at mile 1.9, drive straight ahead to mile 3.7, arriving at Bluff Springs Recreation Site. Turn right to park.

If you are using a high clearance, 4-wheel drive vehicle, you can drive to the lower T5006 trailhead, although *it is not recommended*. Open and close the gate on the opposite side of FR164 from the Bluff Springs area and go up FR5597 for 0.2 mile to a junction with FR5597B. Turn left and continue following FR5597 to its end 1.3 miles from the Bluff Springs parking area. The road ends at the T5006 trailhead.

Be aware that FR5597 is narrow, severely rutted and rough in places.

#### GPS Coordinates for Key Points

NAD83	Lat/Lon hddd mm ss.s	UTM (13 S)
Upper Trailhead	N32 51 01.8 W105 45 56.6	428347 3634975
Junction of T5006 and T5007C	N32 50 40.4 W105 45 37.5	428840 3634311
Junction of T5005A and T5006	N32 50 28.4 W105 45 21.0	429265 3633939
Lower Trailhead	N32 50 01.9 W105 44 48.1	430115 3633117

#### Links to Other Resources

[Area Map](#)

[Sacramento Peak-Bluff Springs Topo Maps \(joined\)](#)

[Forest Service Resource](#)

Last Hiked: 2005

Updated 1/18/2016