

T5005

Benson Canyon Trail

Sacramento Ranger District



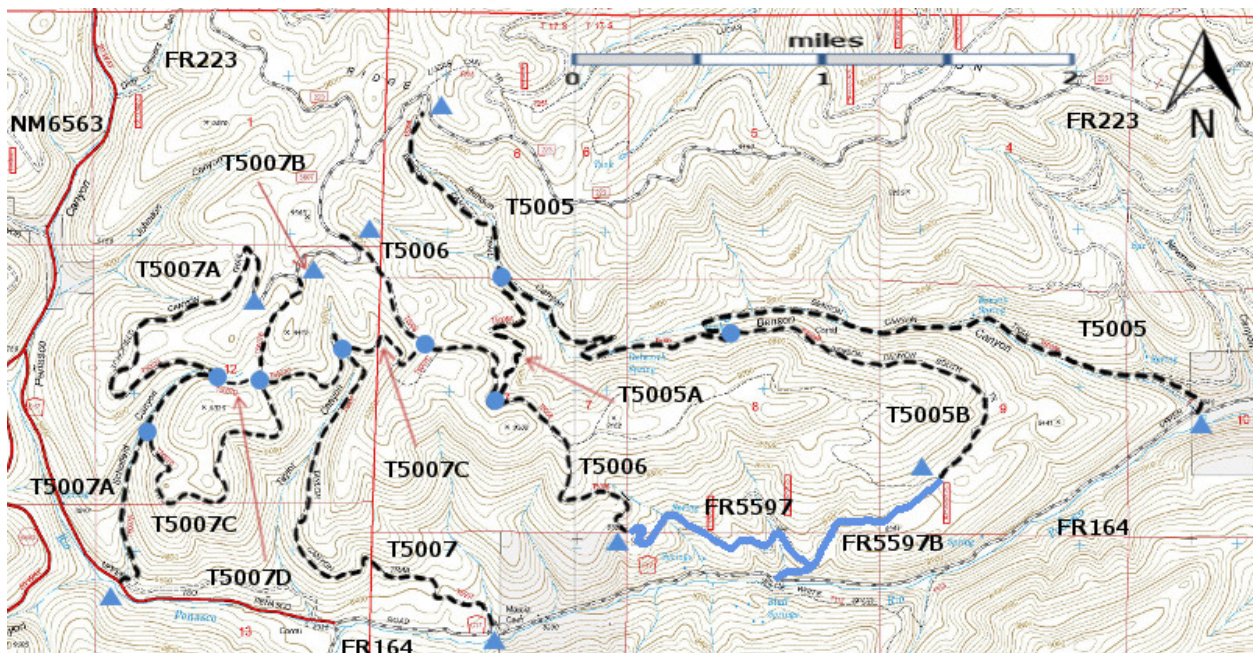
T5005

GPS Track (as .GPX)

Left click to open in your browser; then save from browser.

LENGTH	ELEVATION	DIFFICULTY	SCENERY
4.9 miles	7880 -9500 ft 1620 ft difference	Easy	3

Allowed Usage				
✓	✓	✓	✓	✓



[Link to map color/symbol codes](#)

T5005, T5005A, T5005B, T5006, T5007, T5007A, T5007B, T5007C, and T5007D are shown as black dashed lines on the map. The roads FR5597 and FR5597B are shown as solid blue lines.

NOTE: T5005 and T5005A have been significantly changed from the 2002 edition of Trail Guide: Lincoln National Forest. Check the maps carefully.

DESCRIPTION: T5005 is a canyon bottom trail for its entire distance, following abandoned, narrow roads here and there. Of all the official paths beginning from FR164, this one has the easiest grade.

Starting at its lower end, the trail passes through a treeless, fairly narrow meadow. Only at mile 0.3 from its lower end does the path begin threading through scattered groups of trees. Canyon sides are covered with mixed conifers. Hundreds of wild turkeys have been known to thrive in the canyon and may make themselves known if trail users are quiet and listen for their sounds.

To reach a concrete trough with water (*purify before using*), angle left at an obvious fork in the trail at mile 0.9 and follow the canyon bottom for 450 feet.

As you proceed up canyon along T5005, meadows begin appearing in otherwise forested hillsides. Shortly after passing the junction with T 5005B at mile 2.3, an abandoned corral and deteriorating remains of a one-room log cabin at mile 2.4 become riveting attractions in an especially scenic setting. Soon the path passes Benson Spring. T5005 intersects T5005A 1.4 miles after it intersects T5005B. Later, as the trail nears its upper end, it passes through a corridor of scattered trees amid park-like, picturesque, open spaces. Gradients reach 20% along its steepest area; average grades are under 10%. The route is generally in good condition although sometimes a little rutty. T5005 is the only trail of the three (T5005, T5005A, and T5005B) that closely parallels an intermittent stream and passes spring environments

ACCESS: To reach the upper end of T5005, begin in Cloudcroft at the US82 and NM130 intersection and drive NM130 south 1.8 miles. Turn right on NM6563, Sunspot Highway, and go 6 miles to milepost 6. Drive another 0.2 mile and turn left on FR223, Benson Ridge Road. Follow this somewhat improved road (originally a railroad logging spur) 3.7 miles to a wide U-curve going right; the trailhead is in the middle of the turn, also on the right. {For railroad buffs, look for the fragment of an old trestle at the east end of this curve.]

To reach the lower end of T5005, continue along Sunspot Highway to mile 8. Go another 0.5 mile and turn left on Rio Penasco Road (same as FR164 and County C017). Drive past the end of pavement at mile 1.9, past Bluff Springs at mile 3.7, to mile 5.7; the signed trailhead is on the left just before a cattle guard.

GPS Coordinates for Key Points

NAD83	Lat/Lon hddd mm ss.s	UTM (13 S)
Upper Trailhead	N32 51 31.6 W105 45 37.3	428858 3635886
Junction of T5005 and T5005A	N32 50 55.5 W105 45 18.4	429340 3634771
Junction of T5005 and T5005B	N32 50 42.0 W105 44 22.1	430800 3634345
Lower Trailhead	N32 50 25.3 W105 42 30.4	433699 3633813

Links to Other Resources

[Area Map](#)

[Sacramento Peak-Bluff Springs Topo Maps \(joined\)](#)

[Forest Service Resource](#)