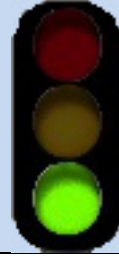


T5003

Toboggan Gulch Trail

Sacramento Ranger District








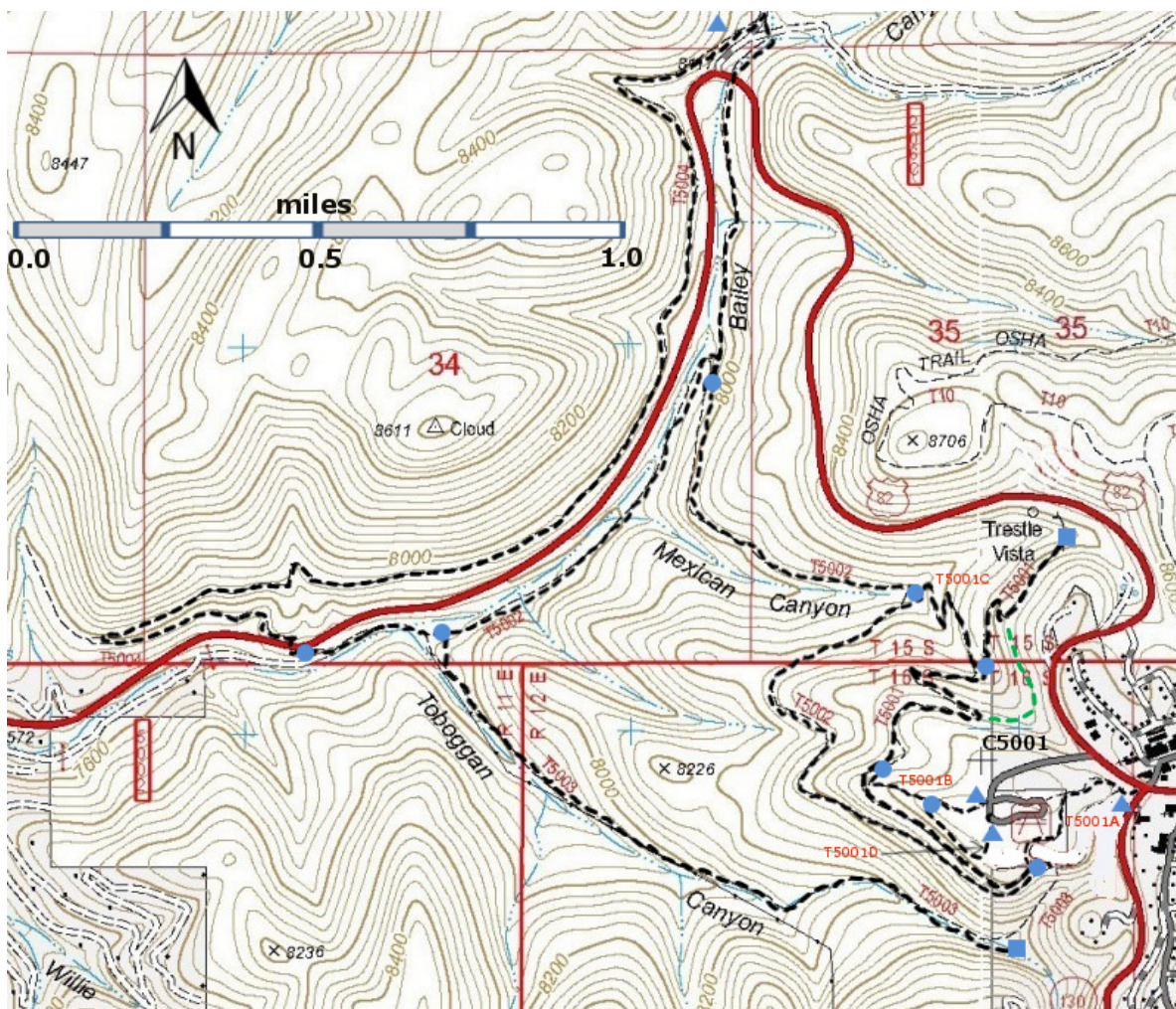
T5003

GPS Track (as .GPX)

Left click to open in your browser; then save from browser.

LENGTH	ELEVATION	DIFFICULTY	SCENERY
1.1 miles	7810 - 8390 ft 580 ft difference	More Difficult	1

Allowed Usage				
				
✓	✓	✓	✓	✓



[Link to map color/symbol codes](#)

T5001, T5001A, T5001B, T5001C, T5001D, T5002, T5003, and T5004 are shown as black dashed lines on the map.

DESCRIPTION: T5003 is a mundane trail. It follows the east side of Toboggan Canyon on an old logging road until it ends at private property, with a solid fence and a “No Trespassing sign”. The Ponderosa forest along the trail is nice but not different from the forest encountered along the way.

For history buffs, the trail does have significance. The construction of the Alamogordo and Sacramento Mountains Railroad began in June 1898, and the tracks reached the Toboggan Canyon area in November 1898. The next Spring, the railroad began carrying passengers to the Toboggan area and then taking them by stagecoach up an old road to the summit. The upper point was a tent encampment where the Pavilion is now on Curlew Street. Thus began the tourist industry in Cloudcroft, even before the railroad was constructed all the way there. The 1900 New Mexico highway map shows a road, NM24, running from La Luz to Weed, and the path of T5003 was undoubtedly part of that old road. The road has been graded and widened to make a logging road, and no trace of the old wagon road is seen.

ACCESS: T5003 is accessed from T5002. From the upper trailhead of T5002, hike 2.4 miles along T5002 until Toboggan Canyon comes in from the south. This is also the area in which the power lines go up Toboggan Canyon. The trail is well-signed.

GPS Coordinates for Key Points

NAD83	Lat/Lon hddd mm ss.s	UTM (13 S)
Trail End (Upper)	N32 57 15.0 W105 44 58.0	429952 3646455
Trailhead (Lower)	N32 57 36.5 W105 45 51.9	428558 3647127

Links to Other Resources

[Link to map of Cloudcroft Area](#)
[High Rolls Topo Map](#)
[Cloudcroft Topo Map](#)
[Forest Service Resource](#)

Last Hiked: August 19, 2010

Updated 1/17/2016