

T5001C

Crossover Trail

Sacramento Ranger District



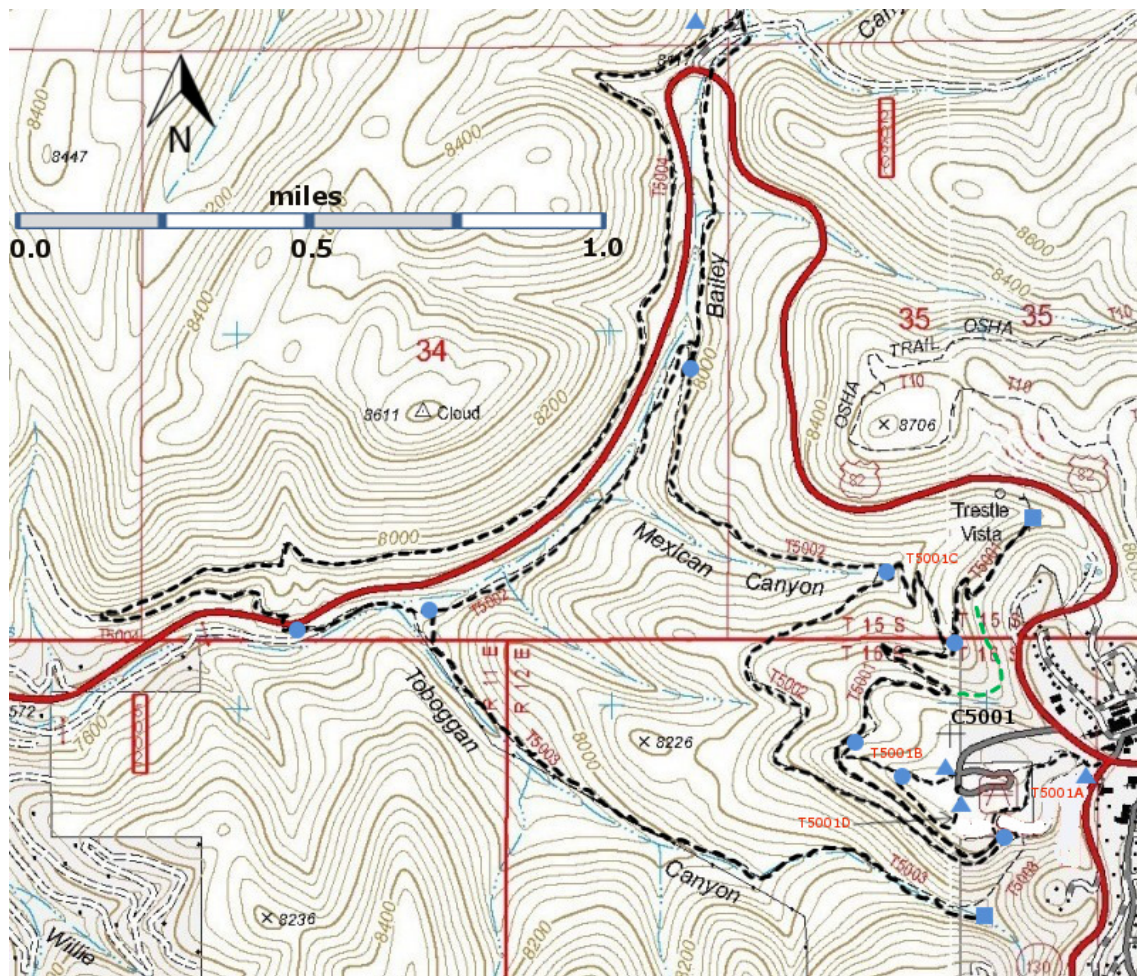
T5001C

GPS Track (as .GPX)

Left click to open in your browser; then save from browser.

LENGTH	ELEVATION	DIFFICULTY	SCENERY
0.3 miles	8140 - 8340 200 ft difference	Moderate	3

Allowed Usage				



[Link to map color/symbol codes](#)

5001, T5001A, T5001B, T5001C, T5001D, T5002, T5003, and T5004 are shown as black dashed lines on the map.

NOTE: Local members of the New Mexico Rails to Trails Association have volunteered many hours of labor to help open these trails. T5001 follows part of the original Alamogordo and Sacramento Mountains railroad that connected Alamogordo and Cloudcroft.

DESCRIPTION: The Trestle Recreation Area was opened to the public in 1995 and contains trails and a picnic area. In 1994, a replica of the exterior of Cloudcroft's first railroad depot was built here; the site of the original depot was 100 yards down NM130 from the intersection of NM130 and US82.

Except for an absence of distant views, the T5001C is little different from the portion of T5001 that passes through the forest away from the railroad grade. After three switchbacks, the easy route ends on T 5002, near a shallow drainage..

ACCESS: T5001C connects T5001 with T5002 and makes possible a loop walk of 2.8 miles (maximum) involving these three trails plus either or both T5001A and T5001B. To reach the upper T5001C terminus, begin at the replica and follow T5001B to T5001. Turn right and hike T5001 0.5 mile to the signed T5001C junction at T5001's lowest point. See the write-up for T5002 to access the lower end of T5001C.

GPS Coordinates for Key Points

NAD83	Lat/Lon hddd mm ss.s	UTM (13 S)
Junction of T5001 and T5001C	N32 57 37.3 W105 45 00.4	429895 3647142
Junction of T5001C and T5002	N32 57 43.9 W105 45 06.3	429745 3647346

Links to Other Resources

[Link to map of Cloudcroft Area](#)
[High Rolls Topo Map](#)
[Cloudcroft Topo Map](#)
[Forest Service Resource](#)

Last Hiked: 7/3/2014

Updated 1/17/2016