

T5001B Overlook Trail

Sacramento Ranger District



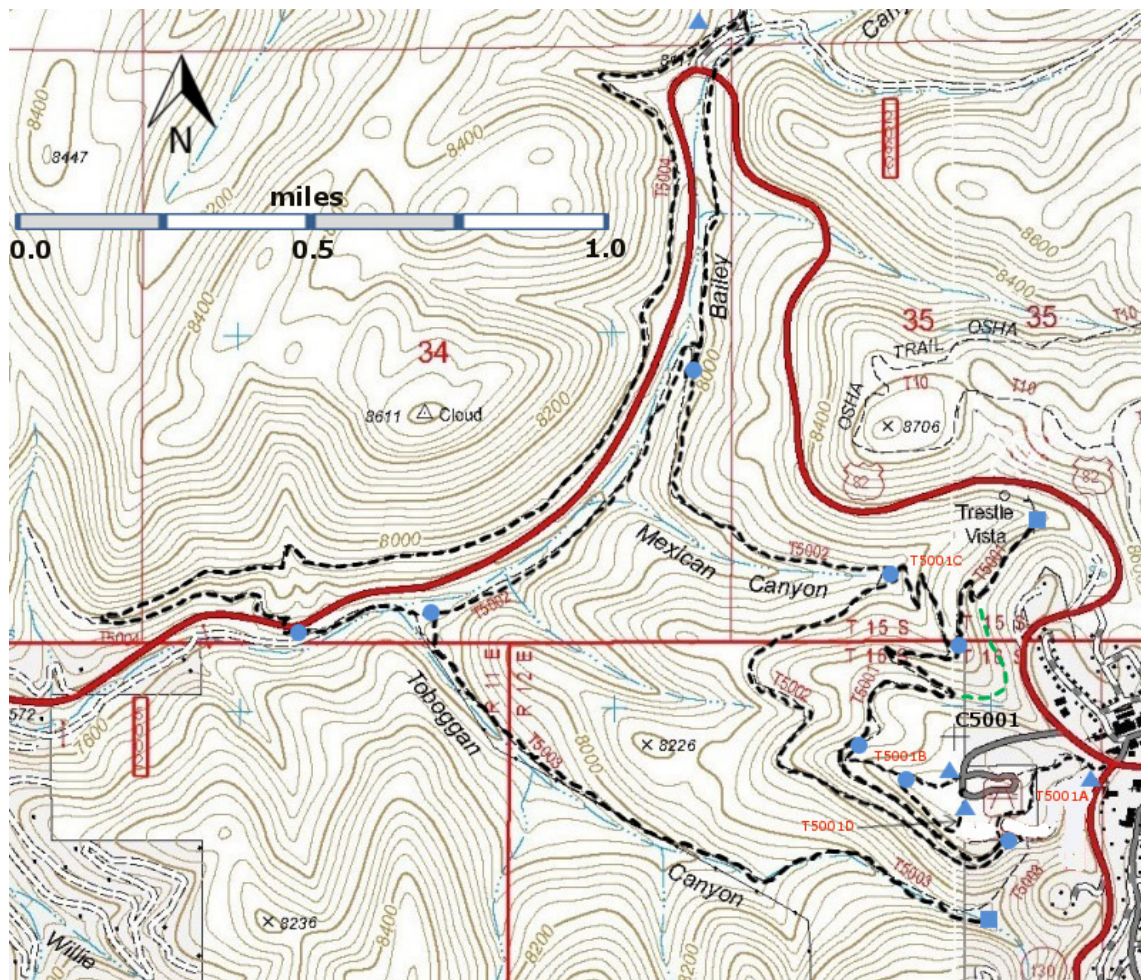
T5001B

GPS Track(as .GPX)

Left click to open in your browser; then save from browser.

LENGTH	ELEVATION	DIFFICULTY	SCENERY
0.3 miles See Text	8540-8670 ft 130 ft difference	Moderate	3

Allowed Usage				



[Link to map color/symbol codes](#)

5001, T5001A, T5001B, T5001C, T5001D, T5002, T5003, and T5004 are shown as black dashed lines on the map.

NOTE: Local members of the New Mexico Railsto Trails Association have volunteered many hours of labor to help open these trails. T5001 follows part of the original Alamogordo and Sacramento Mountains railroad that connected Alamogordo and Cloudcroft.

DESCRIPTION: The Trestle Recreation Area was opened to the public in 1995 and contains trails and a picnic area. In 1994, a replica of the exterior of Cloudcroft's first railroad depot was built here; the site of the original depot was 100 yards down NM130 from the intersection of NM130 and US82. A volunteer may be on duty during the summer.

T5001B connects the replica Railroad Depot and picnic area to T5001, near the ruins of the S-Trestle. It also provides access to to overlook just above the Devil's Elbow railbed cut. From the overlook one can see High Rolls, the Tularosa Basin, and the distant San Andres Mountains. If one looks carefully, it is possible to see the upper portion of T5004 Switchback trail on the south-facing slope of a long hill.

ACCESS: To reach the T5001B trailhead and the picnic area, open during summer, start from the intersection of NM130 and US82 and proceed a few hundred feet west along US82 to the first paved road on the left. Turn and drive to the parking and picnic areas at the railroad depot replica. T5001B starts at the map kiosk.

GPS Coordinates for Key Points

NAD83	Lat/Lon hddd mm ss.s	UTM (13 S)
Trailhead	N32 57 26.6 W105 44 58.6	429939 3646812
Junction of T5001 and T5001B	N32 57 29.6 W105 45 09.6	429656 3646905

Links to Other Resources

[Link to map of Cloudcroft Area](#)
[High Rolls Topo Map](#)
[Cloudcroft Topo Map](#)
[Forest Service Resource](#)

Last Hiked: July 20, 2012

Updated 1/17/2016