

T5001A

Village Spur Trail

Sacramento Ranger District



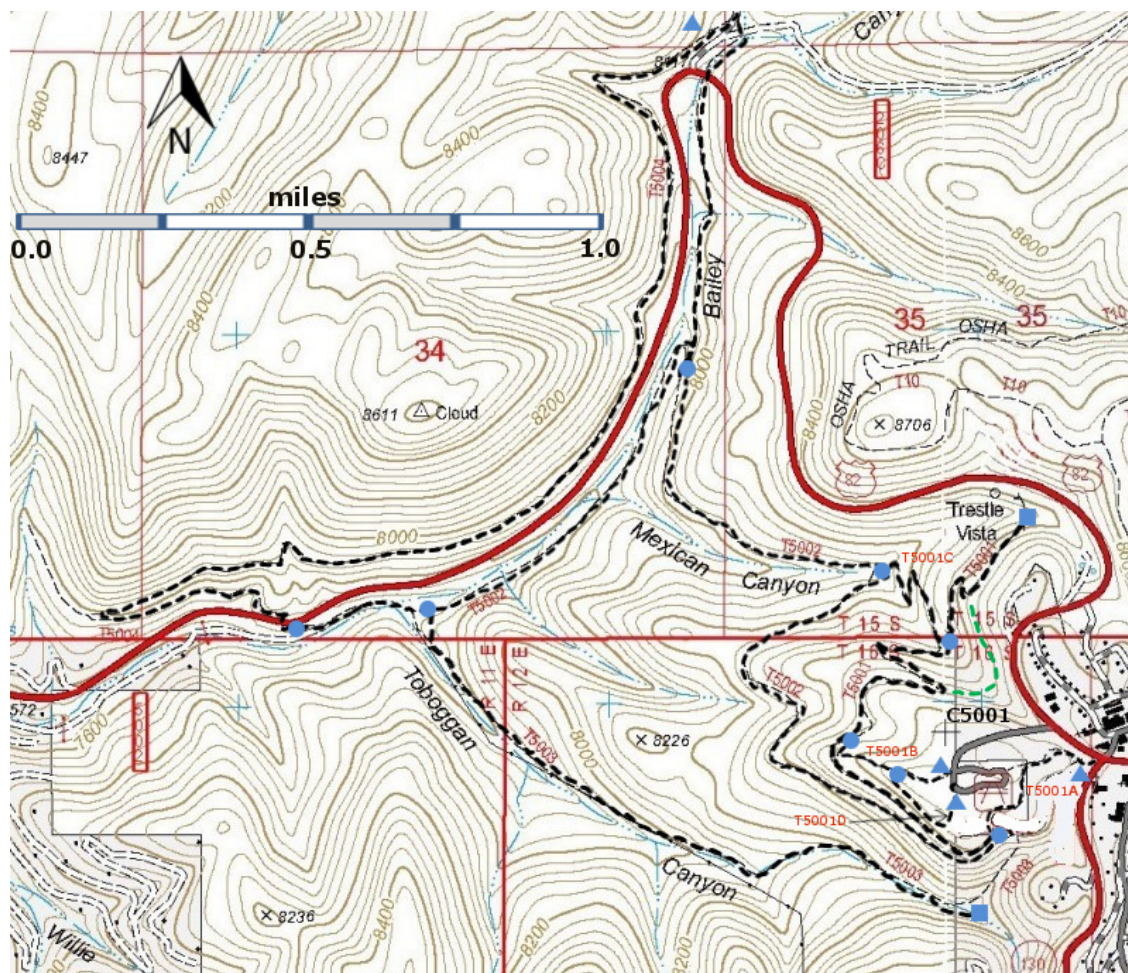
T5001A

GPS Track (as .GPX)

Left click to open in your browser; then save from browser.

LENGTH	ELEVATION	DIFFICULTY	SCENERY
0.3 miles	8630 - 8660 ft 30 ft difference	Easy	2

Allowed Usage				
✓	✓	✓	✓	✓



[Link to map color/symbol codes](#)

5001, T5001A, T5001B, T5001C, T5001D, T5002, T5003, and T5004 are shown as black dashed lines on the map.

NOTE: Local members of the New Mexico Rails to Trails Association have volunteered many hours of labor to help open these trails. T5001 follows part of the original Alamogordo and Sacramento Mountains railroad that connected Alamogordo and Cloudcroft.

DESCRIPTION: The Trestle Recreation Area was opened to the public in 1995 and contains trails and a picnic area. In 1994, a replica of the exterior of Cloudcroft's first railroad depot was built here; the site of the original depot was 100 yards down NM130 from the intersection of NM130 and US82. A volunteer may be on duty during the summer.

T5001A provides access to the upper trailheads for T5001 Cloud-Climbing Trestle Trail and T5002 Old Cloudcroft Highway Trail, and since one may easily leave T5001A and cross the Trestle Area picnic area, it also provides access to the replica of the Railroad Depot and to the trails accessed from that area.

ACCESS: In Cloudcroft from the intersection of NM130 and US82, go 150 feet west along US82 and turn left into a small parking area. T5001A begins here and ends in 0.3 mile at a tee where T5001 starts, going right; and T5002 begins, going left.

DISTANCES AND ALTITUDES: T5001A, 1.3 miles long, ascends 30 feet as it crosses the hill and then descends 60 feet to the upper trailhead for T5001.

GPS Coordinates for Key Points

NAD83	Lat/Lon hddd mm ss.s	UTM (13 S)
Trailhead	N32 57 27.8 W105 44 45.5	430280 3646846
Junction of T5001 and T5001A	N32 57 21.2 W105 44 55.2	430027 3646644

Links to Other Resources

[Link to map of Cloudcroft Area](#)
[High Rolls Topo Map](#)
[Cloudcroft Topo Map](#)
[Forest Service Resource](#)

Last Hiked: July 20, 2012

Updated 1/17/2016