

T433

Wayland Canyon Trail

Sacramento Ranger District

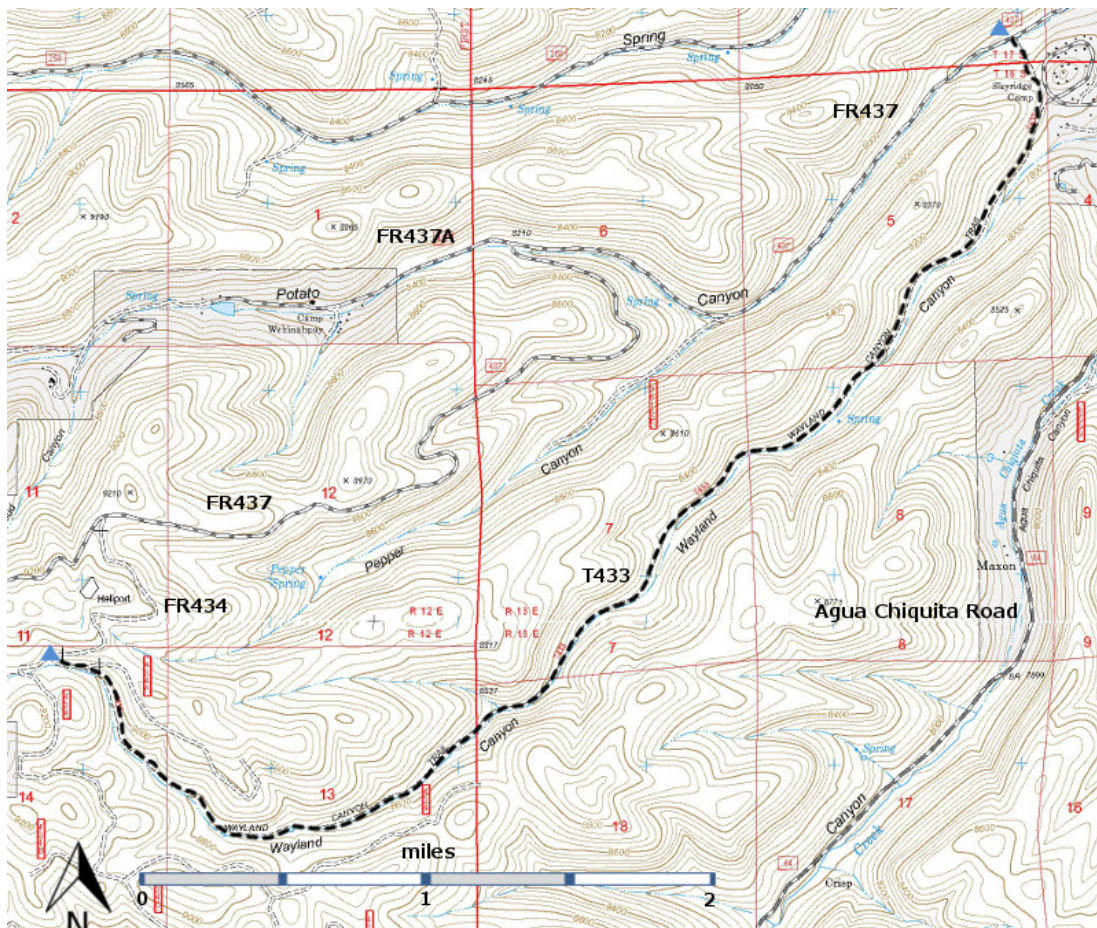


T433
GPS Track (as .GPX)

Left click to open in your browser; then save from browser.

LENGTH	ELEVATION	DIFFICULTY	SCENERY
5.0 miles	7720 - 9080 ft 1360 ft difference	Moderate	2

Allowed Usage				



[Link to map color/symbol codes](#)

Last Hiked: 2005, 6/19/2014 (lower end)

Updated 1/17/2016

T433 is shown as a black dashed line on the map.

DESCRIPTION: At the upper end of T 433 is an attractive camping location. The trail descends through a lovely dale. Several small earthen dams were constructed in 2001 to prevent stream erosion as a result of the fire.

Moderate grades are the rule for the whole length of the route, part of which is a narrow old road. The main part of the canyon is an open bottom with scattered trees and heavily forested hillsides amid meadows extending into side canyons. Two spring areas, about one mile apart, are midway along the hiking route. The entire canyon is a mixture of burned and unburned areas resulting from the Scott Able Fire of 2000. A severely burned area is restricted to the lower end of the canyon.

The area between the lower trailhead and the ridge immediately to the south is littered with trees downed as a result of a fire. Find the trail by looking for guide logs along the trail and places where fallen logs have been cut with a chainsaw to allow passage. In ascending from the lower trailhead, work toward the saddle at the top. Do not cross through the gated fence onto private property, but rather bend south-west along a well-defined old road, now T433. In descending toward the lower trailhead, remember not to cross the gated fence.

ACCESS: Begin in Cloudcroft at the intersection of US82 and New Mexico NM130, and follow NM130 south 16 miles to milepost 16. Drive 0.7 mile beyond the milepost and turn right on NM24. Follow this paved highway to just before milepost 5. Turn right and follow paved Agua Chiquita Road (same as NM 521 and FR64) 7.8 miles, to its junction with Potato Canyon Road (same as FR437 and County Road D014). *Zero your trip odometer.* Turn right on Potato Canyon Road.

Lower Trailhead: Drive to mile 0.5. Park in a safe area near the only creek crossing on the left that is relatively easy to cross. The lower trailhead is at a gate in the fence across the dry creek bed from the road. Look for the gate posts made of 3" diameter iron pipe.

Upper Trailhead: Do not re-zero your odometer. Proceed up canyon along the maintained graveled road to mile 2.6 at an important junction; FR 437 is the left fork and FR437A is the right fork. Make a hard turn to the left to begin an easy ascent along the mountainside. FR437 passes unburned to severely burned portions of the Scott Able Fire of 2000. Continue to mile 5.5 and turn left on signed FR434, which is narrow and unmaintained. In the wet season four wheel drive will be needed. Proceed to mile 6.3, where the road curves left toward a FS gate. The upper end of T433 Wayland Canyon Trail, an attractive spot for primitive camping, is on the left.

GPS Coordinates for Key Points

NAD83	Lat/Lon hddd mm ss.s	UTM (13 S)
Trailhead (East)	N32 46 41.2 W105 37 48.6	440986 3626864
Trailhead (West)	N32 44 53.9 W105 41 05.5	435842 3623591

Links to Other Resources

[Area Map](#)

[Bluff Springs Topo Map](#)

[Graveyard Canyon Topo Map](#)