

T251

Lucas Canyon Trail

Sacramento Ranger District

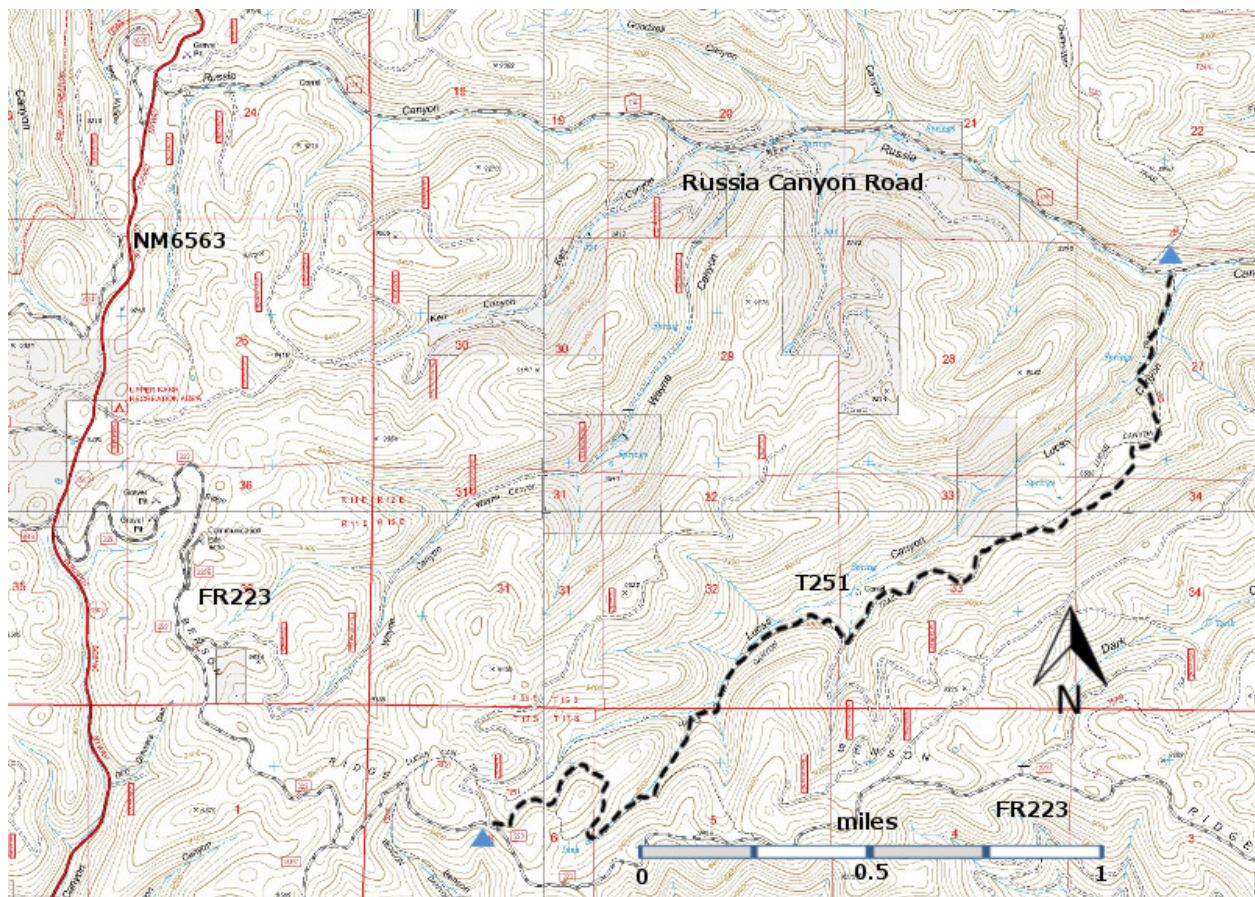


[T251](#)
GPS Track (as .GPX)

Left click to open in your browser; then save from browser.

LENGTH	ELEVATION	DIFFICULTY	SCENERY
5.1 miles	8080 - 9420 ft 1340 ft difference	Moderate	4

Allowed Usage				
✓	✓	✓	✓	✓



[Link to map color/symbol codes](#)

T251 is shown as a black dashed line on the map.

NOTE: Since 2010, T251 has been rerouted. The upper (South) trailhead is now 0.5 miles further east along FR223.

DESCRIPTION: From the upper end of T 251, the trail descends only a little for the first 0.5 miles. It then descends into the canyon and follows old timber roadsthrough forested areas. The last 0.3 mile is in open country as it passes through the lower end of Lucas Canyon.

The route features a variety of landscapes including several meadows and former timber roads, not part of this trail, that invite further exploration. *The old roads are all unnumbered so be careful not to get lost.* Along the official trail is timber of varying sizes including much Douglas-fir and aspen. There are many intermediate views within the canyon, but distant views are few. Maximum average gradient is estimated at 20%, with most of the route much less.

ACCESS: To reach the upper trailhead, begin in Cloudcroft at the US82 and NM130 intersection; drive NM130 south 1.8 miles. Turn right on NM6563, Sunspot Highway, and go to milepost 6. Drive another 0.2 mile; turn left on FR223, Benson Ridge Road. Follow the improved route 4.2 to an open area. The trailhead is signed.

To reach the lower T251 trailhead, begin in Cloudcroft at the US82 and NM130 intersection. Drive NM130 south to milepost 7. Go another 0.5 mile; turn right on Russia Canyon Road (same as County Road C004 and FR247). Follow Russia Canyon Road 1.6 miles; the trailhead is on the left, just across the road from the lower T250 trailhead.

GPS Coordinates for Key Points

NAD83	Lat/Lon hddd mm ss.s	UTM (13 S)
Upper Trailhead	N32 51 21.7 W105 45 12.9	429488 3635579
Lower Trailhead	N32 53 22.4 W105 42 17.3	434078 3639264

Links to Other Resources

[Area Map](#)

[Sacramento Peak Topo Map](#)

[Bluff Springs Topo Map](#)

[Cloudcroft Topo Map](#)

Last Hiked: May 6, 2014

Updated 1/17/2016