

T247E

Chippeway Spur Trail

Sacramento Ranger District



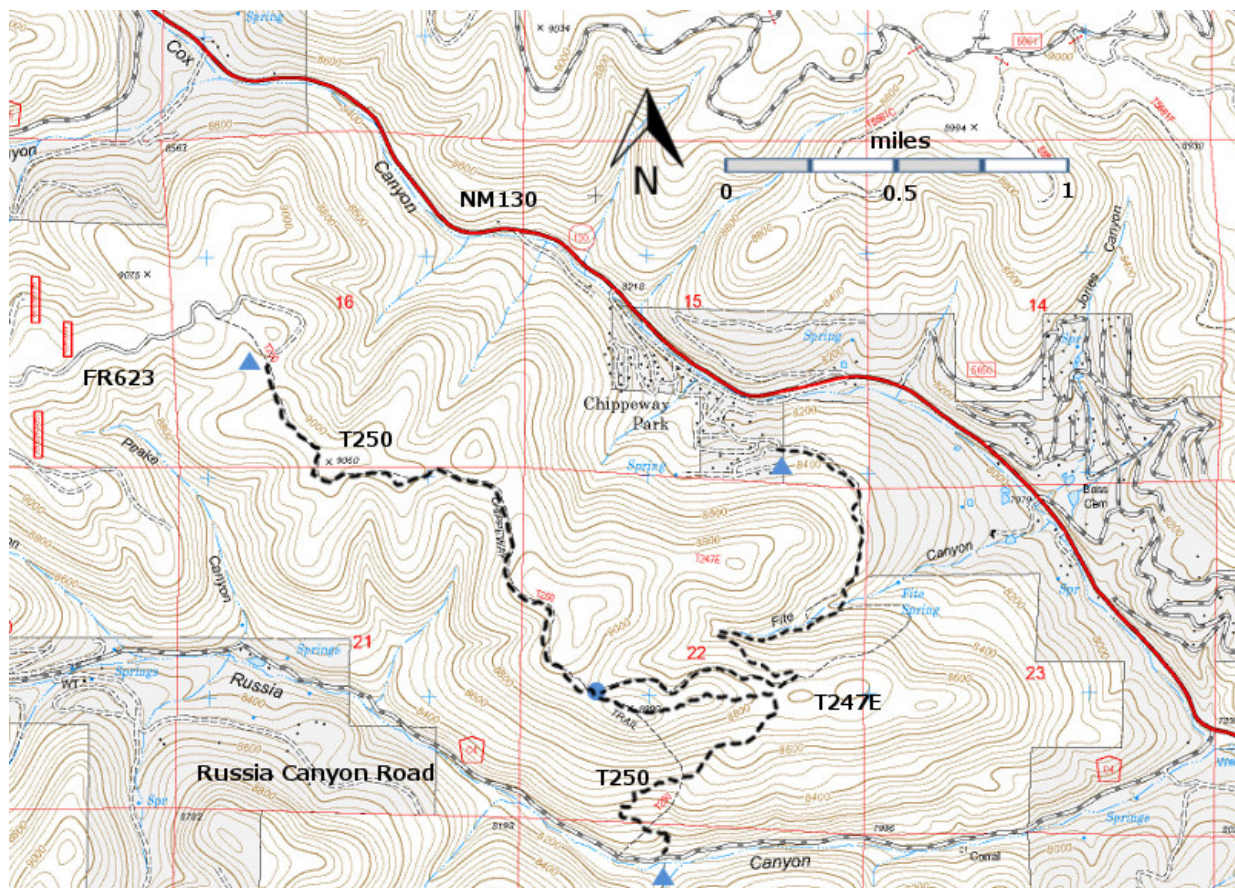
T247E

GPS Track (as .GPX)

Left click to open in your browser; then save from browser.

LENGTH	ELEVATION	DIFFICULTY	SCENERY
2.1 miles	8320 - 8940 ft 620 ft difference	Moderate	3

Allowed Usage				
✓	✓	✓	✓	✗



[Link to map color/symbol codes](#)

T247E and T250 are shown as black dashed lines on the map.

DESCRIPTION: T247E follows old timber roads that are partially to completely grassed-over. The meandering trail gradually progresses to its upper end near the ridge. Vistas are varied and interesting, across frequent small meadows and canyons. From its lower terminus, the impressive landscape consists of scattered trees on a beautiful hillside.

ACCESS: To reach the lower trailhead for T247E, begin in Cloudcroft at the NM130 and US82 intersection and drive NM130 south 5 miles to milepost 5. Go another 0.2 mile and turn right on signed Valley Road. *Zero your trip odometer here.* In just a few yards take the left fork, also signed Valley Road. Continue past Upper Cox Canyon Volunteer Fire Department on the left. At mile 0.4 turn right on signed Deer Drive and drive uphill to mile 0.5; turn left on signed Ridge Road. Follow this good graveled road to mile 0.7 as its grade increases. Stop at a U-curve going right; the signed trailhead is straight ahead at the middle of the curve, through the iron pipe gate structure. Limited parking for two or three vehicles exists on the road shoulder.

The upper end of T247E tees into T 250 at 1.7 miles from the upper T250 trailhead and 1.5 miles from the lower T250 trailhead along Russia Canyon Road.

GPS Coordinates for Key Points

NAD83	Lat/Lon hddd mm ss.s	UTM (13 S)
Trailhead	N32 54 23.7 W105 41 57.9	434593 3641148
Junction of T247E and T250	N32 53 46.7 W105 42 29.8	433757 3640013

Links to Other Resources

[Area Map](#)

[Cloudcroft Topo Map](#)

Last Hiked: 4/13/2014

Updated 1/17/2016