

# T239A

## Little Lewis Canyon Trail

### Sacramento Ranger District



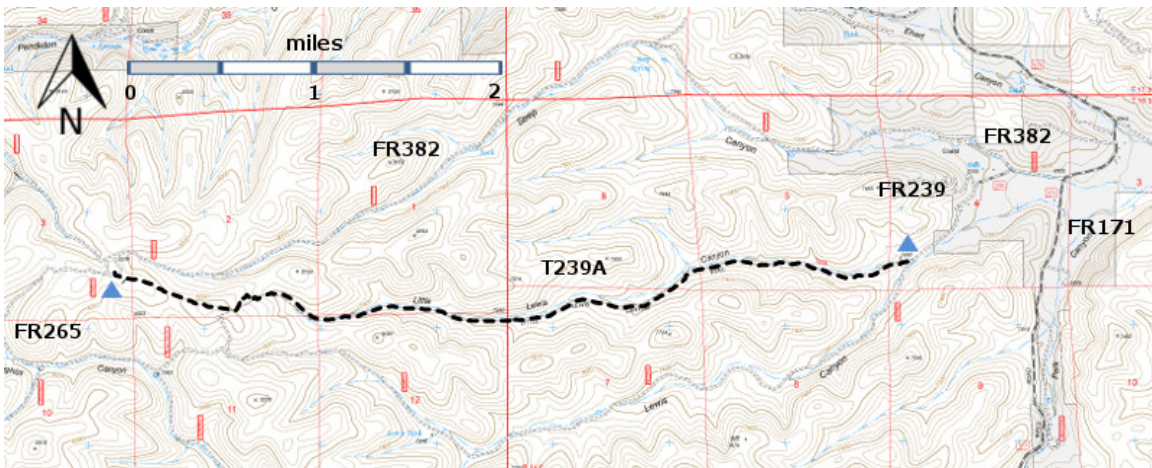
### T239A

GPS Track (as .GPX)

Left click to open in your browser; then save from browser.

LENGTH	ELEVATION	DIFFICULTY	SCENERY
4.7 miles	7060 - 8280 ft 1220 ft difference	Moderate	2

Allowed Usage				
✓	✓	✓	✓	✗



[Link to map color/symbol codes](#)

T239A is shown as a black dashed line on the map.

**NOTE:** The western end of T239A is shown incorrectly on the 2012 Forest Service map.

**DESCRIPTION:** The Scott Able Fire burned much of this area in the spring of 2000. In general, it was an understory blaze along the lower canyon portion of T239A. Heavily burned areas where the fire crowned are observed at mile 2.3 beyond the lower trailhead. Interestingly, it appears that in the hot areas, oak survived better than Ponderosa pine. The recovery process of

this land will be interesting to observe for decades to come. Along the upper portion of the route, burned dead trees that fall across the trail will be an ongoing problem.

For the first 3.6 miles, the trail ascends gently through a fairly narrow canyon. In the last mile, the trail becomes steeper and rockier. Average grade along the path averages 7%, 25% being maximum. At least 20 species of wildflowers were seen in season.

**ACCESS:** To reach T239A, begin in Cloudcroft at the US82 and NM130 intersection and drive NM130 south 16 miles to milepost 16. Go 0.7 mile beyond the milepost, and turn right on NM24. Drive 5 miles to just ahead of milepost 5 and turn right on Agua Chiquita Road (same as NM521 and FR64). Drive 0.5 mile to Perk Canyon Road and village of Weed turnoff on the left. *Zero your trip odometer here.* Turn left and follow for 3.0 miles the well maintained, graveled Perk Canyon Road, same as FR171. Turn right on signed Seep Canyon Road (same as FR382). Drive 0.3 mile on FR382 and turn left on unsigned and narrow FR239, Little Lewis Canyon Road. A light green telephone box on the left identifies this junction.

Enter private property at mile 3.6, where it may be necessary to open/close a gate. (If locked, report it to a ranger district office, because the public has legal access through this property). The road may be obscure as it winds among buildings to mile 4.0 where public land is reentered. At mile 4.1 is the signed trail junction on the right for T239A.

To reach the upper trailhead, *zero your trip odometer* at the intersection of FR382 and FR171 (mentioned above). Follow FR 171 south to mile 6.0, the turnoff for FR265 on the right (not signed at this junction). Follow FR265, an especially scenic road, to mile 9.0 marking the signed T239A upper trailhead on the right, at a curve going left. If the trailhead is missed, in less than 0.1 mile, FR265 turns left at the upper end of FR382. In wet weather, a 4WD vehicle will be needed because of the mud along FR265.

#### GPS Coordinates for Key Points

	Lat/Lon hddd mm ss.s	UTM (13 S)
Trailhead (West)	N32 45 56.4 W105 35 46.1	444164 3625467
Trailhead (East)	N32 46 00.7 W105 31 20.4	451077 3625564

#### Links to Other Resources

[Little Lewis Canyon Area Map](#)  
[Sacramento Topo Map](#)

Last Hiked: November 20, 2013

Updated 1/17/2016