

T236

Gobbler Knob Trail

Sacramento Ranger District



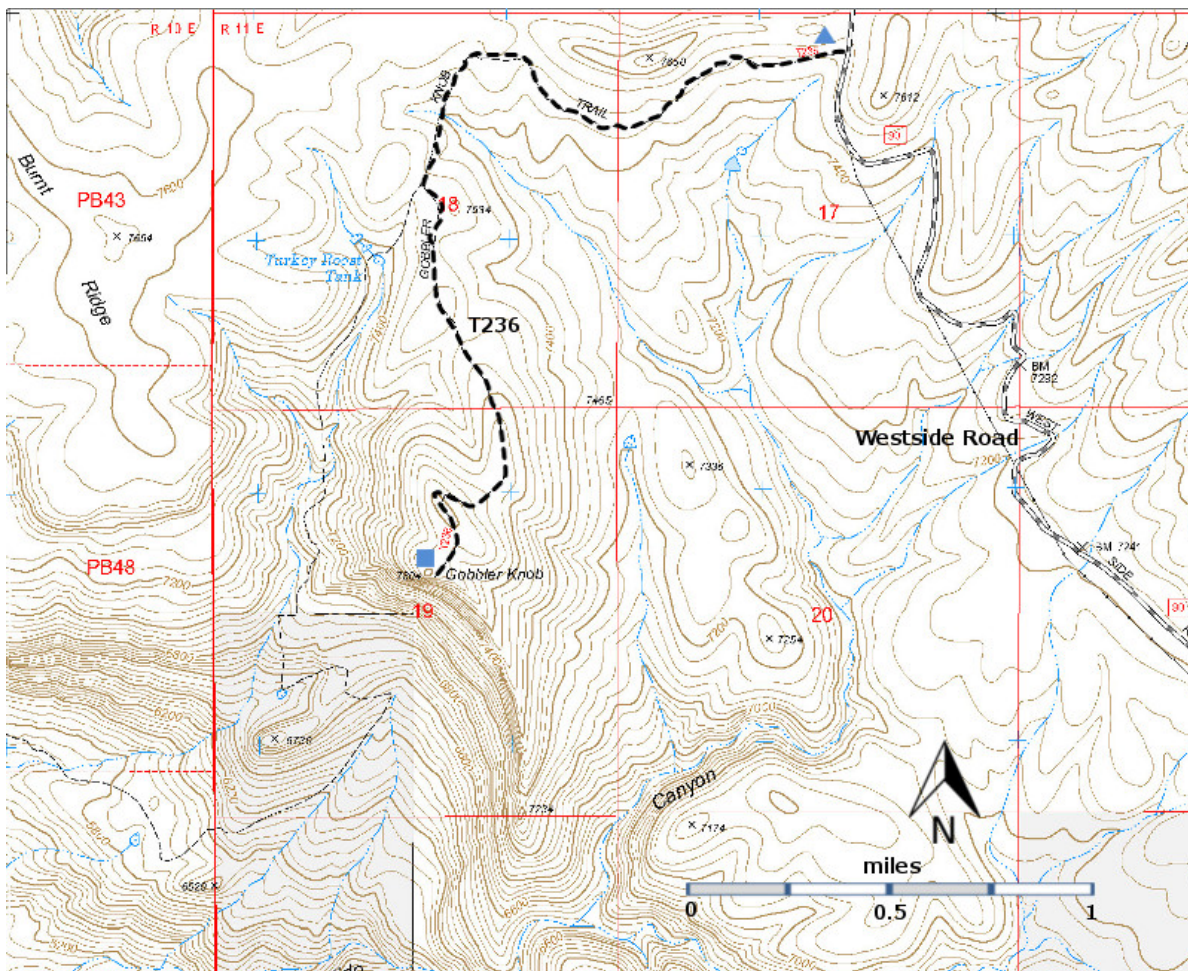
T236

GPS Track(as .GPX)

Left click to open in your browser; then save from browser.

LENGTH	ELEVATION	DIFFICULTY	SCENERY
2.7 miles	7440 -7800 ft 360 ft difference	More Difficult	4

Allowed Usage				



[Link to map color/symbol codes](#)

T236 is shown as a black dashed line on the map.

DESCRIPTION: Beginning at the trailhead, the route passes through Piñon-Juniper Woodland, mixed with scrub oak. There are occasional cairns and carsonite signs along the way. Views begin after mile 2.0 from the trailhead. Evidence of the path ends at mile 2.6, at an old heliport on an abandoned military site. From here, it is 0.2 mile west, across an impressive meadow, to a long ridge known as Gobbler Knob.

From the high point with its 360-degree panorama, enjoy some of the finest views in Lincoln National Forest! The view overlooks a horseshoe of eroded features resembling Bryce Canyon in Utah. Beyond are distant views of the White Sands, Tularosa Basin, and surrounding mountains. Best seen from here are the deep, scenic canyons extending from the ridge of the Sacramento Mountains to the northeast.

ACCESS: In High Rolls, from the junction of US82 and Westside Road (same as FR 90 and County A061), drive Westside Road for 21.4 miles south to where the road crosses a small ridge. Stop on the ridge and park off the road in a small clearing on the right; then walk 370 feet further south. The trail is signed on the right as T236. *Caution: When Westside Road is muddy, it is very muddy and slick.*

GPS Coordinates for Key Points

NAD83	Lat/Lon hddd mm ss.s	UTM (13 S)
Trailhead	N32 44 55.1 W105 50 22.6	421344 3623735
Trail End	N32 43 47.5 W105 51 25.3	419697 3621664

Links to Other Resources

[Area Map](#)

[Bug Scuffle Canyon Topo Map](#)

Last Hiked: 2020

Updated 2/4/2021