

T234 Road Canyon Trail

Sacramento Ranger District



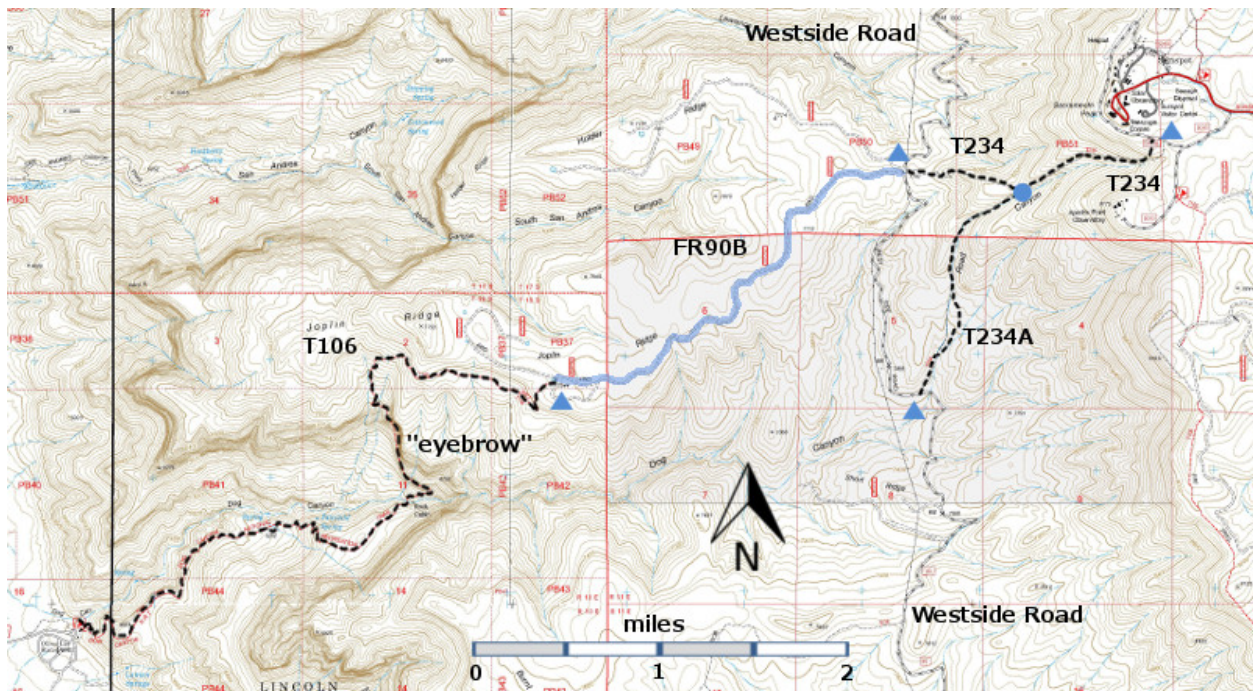
T234

GPS Track (as .GPX)

Left click to open in your browser; then save from browser.

LENGTH	ELEVATION	DIFFICULTY	SCENERY
1.6 miles	7740 - 9080 ft 1340 ft difference	Moderate	2

Allowed Usage				



[Link to map color/symbol codes](#)

T106, T234, and T234A are shown as black dashed lines on the map. The road connecting T234 and T106, FR90B, is shown as a solid blue line.

DESCRIPTION: The upper end of the trail begins in an attractive, shaded, open grassy area where it begins the descent into Road Canyon, following a constructed route along the side of the canyon. At mile 0.9, T234 angles to the right at its junction with T234A, and follows a forested ridge to mile 1.3. The path then descends along the side of a hill. It is so protected here that snow may accumulate during winter

months, making the pathway difficult or impossible to traverse. The trail levels out for its last 0.3 mile to the edge of Westside Road. Grades frequently range around 25% with maximum being 35%.

ACCESS: To reach T234, begin in Cloudcroft at the intersection of US82 and NM130. Drive NM130 south 1.8 miles and turn right on NM6563, Sunspot Highway. Follow NM6563 for 14 miles. Drive another 0.2 mile to the Sunspot Road junction. Turn right and go 0.2 mile to the signed Apache Point Road on the left. Turn and follow the pavement 0.3 mile. Look for the T105B trailhead sign on the right and the nearby "To T 234" carsonite sign. Follow T105B for 0.1 mile to the signed T234 trailhead on the left at the bottom of a short hill.

To reach the lower T234 trailhead (just across Westside Road from the FR 90B intersection), drive 11.7 miles along Westside Road from Sacramento Canyon Road. The lower T234 trailhead is also 18.0 miles from the beginning of Westside Road at US82 in High Rolls.

GPS Coordinates for Key Points

NAD83	Lat/Lon hddd mm ss.s	UTM (13 S)
Upper Trailhead	N32 47 07.6 W105 48 57.1	423600 3627797
Junction of T234 and T234A	N32 46 53.9 W105 49 44.9	422355 3627385
Lower Trailhead	N32 46 59.1 W105 50 22.6	421373 3627552

Links to Other Resources

[Area Map](#)

[Deadmans Canyon Topo Map](#)

[Alamogordo South Topo Map](#)

[Sacramento Peak Topo Map](#)

Last Hiked: August 24, 2014

Updated 1/17/2016