

T234A

Road Canyon Alternate Trail

Sacramento Ranger District

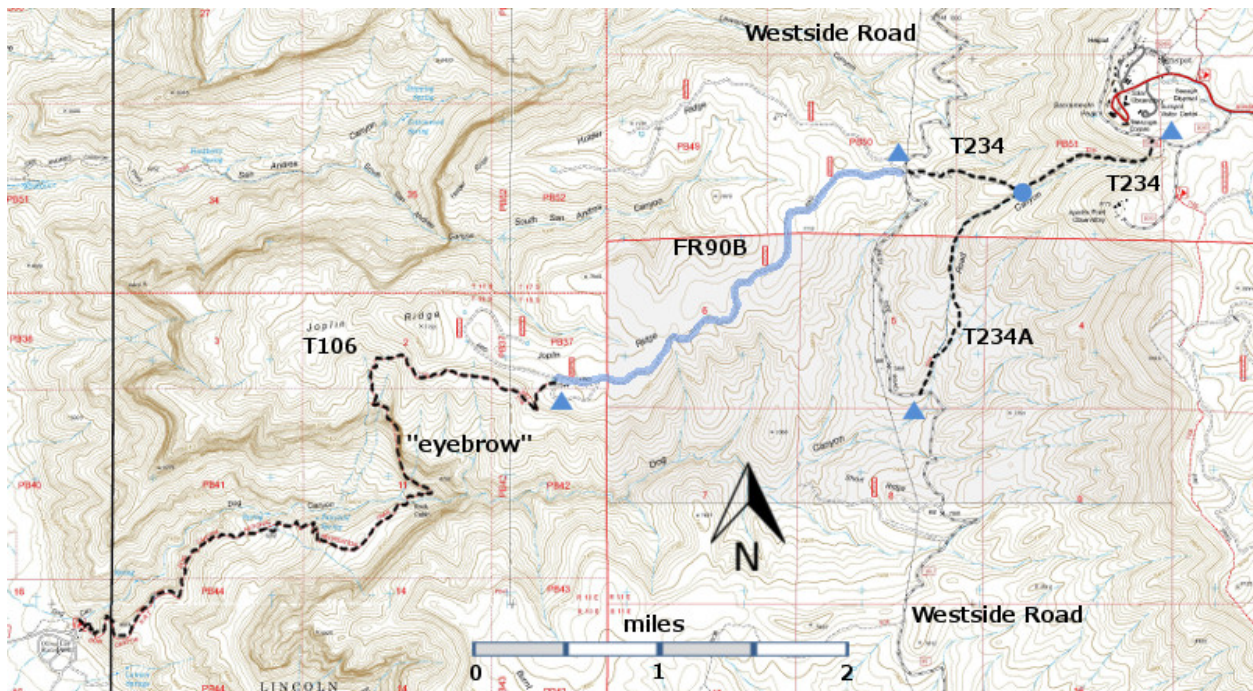


T234A
GPS Track (as .GPX)

Left click to open in your browser; then save from browser.

LENGTH	ELEVATION	DIFFICULTY	SCENERY
1.4 miles	7420 - 8100 ft 680 ft difference	Moderate	2

Allowed Usage				



[Link to map color/symbol codes](#)

T106, T234, and T234A are shown as black dashed lines on the map. The road connecting T234 and T106, FR90B, is shown as a solid blue line.

DESCRIPTION: T234A is easy to follow and provides considerable variety in vegetation. Several large specimens of alligator juniper, Douglas-fir, Ponderosa pine, New Mexico locust, and oak are present. Maximum gradient is 25%, but grades are usually much less. The lower 1.1 mile of the path follows an old road in the canyon bottom with little elevation change. Just 0.2 mile up the trail from its lower end is

a photogenic stream, up to 30 feet wide, and flowing in shallow streamlets across vegetation-covered calcite deposits.

ACCESS: To reach T234A, begin in Cloudcroft at the intersection of US82 and NM130. Drive NM130 south 1.8 miles and turn right on NM6563, Sunspot Highway. Follow the pavement 14. Drive another 0.2 mile to the Sunspot Road junction. Turn right and go 0.2 mile to the signed Apache Point Road on the left. Turn and follow the pavement 0.3 mile. Look for the T105B trailhead sign on the right and the nearby “To T 234” carsonite sign. Follow T105B for 0.1 mile to the signed T234 trailhead at the bottom of a short hill. Follow T234 for 0.9 miles to the upper T234A trailhead.

The lower T234A trailhead is reached by returning to the Sunspot intersection with Sunspot Highway. Turn right on Sacramento Canyon Road (same as County C002 and FR537) Drive Sacramento Canyon Road for 6.4 miles to its junction with Westside Road (same as FR90) and County D003). Follow Westside Road 10.0 miles to the trailhead for T234A on the right, immediately past a curve. The lower end of this trail can also be reached by driving 19.7 miles from the beginning of Westside Road US82 in High Rolls.

GPS Coordinates for Key Points

NAD83	Lat/Lon hddd mm ss.s	UTM (13 S)
Junction of T234 and T234A	N32 46 53.9 W105 49 44.9	422355 3627385
Lower Trailhead	N32 45 57.9 W105 50 17.5	421493 3625665

Links to Other Resources

[Area Map](#)

[Deadmans Canyon Topo Map](#)

[Alamogordo South Topo Map](#)

[Sacramento Peak Topo Map](#)

Last hiked: August 24, 2014

Updated 1/17/2016