

# T233

## La Pasada Encantada (The Enchanted Path)

Sacramento Ranger District



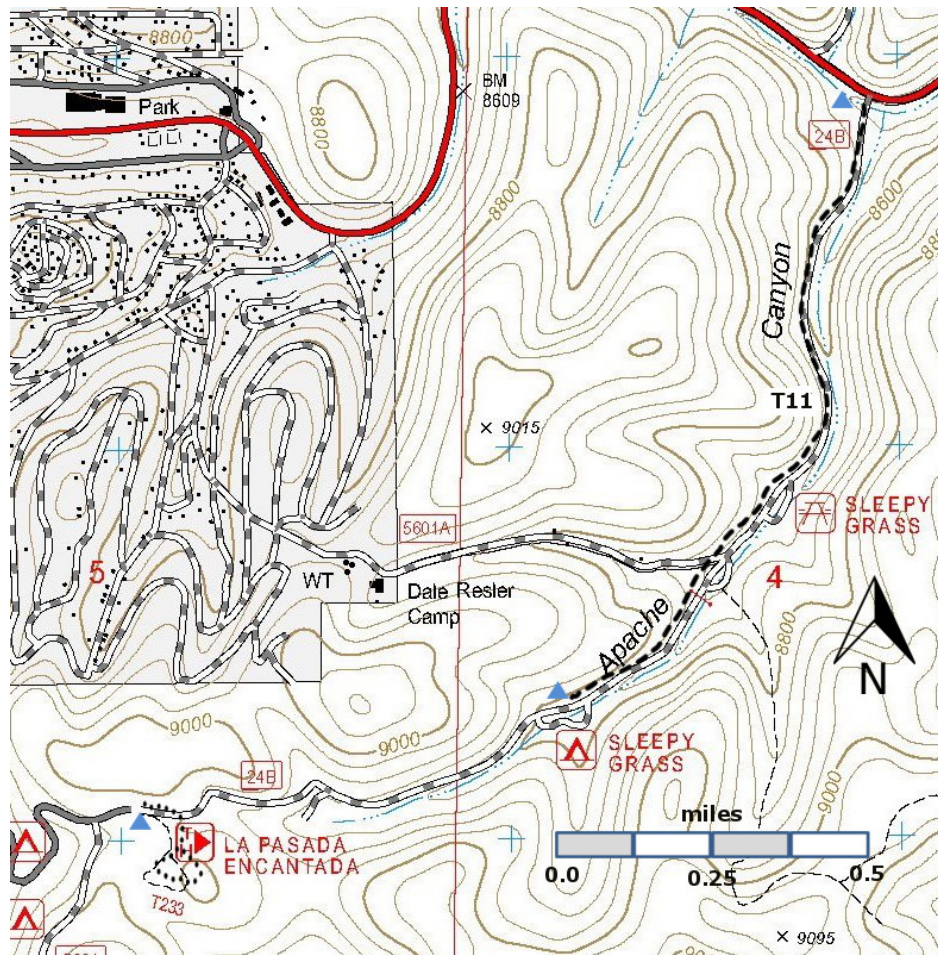
**T233**

GPS Track (as .GPX)

Left click to open in your  
browser; then save from  
browser.

LENGTH	ELEVATION	DIFFICULTY	SCENERY
0.4 miles	9000 ft, little difference	Easy	2

Allowed Usage				



[Link to map color/symbol codes](#)

T11 and T233 are shown as black dashed lines on the map.

**DESCRIPTION:** The interpretive signs are in both text and braille. This trail was developed to provide a trail adapted for use by blind and visually impaired people.

This trail is a gem! It was developed to provide access to the forest for the blind and visually impaired. The interpretive signs are in both normal text and braille. Old railroad ties on either side of the trail define the graveled path. Each sign gives directions to the next, and the texture of the gravel changes to provide a signal that an interpretive sign is near. The hiker is encouraged to feel trees, to smell the forest, and enjoy the experience. An interpretive sign near the beginning notes that part of the trail is an old railroad logging spur. Everyone can enjoy this trail and appreciate its thoughtful design and execution.

**ACCESS:** Beginning in Cloudcroft at the intersection of NM130 and US82, drive NM130 south 1.2 miles to just beyond the large Deerhead Campground sign. Note the small Sleepy Grass Campground sign on the right just beyond the large sign. Angle left on Sleepy Grass Campground Road, and follow FR24B, a narrow two lane, paved road 0.7 mile to the parking area at the signed trailhead, just prior to the entrance to Sleepy Grass Campground.

#### GPS Coordinates for Key Points

NAD83	Lat/Lon hddd mm ss.s	UTM (13 )
Trailhead	N32 56 29.8 W105 44 16.5	431022 3645056
Start of Loop	N32 56 26.7 W105 44 12.9	431113 3644959

#### Links to Other Resources

[Link to map of Cloudcroft Area](#)

[Link to Full Topo Map](#)

Last Hiked: 2020

Updated 2/4/2021