

T219 Hell's Hole Trail

Sacramento Ranger District



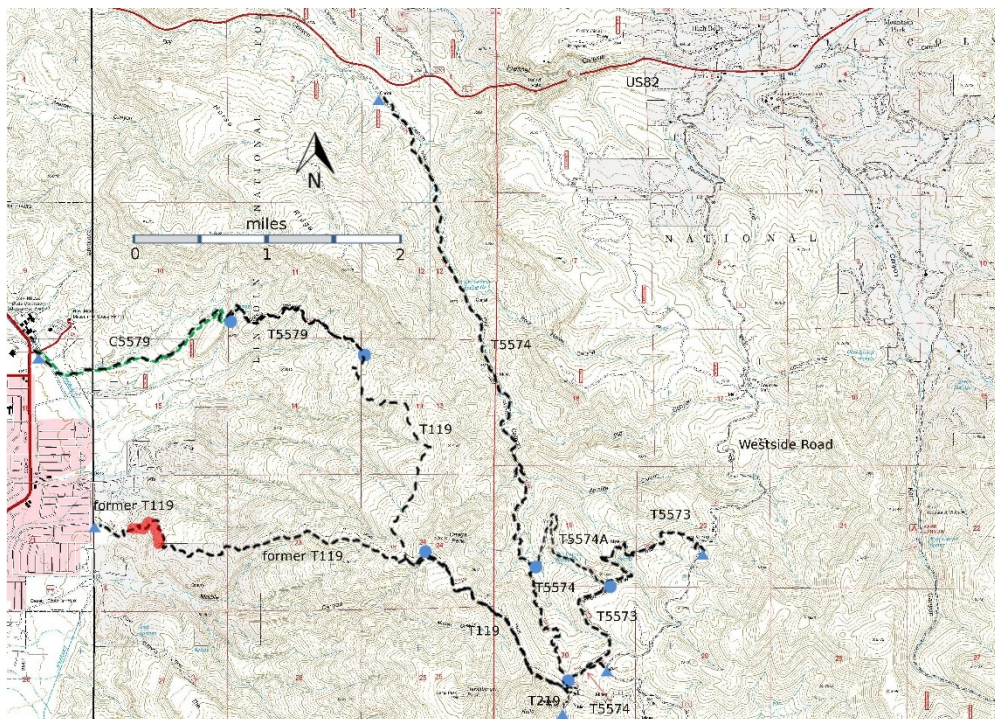
[T219](#)

GPS Track (as .GPX)

Left click to open in your browser; then save from browser.

LENGTH	ELEVATION	DIFFICULTY	SCENERY
0.5 miles	7040 - 7250 ft 210 ft difference	Easy	4

Allowed Usage				



[Link to map color/symbol codes](#)

T119, T219, T5573, T5574, and T5574A are shown as black dashed lines on the map.

NOTE: Several old mining roads branch from this trail. If you explore them, *do not enter any holes or shafts.*

DESCRIPTION: The route follows a former mining road, now highly rutted. At mile 0.4 from the upper trailhead, the trail begins to follow a ridge that overlooks Hells Hole, a deep canyon to the west. It is below Hershberger Peak, the highest mountain in this area.

To the south is an impressively large, upturned landform. At mile 0.5, the signed end of T219 marks the beginning of an unofficial trail leading south off the old road. It follows a faint path along the broad ridge, and in 500 feet passes through an open, barbed wire gate before dwindling out. The highlight of this faint route is that the views become increasingly better, opening into one of the most scenic areas of Lincoln National Forest. Pincushion cacti (*Mammillaria vivipara* var. *neo-mexicana*) are common and recognized by their several 4-inch tall, spherical, spiny columns grouped closely together.

ACCESS: To reach T219, use T5574. See the T5574 write up to find the upper T5574 trailhead. Hike down T5574 0.4 miles to its junction with T119. T219 branches from T119, toward the south, just 50 feet beyond that junction.

GPS Coordinates for Key Points

NAD83	Lat/Lon hddd mm ss.s	UTM (13 S)
Junction of T119 and T219	N32 52 57.0 W105 51 28.7	419746 3638588
Trail End	N32 52 45.1 W105 51 27.9	419763 3638221

Links to Other Resources

[Area Map](#)

[Alamogordo North - High Rolls Topo Map \(joined\)](#)

Last Hiked: 2021

Updated 1/31/2022