

T132 Courtney Mine Trail Sacramento Ranger District

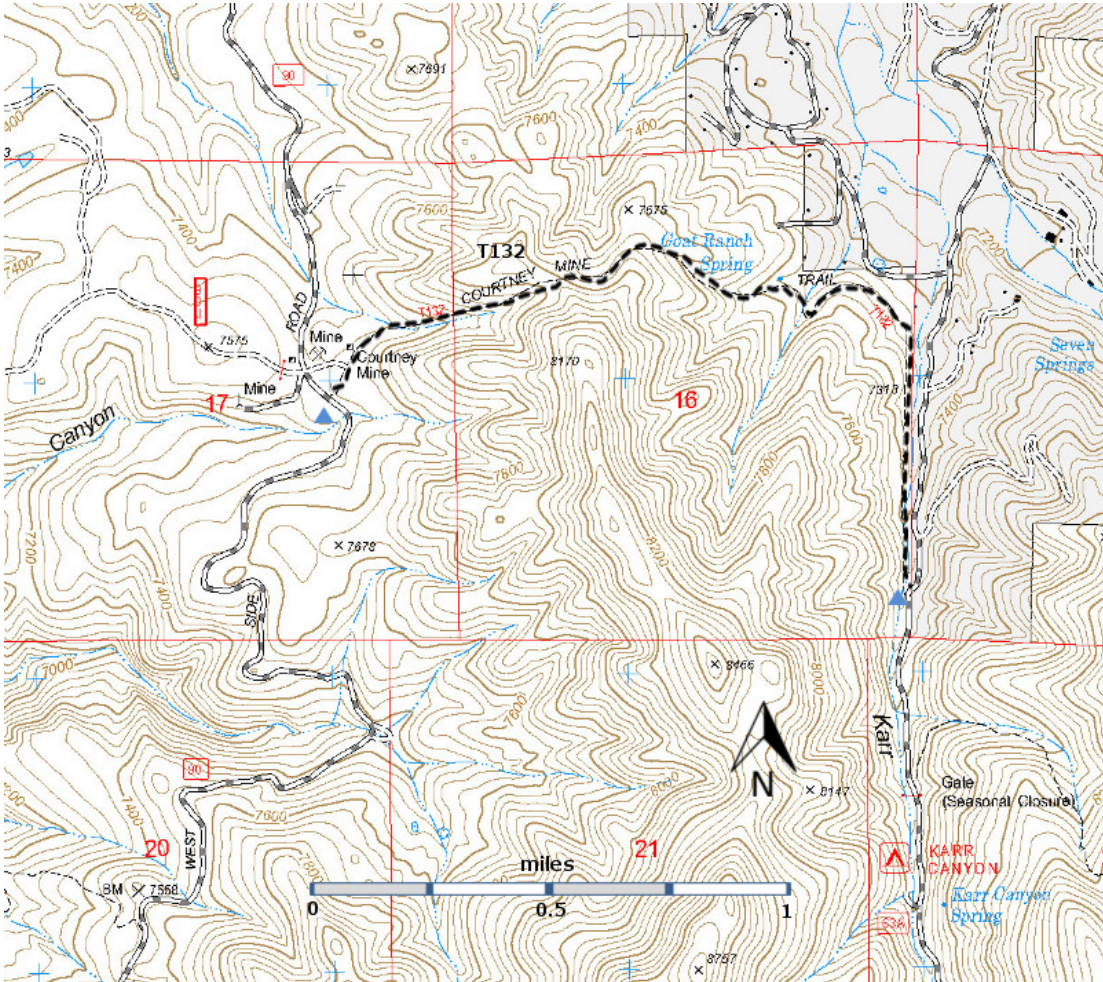


T132
GPS Track (as .GPX)

Left click to open in your browser; then save from browser.

LENGTH	ELEVATION	DIFFICULTY	SCENERY
2.1 miles	7240 - 7720 ft 480 ft difference	Moderate	2

Allowed Usage				



[Link to map color/symbol codes](#)

T132 is shown as a black dashed line on the map.

DESCRIPTION: From the eastern trailhead, the path parallels Karr Canyon Road down canyon for 0.4 mile, separated from the road by a moderately forested ravine. The trail follows an old road as it climbs.

At mile 0.8 is an interesting meadow and encased Goat Ranch Spring; the spring is not accessible. The path passes through pockets of Douglas-fir, oak and impressively large, scattered Ponderosa pine. Distant vistas are nonexistent except from one location near the crest on the east side. Look for this brief opening. It provides an excellent view of the High Rolls “bowl”.

On the west side, the route reaches 35% gradient. Losing the official path is easy due to intersections with several other unofficial trails. Keep heading west to Westside Road.

ACCESS: To reach the eastern trailhead, start at the (now closed) convenience store in High Rolls along US82. Follow US82 east 0.5 mile to signed Karr Canyon Road Turn right and drive 3.2 miles to a cattle guard; continue beyond the cattle guard for another 0.3 mile and find a small pull-off on the right where the trailhead is located.

To reach the western trailhead, begin in High Rolls at the junction of US82 and Westside Road (same as FR90 and County A061) across from the (now closed) convenience store, and drive Westside Road south 3.2 miles. On the right a “Road Closed” sign indicates a parking area for T132. Proceed about 100 feet south along Westside Road to the signed T132 trailhead on the left.

GPS Coordinates for Key Points

NAD83	Lat/Lon hddd mm ss.s	UTM (13 S)
Trailhead (East)	N32 54 23.8 W105 48 47.4	423955 3641228
Trailhead (West)	N32 54 46.6 W105 50 03.4	421988 3641945

Links to Other Resources

[High Rolls Topo Map](#)

Last Hiked: 2005

Updated 1/17/2016