

T131

Calico Peak Vista Trail

Sacramento Ranger District

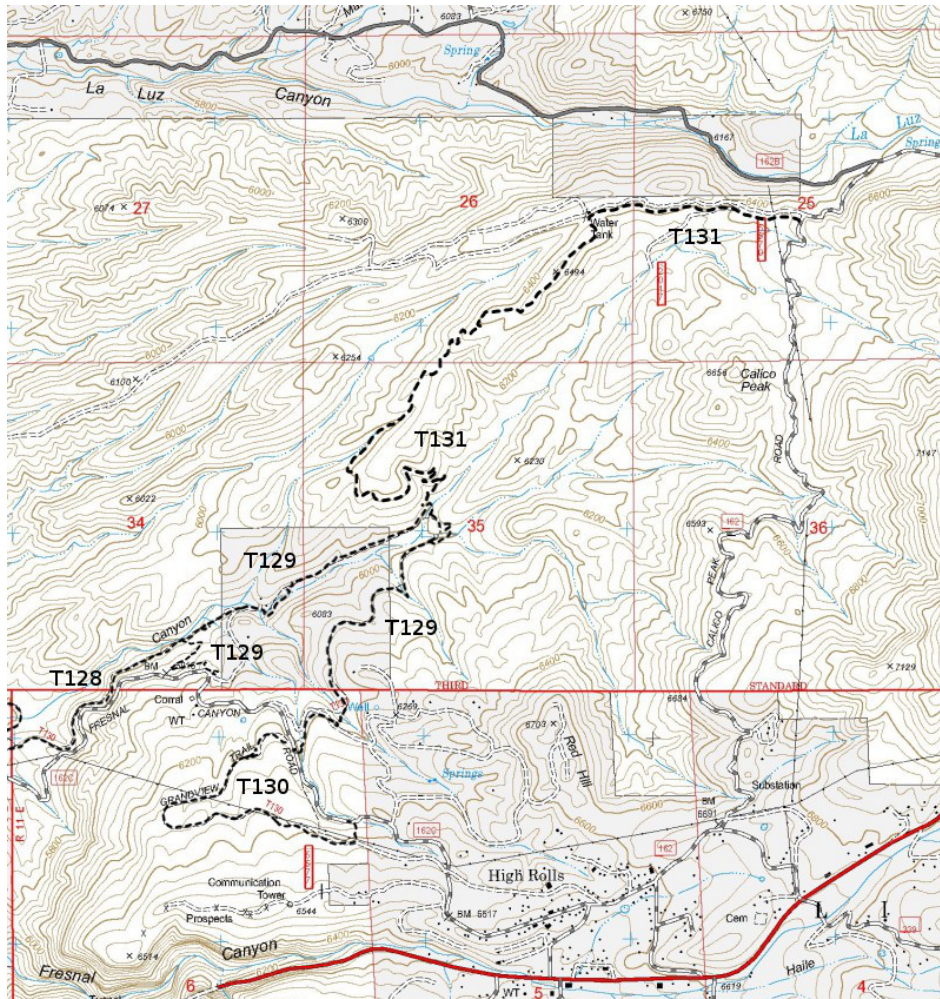


T131
GPS Track (as .GPX)

Left click to open in your browser; then save from browser.

LENGTH	ELEVATION	DIFFICULTY	SCENERY
2.7 miles See Text	6040 -6440 ft 400 ft difference	Easy	2

Allowed Usage				



T128, T129, T130, and T131 are shown as black dashed lines on the map.

DESCRIPTION: T131 is the first major trail developed by the New Mexico Rails to Trails Association as part of its plans to link the west end of T5004 Switchback Trail to the old Alamogordo & Sacramento Mountains Railroad railbed near LaLuz. It was laid out as a “bicycle quality” trail, with gradients under 8% and careful construction to make it sustainable over many years with relatively low maintenance. It is a joy to hike.

The trail passes through piñon-juniper woodlands. The initial 0.7 miles is shared with FR5700. At the water tank, T131 turns left and follows a ridge. There is a lovely meadow near its midpoint. The trail then curves left around the nose of the ridge and descends into Salado Canyon via several switchbacks.

If one accesses the upper T31 trailhead by following Calico Peak Road from the south, then, with road and trail, there is almost a 270° view of distinctive Calico Pak. Hence the name for this lovely trail.

ACCESS: To reach the upper T131 trailhead, take US82 to Mountain Park Road (just west of the Old Apple Barn) and follow Mountain Park Road 0.5 miles to its junction with Calico Peak Road (CPR), also signed as FR162. Follow Calico Peak Road 2.7 miles to the signed trailhead for T131. As you drive along Calico Peak Road, do take notice of the distinctive triangular Calico Peak, just to the west of Calico Peak Road.

Note: Calico Peak Road has the same red clay that is found on West Side Road, with the same results. If the road is wet, the clay is likely become sticky, slick mud, with deep ruts. Take caution in the rainy season. You may want to access the T131 trailhead from LaLuz Canyon road; it is 0.3 miles from the intersection of La Luz Canyon Road and Calico Peak Road.

To reach the lower T131 trailhead (at the junction of T129 and T131), you can begin at either T129 trailhead. From the east T129 trailhead, hike 1.4 miles downhill to the signed junction with T131. From the east T129 trailhead at Harris Hollow, hike 1.2 miles downhill – and past Bridal Veil Falls – to the signed junction with T131.

GPS Coordinates for Key Points on T131

NAD83	Lat/Lon hddd mm ss.s	UTM (13 S)
T131 Junction with T129	N32 58 06.7 W105 50 42.6	421019 3648114
T131 Trailhead (CPR)	N32 58 53.8 W105 49 31.5	422875 3649551

Links to Other Resources

[Link to Full Topo Map](#)
[Forest Service Resource](#)

Last Hiked: November 15, 2013

Updated 12/20/2019