

**T130**  
**Grandview Trail**  
**Sacramento Ranger District**

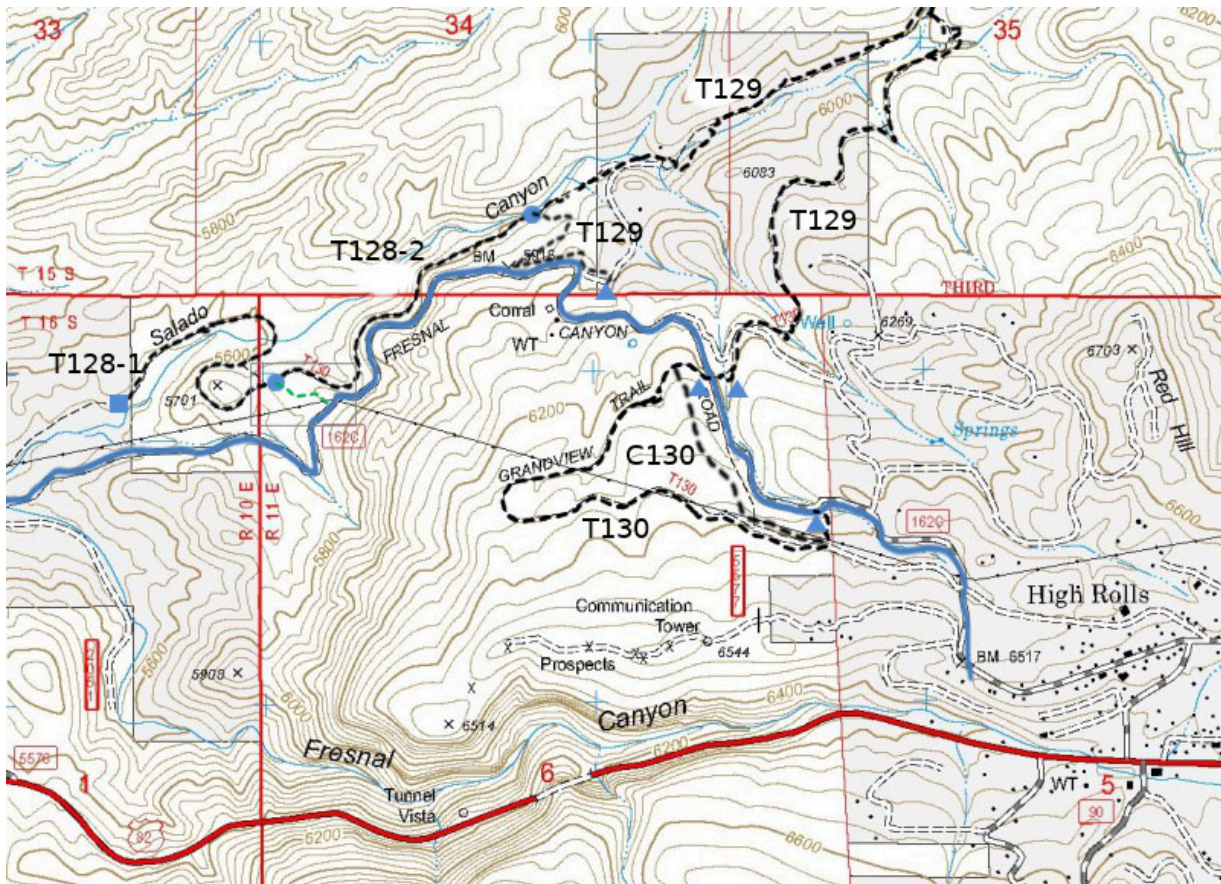


**T130**  
 GPS Track (as .GPX)

Left click to open in your browser; then save from browser.

LENGTH	ELEVATION	DIFFICULTY	SCENERY
1.9 miles See Text	5540 -5840 ft 400 ft difference	Easy	2

Allowed Usage				



[Link to map color/symbol codes](#)

T128, T129, and T130 are shown as black dashed lines on the map.

**DESCRIPTION:** The three trails, T128, T129, and T130, provide access to the portion of the old Alamogordo and Sacramento Mountains railroad bed that was used to gain altitude from the Tularosa Basin to the High Rolls area. In order to maintain a grade of approximately 3% while gaining over 900 feet in altitude, the path of the railroad had to be lengthened, hence the "Double S" curves, in which four tight curves (Salado Canyon, Salado Ridge, Pinto, and Grandview) are used to provide the extra distance. The trails have a uniform 3% grade, except where they dip to cross ravines and at the upper end, where T130 rejoins Fresno Canyon Road. They were developed by the New Mexico Rails to Trails Association.

From the west end of T128 Salado Canyon Trail to the east end of T130 Grandview Trail the distance is 5.3 miles. T130 Grandview Trail [1.4 miles] was developed first. T128 Salado Canyon Trail [1.5 miles] was developed next, but at the east end it stopped at a private property line. Once an easement was obtained to cross that private property, T129 Bridal Veil Falls Trail [2.3 miles] was developed. A connector provides access from a parking area on Fresno Canyon Road to T128.

The trails run through the mixed Juniper-Piñon areas below High Rolls. Bridal Veil Falls, which is fed by a year round spring is a visual gem. It provides a rare cool and green area in the high desert. T128 provides access to the Salado Canyon Trestle, which was restored by NMRTA volunteers. T129 provides access to Bridal Veil Falls and the Pinto area (an old siding stop). T130 passes through rail cuts and to a wide, curved embankment from which panoramic views of the Tularosa Basin and the San Andres Mountains are seen. Wooden culverts -- some still in excellent condition -- and ruins of old trestles can be seen.

Users of previous editions of the *Trail Guide* should note that (1) The west trailhead of T129 is now just off of Fresno Canyon Road, at Harris Hollow, and (2) T130A has been combined into the current T130. On the map above, T128 is shown as consisting of two segments, T128-1 (west of the connector, 0.9 miles long) and T128-2 (east of the connector, 0.6 miles long). These are not official Forest Service designations.

Hikers may wish to consider three separate hikes within this area:

(1) Park at the point where the power lines cross Fresno Canyon Road and hike 0.1 miles along the connector. Access T128 at its midpoint, and proceed west along T128-1 to the Salado Canyon Trestle (0.5 miles). The official end of T128-1 is 0.4 miles further at the Forest Service boundary. The next property west is owned by the City of Alamogordo, and hikers currently may continue along the old rutted railbed. A fence marks the start of private property, and hikers should not cross this fence. They may note the white sign with red letters.

(2) Park at the point where the power lines cross Fresno Canyon Road and hike 0.1 miles along the connector. Access T128 at its midpoint and proceed east along T128-2 for 0.6 miles to its unsigned junction with T129, and 0.2 miles further along T129 to Bridal Veil Falls. Either return along the same route or continue 2.1 miles along T129 to its trailhead at Fresno Canyon Road. If one then returns to the starting point by walking along Fresno Canyon Road, the distance is 1.1 miles.

(3) Access T130 [1.4 miles] at either of its trailheads on Fresno Canyon Road and return to the starting point by walking 0.4 miles along C130, a connector that avoids the safety hazards of walking along Fresno Canyon Road.

**ACCESS:** To reach the three trails and their trailheads, go to the convenience store in High Rolls. Just east of the store, turn north off US82 onto Cherry Way, and drive the paved road 0.2 mile to Cottage Row. Turn left and follow the paved road 0.5 mile to the signed junction for Fresno Canyon Road (FCR) on the right (same as FR162C). Turn right and follow FR162C for 0.5 miles to the signed east T130 trailhead. The signed west T130 trailhead is 0.5 mile further along FR162C. location. Parking at these two points is limited., particularly at the east trailhead.

The upper trailhead for T129 is on the opposite side of the road at the west T130 trailhead. The west trailhead for T129 is 0.5 miles further along Fresno Canyon Road, at a point where Fresno Canyon Road has a sharp left-turning curve [Local folks call this point “Harris Hollow”].

To reach T128, proceed 1.1 miles further along FR162C to a small signed parking area where the power lines cross FR162C. Follow the connector trail 0.1 miles to the signed middle of T128. T129 can be reached by hiking 0.6 miles east along T128.

**GPS Coordinates for Key Points on T130**

NAD83	Lat/Lon hddd mm ss.s	UTM (13 S)
T130 East Trailhead (FCR)	N32 57 29.8 W105 51 07.9	420353 3646985
T130 West Trailhead (FCR)	N32 57 17.1 W105 50 55.	420676 3646589

**Links to Other Resources**

- [Link to Full Topo Map](#)
- [Forest Service Resource](#)
- [C130](#)

Last Hiked: 4/18/2022

Updated 1/31/2023