

# T126 Scott Able Trail

Sacramento Ranger District

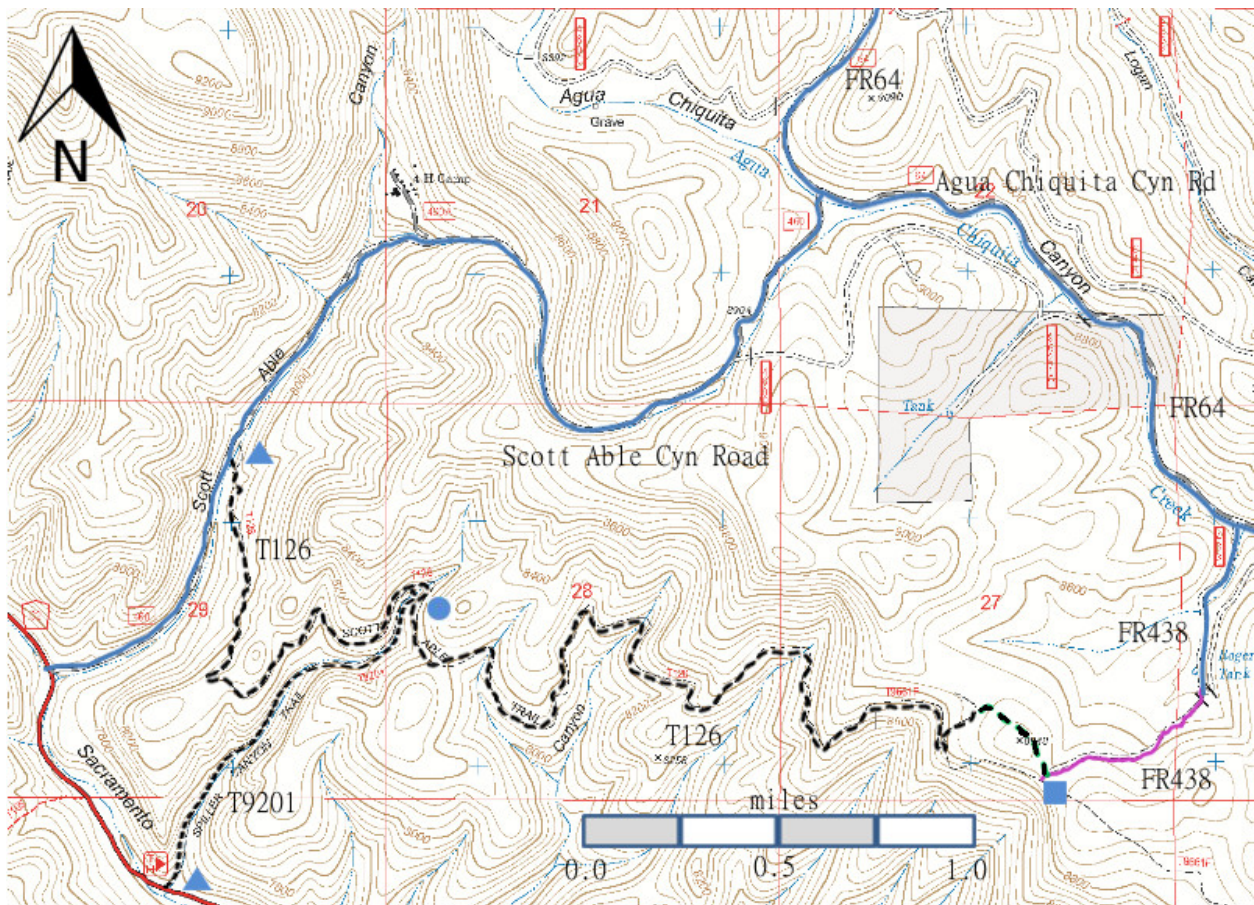


**T126**  
GPS Track (as .GPX)

Left click to open in your browser; then save from browser.

LENGTH	ELEVATION	DIFFICULTY	SCENERY
4.4 miles See Text	7,776-8846 ft 1160 ft difference	Moderate	3

Allowed Usage				



[Link to map color/symbol codes](#)

T126 and T9201 are shown as black dashed lines on the map.

**NOTE:** The west end of T126 has been damaged by floods, and the cut bank may be difficult to scramble up to the undamaged trail.

**DESCRIPTION:** T126 provides considerable variety along its snaky route that passes in and out of several side canyons. This former timber road is easy to use, and has grades with 20% maximum, but that seldom reach 12%. At mile 1.6 from the lower end, the route begins to pass through intermittent charred patches, including total burns, from the Scott Able Fire of 2000. Some common trees remaining along the pathway are Douglas-fir, Gambel oak, Ponderosa pine and southwestern white pine, and fir. Seasonal wildflowers are thinly scattered. Distant views become special at about mile 2.0, although they are best when hiking from the upper trailhead in the opposite direction.

Near the top, a gate must be opened and closed. A dramatic change in trail surroundings soon occurs as you enter a high, moderately forested area with open understory, grass carpet, and great beauty. Shortly after the gate, the trail forks. A carsonite sign directs the hiker toward the right fork, where, 0.3 miles further, the trail ends on a broad saddle, at the upper end of (unsigned) FR438.

An excellent hike, with less climb, consists of starting at the junction of Aqua Chiquita Canyon Road and FR438, following FR438 for 0.9 miles to the broad saddle, turning right onto (unsigned) T126, and descending along T126. The views of Tularosa Basin are very nice. For those wanting to hike both T126 and T9201, consider hiking up T126, and on the return trip take T9201 from its upper end. Return to the lower T126 trailhead by hiking 1.4 miles along FR537 and FR460.

**ACCESS:** Begin in Cloudcroft at the intersection of US82 and NM130. Drive NM130 south 1.8 miles and turn right on NM6563, Sunspot Highway; follow the pavement 14 miles to milepost 14. Drive another 0.2 mile to the Sunspot junction, the turnoff for the Sunspot Highway (ending at Sunspot), and the beginning of paved County Road C002, also known as Sacramento Canyon and FR537. Drive C002 7.5 miles to the signed FR460 intersection. FR460 is also known as Scott Able Road. Turn left and follow FR460 0.75 mile to the lower T126 trailhead on the right.

Accessing the upper end of T126 is more difficult. Begin at the FR537 and FR460 intersection just mentioned; drive graveled and steep FR460/Scott Able Road (up to 15% gradient) 4.0 miles to its end at Aqua Chiquita Canyon Road. Turn right and follow Aqua Chiquita Canyon Road 1.5 miles to FR438, on the right. Park in the open grassy area and hike on FR438 for 0.9 miles to the impressive saddle at the summit. The gate across FR438 may be open, but FR438 has big mud holes and is closed after 0.4 miles (*very badly rutted after this point*). Enjoy the walk!

**DISTANCES AND ALTITUDES:** From the lower trailhead to the upper trailhead, the one way distance is 4.5 miles and the altitude gain is 1160 feet. From the upper trailhead, along the connector trail, to the junction with the upper end of FR438 the one way distance is 0.3 miles and the altitude gain is 30 feet. From the junction of Aqua Chiquita Canyon Road and FR438 to the summit, the one way distance is 0.9 miles and the altitude gain is 250 feet. A hike from the junction of Aqua Chiquita Road and FR438 to the lower T126 trailhead is 5.7 miles, with an altitude gain of 250 feet to the summit, followed by an altitude drop of 1190 feet to the T126 lower trailhead. The one way distance along Scott Able and Aqua Chiquita Canyon Roads from the lower T126 trailhead to the junction of Aqua Chiquita Canyon Road and FR438 is 4.8 miles and the altitude gain is 940 feet.

### GPS Coordinates for Key Points

NAD83	Lat/Lon hddd mm ss.s	UTM (13 S)
Trail End (summit)	N32 42 22.4 W105 42 02.2	434336 3618937
Trailhead	N32 43 05.5 W105 44 10.6	431003 3620287

### Links to Other Resources

[Link to Full Topo Map](#)

Last Hiked: July 23, 2013

Updated 2/9/2021