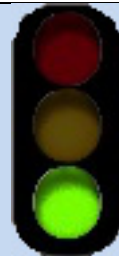


# T124

## Little Apache Trail

### Sacramento Ranger District



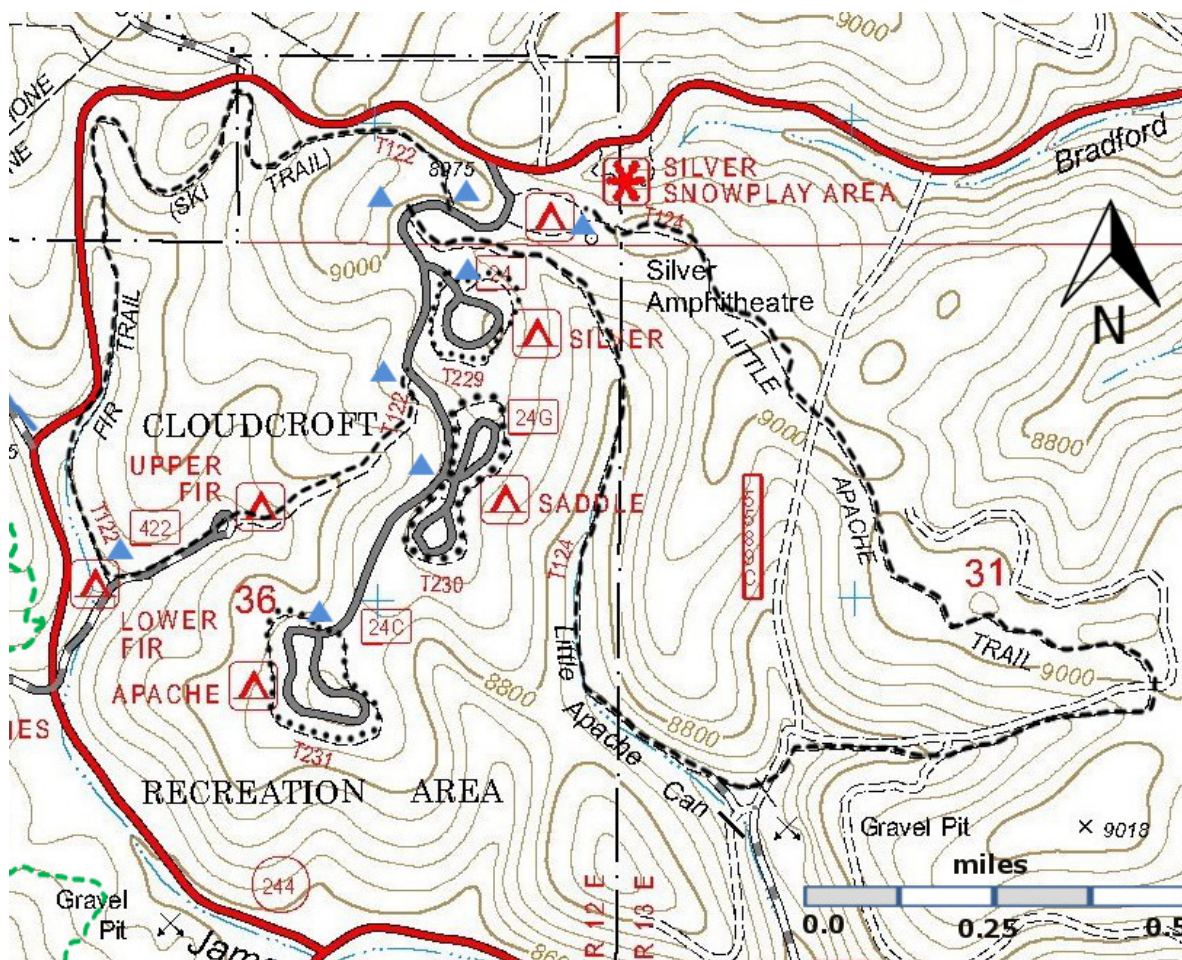
#### T124

GPS Track (as .GPX)

Left click to open in your browser; then save from browser.

LENGTH	ELEVATION	DIFFICULTY	SCENERY
2.7 miles	8,680-9000 ft 320 ft difference	Moderate	2

Allowed Usage				
✓	✓	✓	✓	✗



[Link to map color/symbol codes](#)

T122, T124, T229, T230, and T231 are shown as black dashed lines on the map.

**NOTE:** A host tends each campground, including the overflow area. If you are planning to use only the trails and not camp, there is no charge. However, *inform the host of your intentions and ask where you should park*, especially if the trailhead is in a camping area such as the north end of T124.

**DESCRIPTION:** T124 begins like a primitive road in reasonably good shape. It stays at around 9,000 feet, often following a broad ridge, for a third of its length. Recent forest thinning has added to the open under story. *Care must be exercised to stay on the correct trail.* Be sure to follow the blue ski signs at critical path junctions. At mile 0.6, take advantage of distant views from the top of a ridge on the left, about 100 feet from the trail. At mile 1.7, an active gravel pit is within view. From here for the next 0.7 mile, at about 15% gradient, the route ascends through a lush open valley up to 200 feet wide, where evidence of the path is sometimes lacking. Soon after passing through a gate, campground noise may be heard. The trail ends in 0.2 mile after ascending a short steep slope.

In the winter months, T122 and T124 are often groomed as a cross country ski trails.

**ACCESS:** Begin in Cloudcroft at the intersection of US82 and NM130, and drive US82 east 1.3 miles to its junction with NM244. Turn left and follow NM244 north 1.8 miles to the large entrance sign on the right for Silver, Saddle, and Apache Campgrounds. All trails are accessed from here and directions to trailheads are given in the order reached from the main campground entrance as follows: east end of T124, north end of T122, west end of T124, T229, south end of T122, T230, and T231.

#### GPS Coordinates for Key Points on T124

NAD83	Lat/Lon hddd mm ss.s	UTM (13 S)
West Trailhead	N32 58 31.9 W105 43 37.2	432067 3648809
East Trailhead	N32 58 31.8 W105 43 23.0	432436 3648803

#### Links to Other Resources

[Link to map of Cloudcroft Area](#)

[Link to Full Topo Map](#)

Last Hiked: 2020

Updated 2/4/2021