

T122 Fir Trail

Sacramento Ranger District



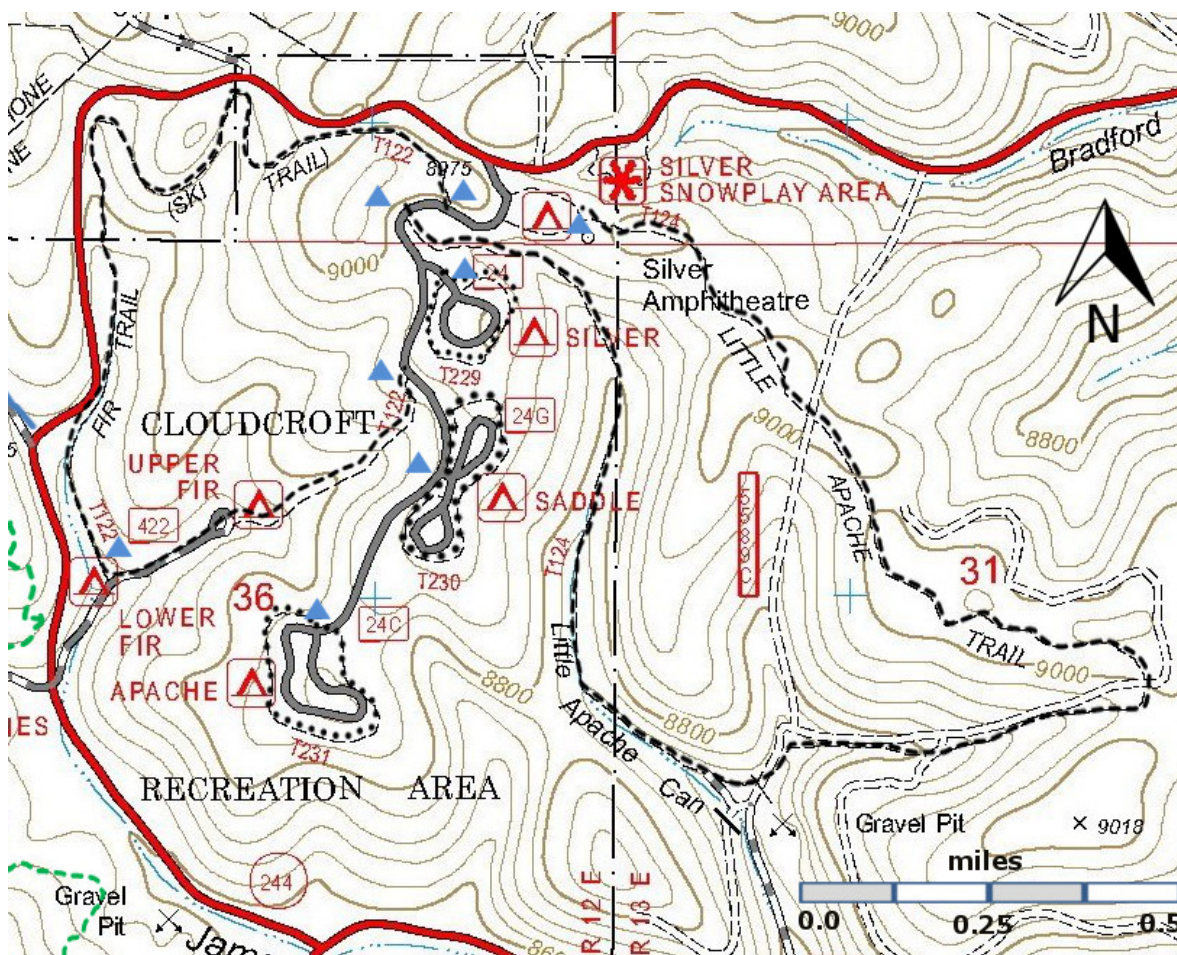
T122

GPS Track (as .GPX)

Left click to open in your browser; then save from browser.

LENGTH	ELEVATION	DIFFICULTY	SCENERY
1.9 miles	8,660-9000 ft 340 ft difference	Moderate	2

Allowed Usage				
✓	✓	✗	✗	✗



[Link to map color/symbol codes](#)

T122, T124, T229, T230, and T231 are shown as black dashed lines on the map.

NOTE: A host tends each campground, including the overflow area. If you are planning to use only the trails and not camp, there is no charge. However, *inform the host of your intentions and ask where you should park*, especially if the trailhead is in a camping area such as the north end of T124.

DESCRIPTION(S): T122 offers a variety of environments. Grades vary up to 30%. This trail and T 124 are marked by blue ski signs at critical locations, often within sight of each other. But due to numerous other paths, *care must be exercised to stay on these trails*. A rather winding path, T122 soon passes through thick forests of sub-alpine fir, Douglas-fir and Ponderosa pine. Trail right-of-way varies from a narrow track, sometimes difficult to follow, to a 20-foot thoroughfare, taking the place of an old logging road. At mile 1.0 from the trailhead, a delightful mountain valley ranging up to about 100 feet wide begins, with abundant grass and open understory. After another half mile, the trail passes through both Lower and Upper Fir Group Campsites. It leaves the campsites near a toilet at mile 1.6, following a small gully that threadsthrough an open understory as it ascends a grade up to 20% to its southern trailhead

In the winter months, T122 and T124 are often groomed as a cross country ski trails.

ACCESS: Begin in Cloudcroft at the intersection of US82 and NM130, and drive US82 east 1.3 miles to its junction with NM244. Turn left and follow NM244 north 1.8 miles to the large entrance sign on the right for Silver, Saddle, and Apache Campgrounds. All trails are accessed from here and directions to trailheads are given in the order reached from the main campground entrance as follows: east end of T124, north end of T122, west end of T124, T229, south end of T122, T230, and T231.

To reach the northernmost end of T122, begin just inside the main campground entrance and drive straight ahead 0.1 mile to the signed trailhead on the right. Pull off the road into a ditch at the trailhead. There is no established parking here, but room for about two vehicles. To reach the south end of T122, drive from the Silver Campground entrance 0.1 mile towards Saddle Campground, stopping en route on the right at the signed T122 trailhead. No formal parking exists, so find a wide spot to park.

GPS Coordinates for Key Points on T122

NAD83	Lat/Lon hddd mm ss.s	UTM (13 S)
North Trailhead	N32 58 32.1 W105 43 33.4	432166 3648813
South Trailhead	N32 58 20.9 W105 43 36.7	432077 3648471

Links to Other Resources

[Link to map of Cloudcroft Area](#)

[Link to Full Topo Map](#)

Last Hiked: 2020

Updated 2/4/2021