

T11

Sleepy Grass Trail

Sacramento Ranger District

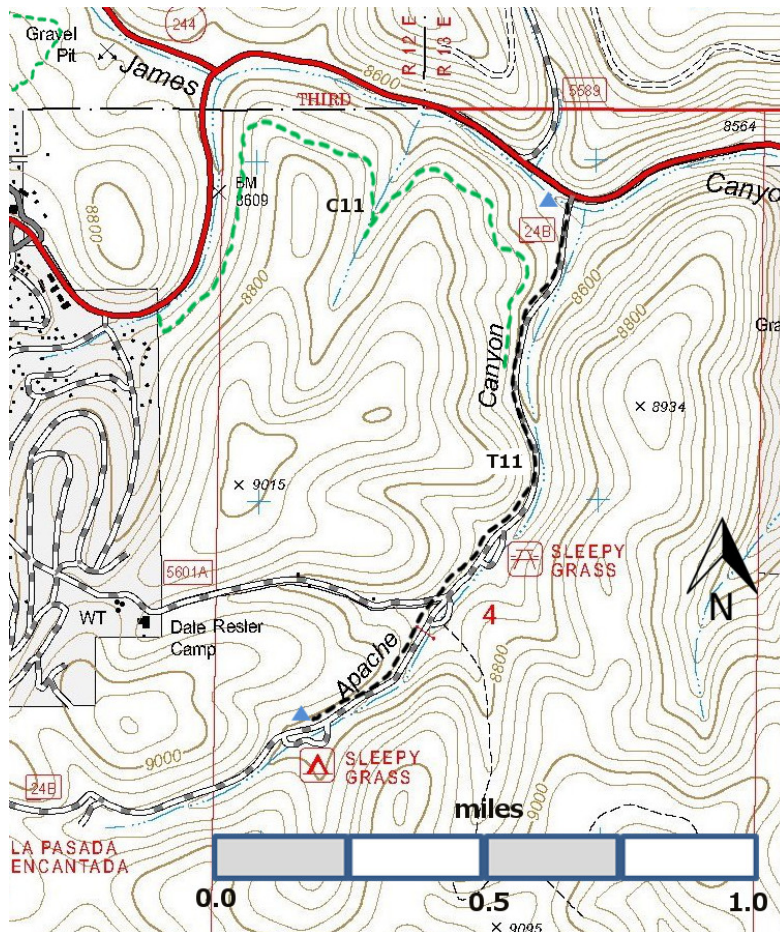


T11
GPS Track (as .GPX)

Left click to open in your browser; then save from browser.

LENGTH	ELEVATION	DIFFICULTY	SCENERY
1.1 miles	8460 - 8800 ft 340 ft difference	Easy	1

Allowed Usage				



[Link to map color/symbol codes](#)

T11 and T233 are shown as black dashed lines on the map. C11 is shown as a dashed green line on the map.

DESCRIPTION: This trail is a forest road that has been renumbered as a trail. From the north (lower) trailhead, it follows the bottom of Apache Canyon at a constant gradient of 5% and ends at the north end of Sleepy Grass Campground. There are nice stands of Ponderosa and Fir along the canyon.

ACCESS: North (lower) Trailhead: From the intersection of NM130 and US82 in Cloudcroft, drive 2.1 miles east on US82 to the Sleepy Grass Picnic Area. The signed trailhead is just past the gate.

South (upper) Trailhead: From the intersection of NM130 and US82 in Cloudcroft, drive NM130 south 1.2 miles to just beyond the large Deerhead Campground sign. Note the small Sleepy Grass Campground sign on the right just beyond the large sign. Angle left on Sleepy Grass Campground Road. Follow a narrow two lane, paved road 0.7 mile to the parking area at the entrance to Sleepy Grass Campground. Ask the campground host if you can drive to the T11 trailhead. If not, park and hike 0.8 miles to the signed trailhead.

For hikers starting from the Sleepy Grass campground, C11 provides a nice scenic 1.7 mile hike along old logging railbed to reach the east end of Cloudcroft. Follow the old railbed until you are near Big Daddy's café and then make your way down slope (no trail).

DISTANCE AND ALTITUDE: The trail is 1.1 miles long, and likely will be hiked as an "out and back" trail, for a total distance of 2.2 miles. If one leaves a car at the south (accessible) entrance to Sleepy Grass Campground, there is an additional 0.8 miles to hike to reach the south trailhead. The altitude gain is 340 ft; the gradient for this old road is a nearly constant 5%.

GPS Coordinates for Key Points

NAD83	Lat/Lon hddd mm ss.s	UTM (13 S)
North Trailhead	N32 57 29.4	432910
	W105 43 04.2	3646877
South Trailhead	N32 56 39.8	432198
	W105 43 31.3	3645356

Links to Other Resources

[Link to map of Cloudcroft Area](#)

[Link to Full Topo Map](#)

[C11-LM.gpx](#)

Last Hiked: 7/19/2017

1/5/2019