

T113

Willie White Trail

Sacramento Ranger District



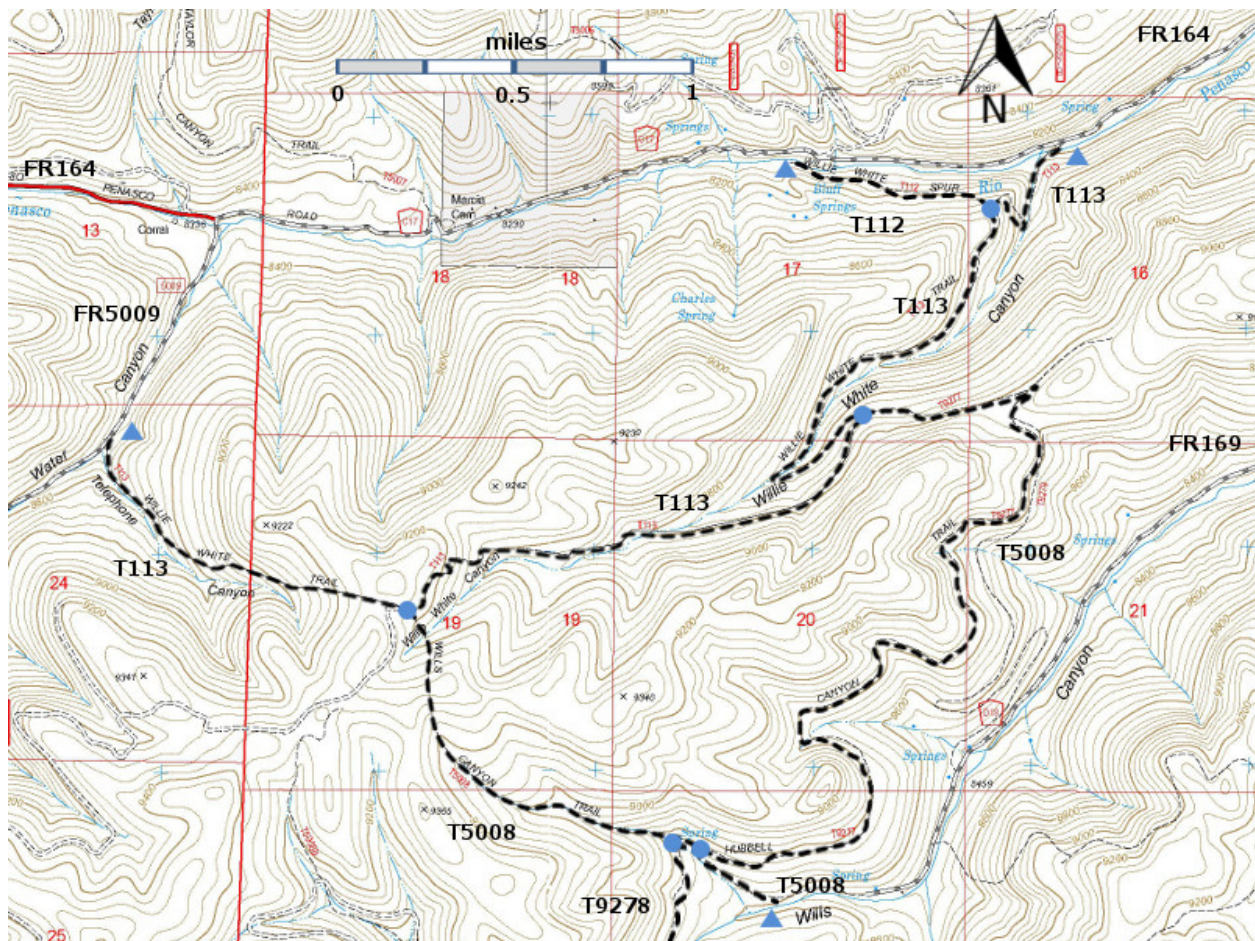
T113

GPS Track(as .GPX)

Left click to open in your browser; then save from browser.

| LENGTH | ELEVATION | DIFFICULTY | SCENERY |
|-----------|--------------------------------------|------------|---------|
| 5.2 miles | 8000 - 9360 ft 1360 ft difference | Moderate | 3 |

| Allowed Usage | | | | |
|---------------|---|---|---|---|
| | | | | |
| ✓ | ✓ | ✓ | ✓ | ✓ |



[Link to map color/symbol codes](#)

T112, T113, T5008, and T9278 (partial) are shown as black dashed lines on the map.

NOTE: Perhaps the loveliest loop hike per mile in the Sacramento RD consists of hiking T113 to its junction with T112, T112 down to Bluff Springs and returning to the T113 along FR164. Total distance is $0.6 + 0.6 + 0.8 = 2.0$ miles for the loop. You get wonderful forest scenery along the T113 portion, railroad history along the T112 portion, Bluff Springs itself, and the joys of walking along a gravel road.

DESCRIPTION: T113, the core trail among T112, T113, and T5008, is a heavily used path that follows old railroad grades for 2.3 miles, beginning at mile 0.6 from FR164. At mile 2.1, at the lower signed T5008 trailhead, T113 makes a sharp switchback to the right onto another railroad grade. The trail now threads along the sides and floor of a canyon that includes pleasing open areas of varying types of forest and other vegetation, and scenic views. Thick aspen groves and meadows are common before the path reaches the crest at mile 4.0. This location along T113 also marks the upper terminus for T5008, just prior to crossing an old logging road.

A remnant of old growth forest can be accessed from this logging road. Turn left off T113, and follow the logging road 0.5 mile to an old road junction. Nice views open up on the right side. Turn left at this junction and, for the next 0.2 mile, the route passes adjacent to a magnificent mature forest of very large Douglas-fir and white fir with some spruce and aspen. Return to T113 along the same route.

Beyond the summit, and after crossing the logging road, T113 enters an entirely different environment, and becomes rough with rocks up to baseball size or more. The rugged path passes along a narrow corridor through a thick, young, mixed conifer forest. At 0.9 mile from the summit, a small, intriguing, calcitic stream descends a steep incline on the far side of the narrow deep canyon. From here to the end of the route, varied scenic landscapes become the rule. The steepest gradient along this section of T113 is about 15%.

ACCESS: To reach the T113 trailhead at the mouth of Willie White Canyon, begin in Cloudcroft at the US82 and NM130 intersection. Drive NM130 south 1.8 miles. Turn right on NM6563, Sunspot Highway, and follow to milepost 8 in 8 miles. Go another 0.5 mile and turn left on Rio Penasco Road (Bluff Springs, same as FR164 and County C017. Continue past the end of pavement at mile 1.9, and beyond Bluff Springs Recreation Site at mile 3.7; go to mile 4.5 marking the beginning of T113 on the right at an intermittent stream crossing.

To reach the other end of T113, at the mouth of Telephone Canyon, drive FR164 1.9 miles from NM6563 to the end of the pavement. Turn right on FR5009, Water Canyon Road, and drive 0.6 mile up canyon to the signed T113 trailhead on the left.

GPS Coordinates for Key Points

| NAD83 | Lat/Lon hddd mm ss.s | UTM (13 S) |
|---------------------------------------|-----------------------------|-------------------|
| Trailhead (West) | N32 49 10.6 W105 46 17.2 | 427787 3631552 |
| Junction of T113 and T5008 (Crest) | N32 48 44.5 W105 45 25.5 | 429126 3630740 |
| Junction of T113 and T5008 (East) | N32 49 14.2 W105 44 04.4 | 431242 3631640 |
| Junction of T112 and T113 | N32 49 44.7 W105 43 41.9 | 431834 3632575 |
| Trailhead (East) | N32 49 54.1 W105 43 29.2 | 432165 3632861 |

Links to Other Resources

[Area Map](#)

[Sacramento Peak-Bluff Springs Topo Maps \(joined\)](#)

[Forest Service](#)

[Resource](#)

Last Hiked: 2009

Updated 1/17/2016