

T112

Willie White Spur Trail

Sacramento Ranger District



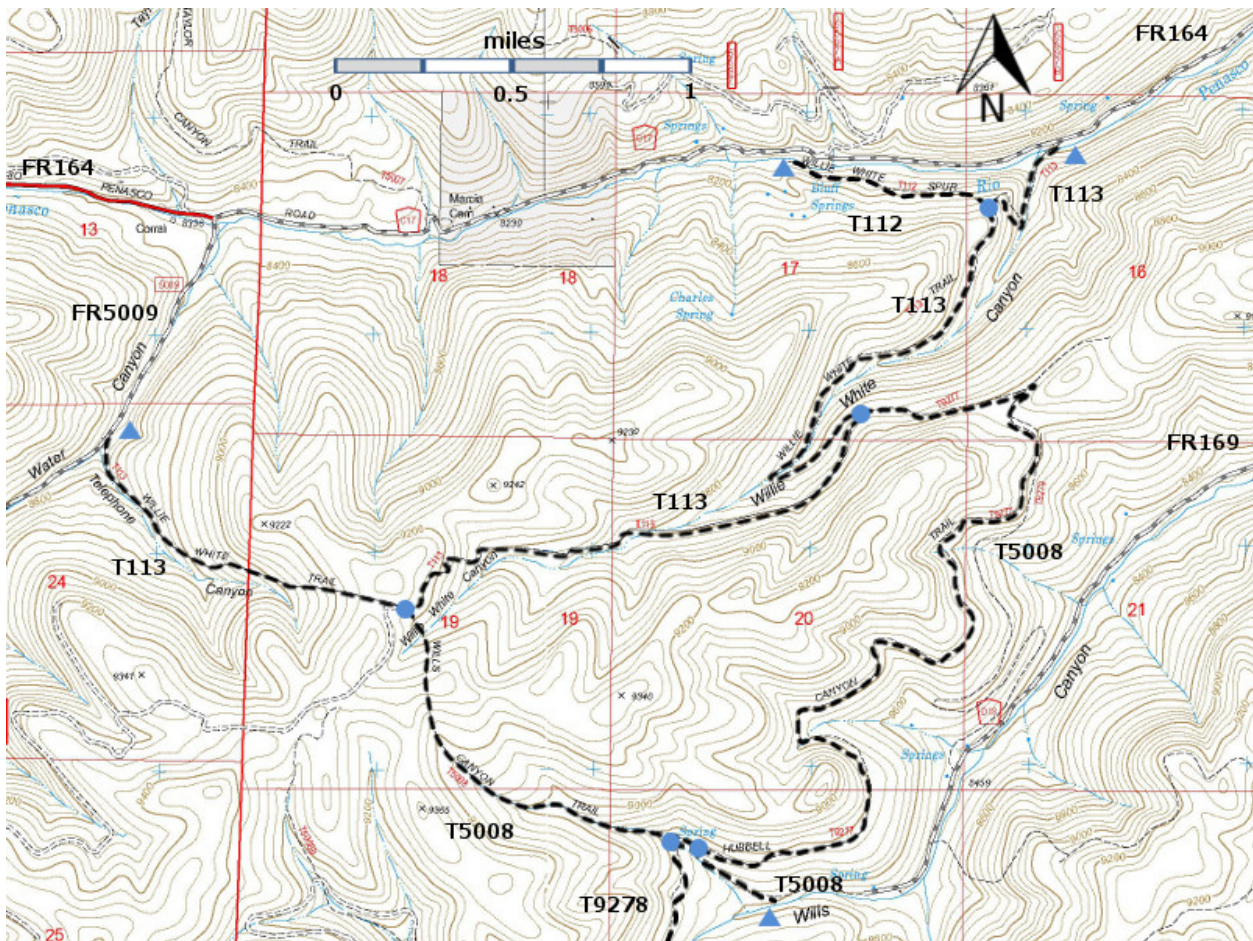
T112

GPS Track (as .GPX)

Left click to open in your browser; then save from browser.

LENGTH	ELEVATION	DIFFICULTY	SCENERY
0.6 miles	8100 - 8250 ft 150 ft difference	Easy	3

Allowed Usage				
✓	✓	✓	✓	✗



[Link to map color/symbol codes](#)

T112, T113, T5008, and T9278 (partial) are shown as black dashed lines on the map.

NOTE: Perhaps the loveliest loop hike per mile in the Sacramento RD consists of hiking T113 to its junction with T112, T112 down to Bluff Springs and returning to the T113 along FR164. Total distance is $0.6 + 0.6 + 0.8 = 2.0$ miles for the loop. You get wonderful forest scenery along the T113 portion, railroad history along the T112 portion, Bluff Springs itself, and the joys of walking along a gravel road.

DESCRIPTION: From Bluff Springs Recreation Site, T112 follows an old railroad grade for most of its length. A few old railroad ties remain visible in wet areas near the lower terminus. At mile 0.2 from the lower end are the ruins of a badly deteriorated wooden railroad trestle, built around 1924. It is well worth a walk, 0.5 mile round trip, from the Bluff Springs parking area to see this bit of history from the logging railroad days in the Sacramento Mountains. *Do not walk on the bridge timbers or attempt to move any of them.* Average gradient for T112, except for the trail around the trestle, is just 3%.

ACCESS: To find the lower end of T112, begin in Cloudcroft at the US82 and NM130 intersection. Drive NM130 south 1.8 miles. Turn right on NM6563, Sunspot Highway, and follow to milepost 8 in 8 miles. Go another 0.5 mile and turn left on Rio Penasco Road (Bluff Springs) (same as FR164 and County C017). Follow past the end of pavement at mile 1.9, to Bluff Springs Recreation Site at mile 3.7. Walk across the footbridge and turn left; the signed lower trailhead is immediately ahead. To access the upper end of T112, hike T 113 0.6 mile from FR164 to an old railroad grade; turn right at the signed T112 trailhead.

GPS Coordinates for Key Points

NAD83	Lat/Lon hddd mm ss.s	UTM (13 S)
Junction of T112 and T113	N32 49 44.7 W105 43 41.9	431834 3632575
Trailhead	N32 49 51.1 W105 44 15.3	430966 3632778

Links to Other Resources

[Area Map](#)

[Sacramento Peak-Bluff Springs Topo Maps \(joined\)](#)

[Forest Service](#)

[Resource](#)

Last Hiked: 8/12/2017

Updated 1/3/2019