

T111

Atkinson Field Trail

Sacramento Ranger District



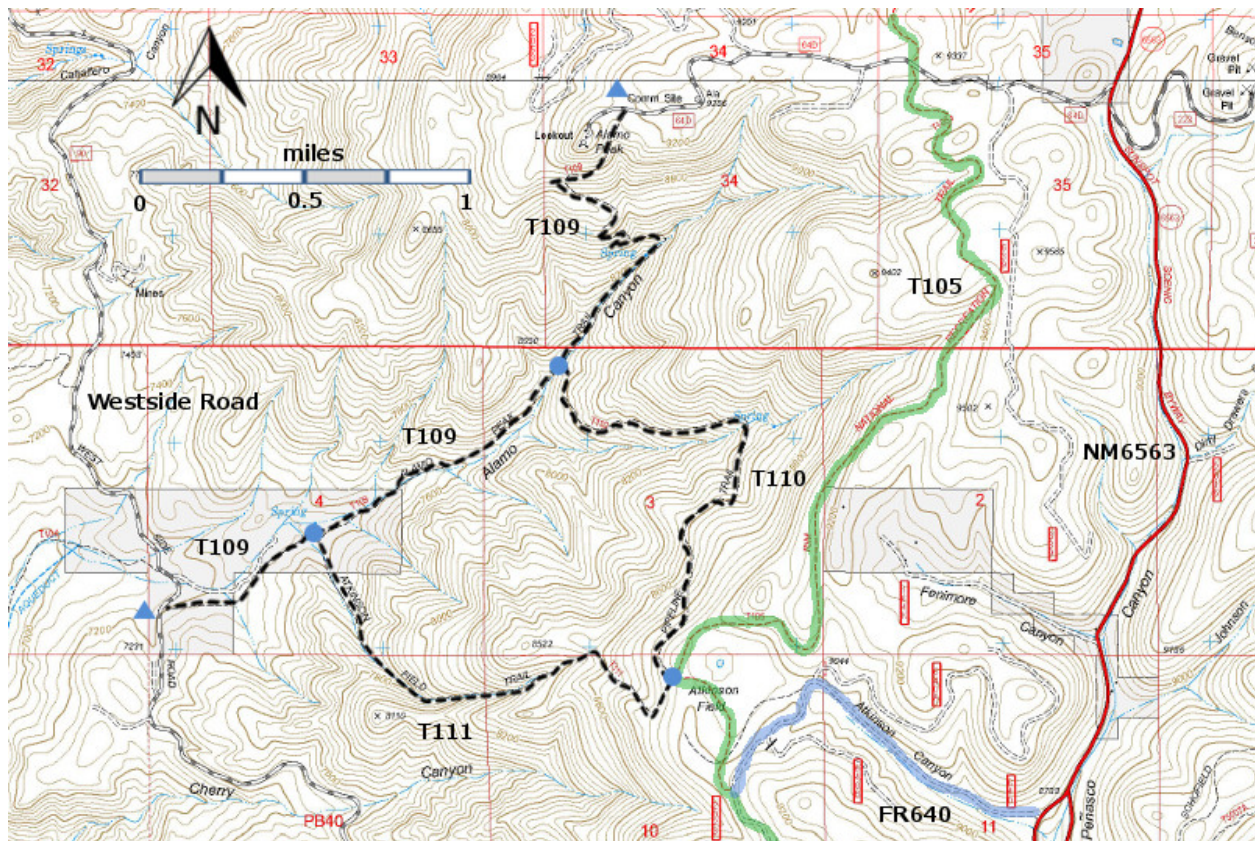
T111

GPS Track (as .GPX)

Left click to open in your browser; then save from browser.

| LENGTH | ELEVATION | DIFFICULTY | SCENERY |
|-----------|--------------------------------------|------------|---------|
| 1.6 miles | 7350 - 8950 ft 1600 ft difference | Moderate | 1 |

| Allowed Usage | | | | |
|---------------|---|---|---|---|
| | | | | |
| ✓ | ✓ | ✓ | ✓ | ✗ |



[Link to map color/symbol codes](#)

T109, T110, and T111 are shown as black dashed lines on the map. T105 Rim Trail is shown as a solid green line..

DESCRIPTION: T111 provides a quick, direct route from the crest of the Sacramento Mountains to T109, and FR 90 via 0.5 mile on T109. Without switchbacks, it ranges in gradient from 15% to 25%. Beginning at mile 0.7 from the upper trailhead, it descends quite evenly to mile 1.3. The area around the lower end of the trail provides an ideal secluded camping site, compared to the highly used Alamogordo water department land just across the cattle guard from the lower end of T109.

ACCESS: The upper trail ends for T110 and T111 are reached by driving to milepost 8 along NM 6563. Go 0.6 mile further south and turn right on FR640, Atkinson Canyon Road; drive 0.8 mile to the head of the canyon. After crossing a cattle guard, immediately turn right and park. Return to FR640 and hike 0.5 mile to where T105 crosses the road. Turn right and hike T105 0.5 mile to the upper trail end for T111, at the large National Recreational Trail sign for T105. To reach the signed, upper trail end for T110, follow T111 just 50 feet.

To reach the lower trail end for T 111, follow T109 from its lower trailhead to its junction with T111 in 0.5 mile.

See the write up for T109 for three good loop hikes plus a photo opportunity.

GPS Coordinates for Key Points

| NAD83 | Lat/Lon hddd mm ss.s | UTM (13 S) |
|---------------------------|-----------------------------|-------------------|
| Junction of T105 and T110 | N32 50 56.7 W105 48 28.5 | 424399 3634844 |
| Junction of T109 and T111 | N32 51 18.7 W105 49 36.9 | 422625 3635538 |

Links to Other Resources

[Area Map](#)

[Sacramento Peak Topo Map](#)

Last Hiked: 8/25/2018

1/3/2019