

T110 Pipeline Trail

Sacramento Ranger District



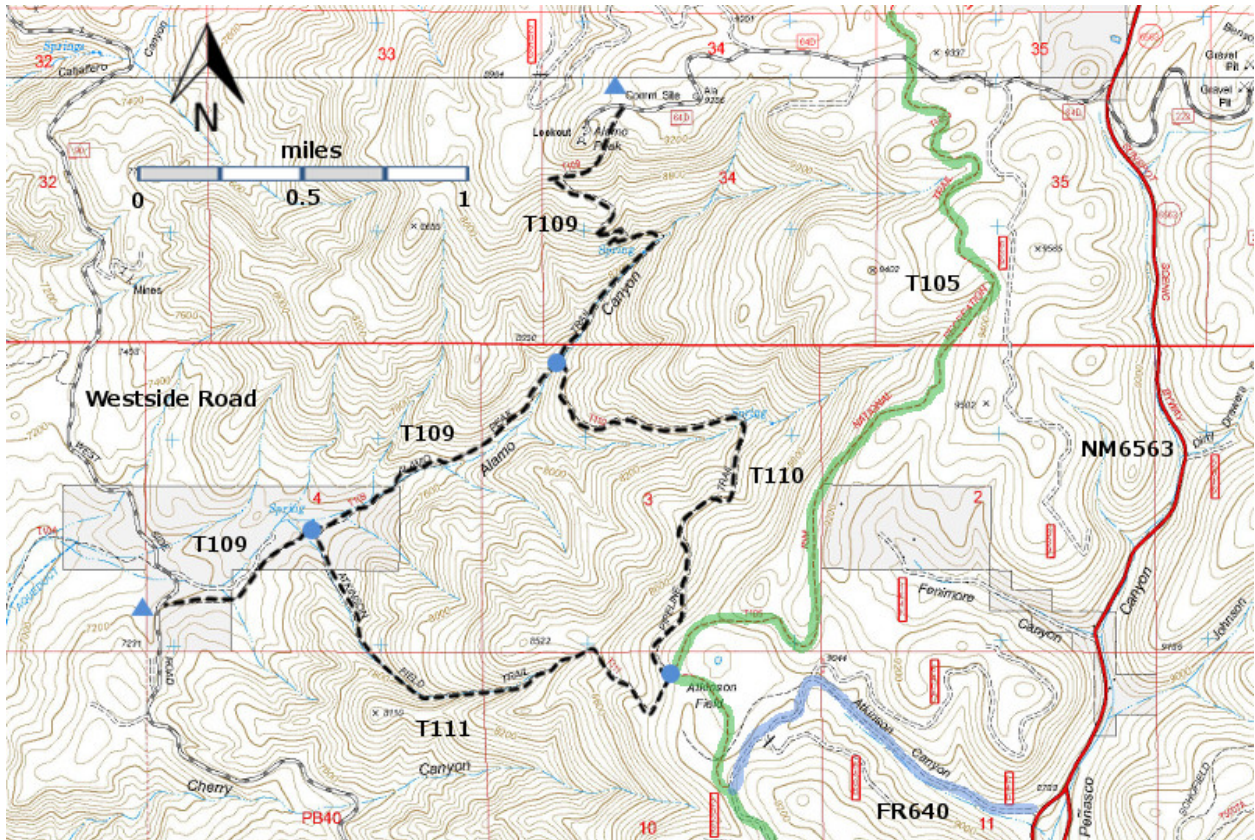
T110

GPS Track(as .GPX)

Left click to open in your browser; then save from browser.

LENGTH	ELEVATION	DIFFICULTY	SCENERY
1.7 miles	7900 - 8950 ft 1050 ft difference	Moderate	2

Allowed Usage				



[Link to map color/symbol codes](#)

T109, T110, and T111 are shown as black dashed lines on the map. T105 Rim Trail is shown as a solid green line..

DESCRIPTION: Beginning at its junction with T109, T110 has a five-foot minimum width, with a gradual upward grade of only 10%. It follows an old road used to service the 4-inch waterline that parallels the road, starting at mile 0.2 from the trail beginning. At mile 0.9, the waterline and road turn abruptly left and go up a steep grade; the trail continues straight ahead, now much narrower, but at about the same easy grade. The route, with no switchbacks, is discernible all the way except possibly at one short, eroded area. The path passes through a thick forest of mixed conifers and aspen allowing some highly filtered, distant views.

ACCESS: The upper trail ends for T110 and T111 are reached by driving to milepost 8 along NM 6563. Go 0.6 mile further south and turn right on FR640, Atkinson Canyon Road; drive 0.8 mile to the head of the canyon. After crossing a cattle guard, immediately turn right and park. Return to FR640 and hike 0.5 mile to where T105 crosses the road. Turn right and hike T105 0.5 mile to the upper trail end for T111, at the large National Recreational Trail sign for T105. To reach the signed, upper trail end for T110, follow T111 just 50 feet

The lower T110 trail end is reached by hiking T109 1.5 miles from the gate, turning left at a signed trail junction.

See the write up for T109 for three good loop hikes plus a photo opportunity.

GPS Coordinates for Key Points

NAD83	Lat/Lon hddd mm ss.s	UTM (13 S)
Junction of T105 and T110	N32 50 56.7 W105 48 28.5	424399 3634844
Junction of T109 and T110	N32 51 46.4 W105 48 48.5	423890 3636380

Links to Other Resources

[Area Map](#)

[Sacramento Peak Topo Map](#)

NOTE: Three Loop hikes are described in this trail material. The gpx track is provided for each loop. You may wish to download the gpx track and go to maplorer.com to view the loop profile.

[Loop1 gpx file](#)

[Loop2 gpx file](#)

[Loop3 gpx file](#)

Last Hiked: 8/25/2018

1/3/2019