

T10 Osha Trail

Sacramento Ranger District



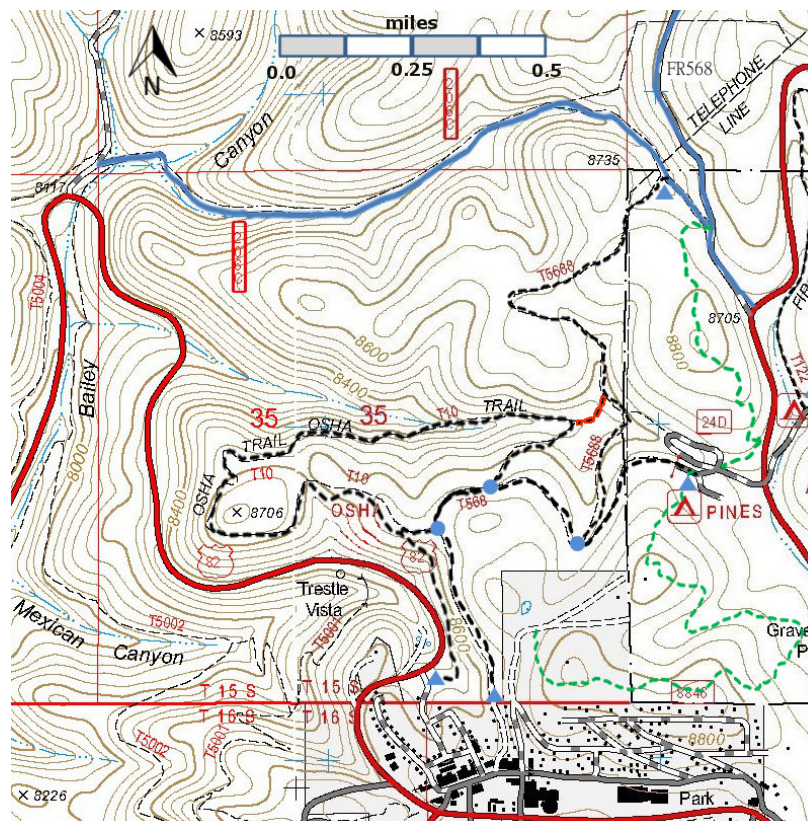
T10
GPS Track (as .GPX)

Left click to open in your
browser; then save from
browser.

LENGTH	ELEVATION	DIFFICULTY	SCENERY
2.6 miles See Text	8,430-8720 ft 290 ft difference	Moderate	2

Allowed Usage				

NOTE: The trailhead for the T10 Osha Trail has been relocated from its former position further west along US82. It was directly opposite the Mexican Canyon Trestle Vista.



[Link to map color/symbol codes](#)

T10, T568, and T5688 are shown as black dashed lines on the map.

DESCRIPTION: Personnel at the Sacramento District Ranger Office are often asked, "Where can we go for a nice short hike that is not too hard, but close to town?" The answer is T10. It is an excellent walk for a family. The interesting, easy-to-follow loop (clockwise recommended) passes through high mountain vegetative and geological environments typical of the Cloudcroft vicinity and other nearby areas at similar elevations. Douglas-fir, oak, and aspen abound. Along the spur there is an excellent view of the Mexican Canyon Trestle and a bench! At mile 0.2 (clockwise) from the junction of the spur with the loop there is a splendid view to the west extending up to 50 miles across the Tularosa Basin. The route from here passes along a bench trail overlooking forested hillsides. Beginning at mile 0.9, [the lowest point on the loop] the path takes on a different character by ascending a small mountain valley for 0.2 mile to a nice meadow scene. When you reach the meadow, please help the Forest Service with its restoration efforts, and stay on trail T10. Several low interpretive signs are along the way. Average gradient around the loop is less than 10%, the maximum being 20%.

ACCESS: To reach T10, start in Cloudcroft at the intersection of New Mexico NM130 and US82 and drive US82 west 0.4 miles. Parking is on the right. The signed Osha trailhead is at the far end of the parking lot.

T568 and T10 are the same trail for about 500 feet, starting 0.5 mile from Burro Avenue in Cloudcroft. T10 can be accessed from T568 at two points.

DISTANCES AND ALTITUDES: Starting at the trailhead, ascending the spur to the loop, once around the loop, and descending via the spur results in a hike of 2.6 miles. The distance around the loop is 1.8 miles, and the length of the spur is 0.4 miles. From the trailhead to the junction of the spur with the loop, the altitude gain is 110 feet. The highest point of the loop is 8720 feet and the lowest point is 8430 feet. You will go down 290 feet and, of course, go up 290 feet.

GPS Coordinates for Key Points

NAD83	Lat/Lon hddd mm ss.s	UTM (13 S)
Junction of T10 and T568 (further from Cloudcroft)	N32 57 59.3 W105 44 37.9	430484 3647817
Junction of T10 and T568 (closer to Cloudcroft)	N32 57 55.4 W105 44 43.7	430334 3647697
Trailhead	N32 57 40.8 W105 44 43.7	430329 3647248

Links to Other Resources

[Link to map of Cloudcroft Area](#)

[Link to Full Topo Map](#)

[Forest Service Resource](#)

Last hiked 2012

2/19/2017