

# T107

## Roundup Grounds Trail

### Sacramento Ranger District

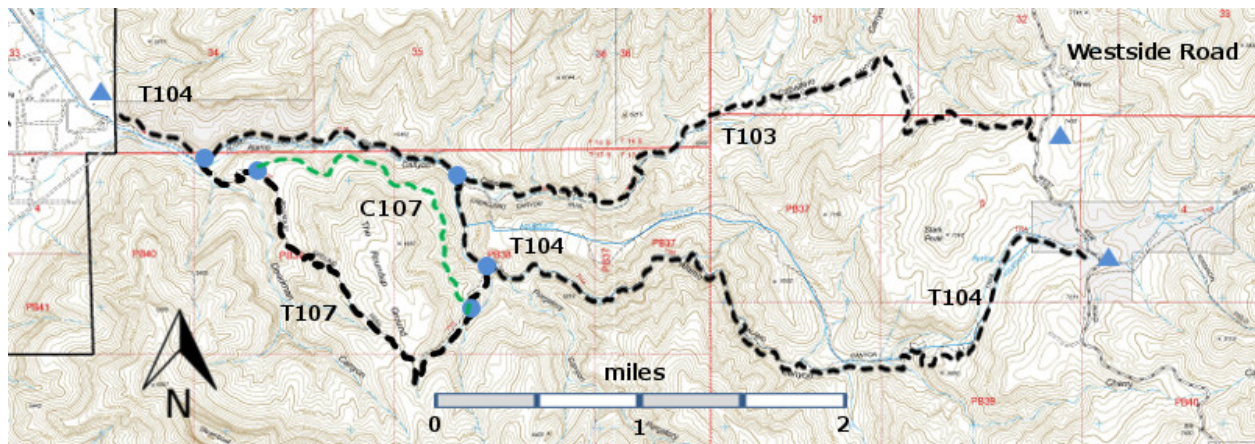


**T107**  
GPS Track (as .GPX)

Left click to open in your browser; then save from browser.

LENGTH	ELEVATION	DIFFICULTY	SCENERY
2.7 miles See Text	4880 - 6000 ft 1120 ft difference	Difficult	4

Allowed Usage				



[Link to map color/symbol codes](#)

T103, T104, and T107 are shown as black dashed lines on the map. An alternate path C107 is shown as a green dashed line.

**DESCRIPTION:** If you are hiking T107 from its northeastern end, hike up out of the draw, and aim for the north side of the bluff just ahead.

T107 provides interesting views along its entire length. Both of its trail ends are accessible from one parking area. For less steep grades, it is best to walk from its northeastern trail end. Unlike T103 and T104, T107 is not a canyon trail, but threads instead along wide open, scenic hillsides with outstanding views.

The Roundup Ground, on a mesa, consists of several hundred acres of immense rolling meadows of abundant grass, with thinly scattered trees and shrubs. The experience of visiting this very special area is

almost mystical, with the tilted Steamboat formation making an impressive backdrop toward the southwest! The distinctive mesa invites hikers to explore its far reaches.

When leaving these lovely meadows, find the trail that goes west from a narrow “neck” on the grassy plateau, just west of where the trail from the east enters the grasslands. As the trail descends into Deadman Canyon, many switchbacks aid in its downward course, up to at least 35% grade. The beauty of Deadman Canyon becomes more and more appealing. The path levels out on a bench just above the vertical walls of an inner gorge, a most beautiful sight. Finally the route ends at the edge of the wide wash near the mouth of Alamo Canyon. Walk across the usually dry drainage to the signed T104 trail for the last half mile to the parking area.

C107 provides an interesting alternative to the upper part of T107. This 1.6 mile path – not an official trail – is shorter than the 2.1 mile segment of T107 between its endpoints and is about 400 feet lower. Whereas T107 takes the hiker across the grasslands of the Roundup Grounds, C107 skirts the edge of Alamo Canyon and provides spectacular views into the canyon. To reach the west end of C107, hike 0.4 miles from the signed west end of T107 to a small cairn, which is on a relatively flat section of T107. To reach the east end of C107, hike 0.2 miles from the junction of T104 and T107. As one comes up out of the gully, there are two substantial cairns about 20 feet apart. The right hand cairn marks the junction with C107. C107 is a single path, easily discernable for most of its length. If the path fades out, keep going in the same direction and look for it to appear once more.

**LENGTH:** 2.7 miles plus 0.5 miles to connect the western end with parking at the west end of T104, plus 2.6 miles to connect the northeast end to the same parking. Total round trip mileage for T107, using T104 as needed, 5.8 miles.

**ACCESS:** To reach the western trail end of T107, hike 0.5 mile up T104 from its lower terminus to where T104 leaves the low bench and enters the wide dry wash of Alamo Canyon. From here, T107 can be seen angling up a low hill on the other side (south) of the wash. The T107 trail end is signed in the wash at the base of that hill.

To access the northeastern end of T107, hike T104 east 2.6 miles from its lower trailhead (or 0.5 mile beyond the junction of T103 with T104). Turn right at the signed T107 trail in the bottom of narrow Alamo Canyon.

#### GPS Coordinates for Key Points

NAD83	Lat/Lon hddd mm ss.s	UTM (13 S)
Junction of T104 and T107 (Northeast)	N32 51 10.6 W105 53 08.8	417116 3635331
Junction of T104 and T107 (West)	N32 51 36.5 W105 54 37.2	414824 3636148
Junction of T107 and C107 (West)	N32 51 33.6 W105 54 18.4	415313 3636054
Junction of T107 and C107 (Southeast)	N32 51 02.1 W105 53 16.4	416916 3635071

## **Links to Other Resources**

[Area Map](#)

[Alamo South - Sacramento Peak Topo Map \(joined\)](#)

[C107-LM.gpx](#)

Last Hiked: 11/18/2019

Updated 12/20/2019