

T105B Sunspot Trail

Sacramento Ranger District



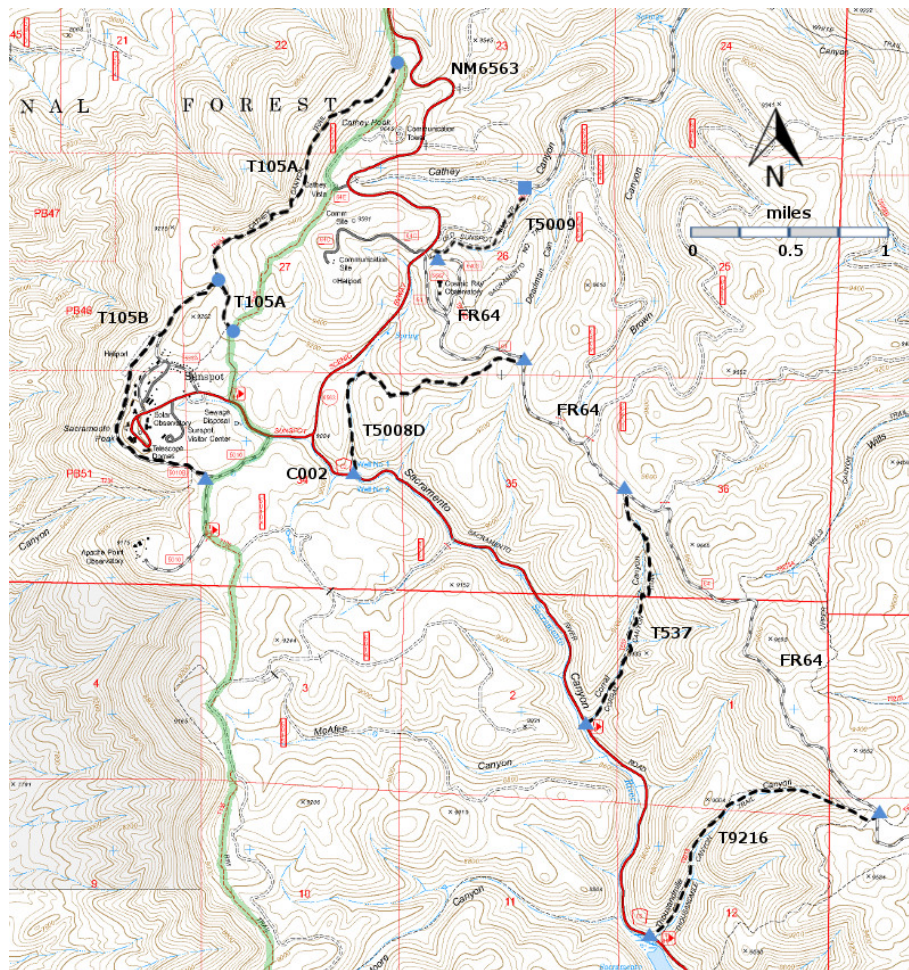
T105B

GPS Track (as .GPX)

Left click to open in your browser; then save from browser.

LENGTH	ELEVATION	DIFFICULTY	SCENERY
1.4 miles	9000 - 9150 ft 150 ft difference	Easy	2

Allowed Usage				



[Link to map color/symbol codes](#)

T105A, T105B, T537, T5008D, T5900, and T9216 are shown as black dashed lines on the map. T105 Rim Trail is shown as a green line.

DESCRIPTION: If one hikes T105B from its junction with T105A, the northern end of T105B soon becomes a part of primitive FR5010 and crosses an old heliport on the northwest side of Sunspot. While passing through the grassy flat area, the route may become obscured, so be watchful for primitive road FR5010B angling up and out of the heliport on the left (southeast) side. This path has been constructed along a bench just below the Sunspot observatory area. Near a gate that must be opened/closed is an unsigned spur trail to the Sunspot Visitor Center, which is almost within sight of the gate. After the gate, T105B winds downhill past the upper trailhead for T234. It soon reaches its southern end at paved Apache Road.

ACCESS: To approach the northern end of T105B, go 0.3 mile north along T105A from its southern trailhead. To reach the south trailhead for T105B, begin at the junction of NM6563 (Sunspot Highway) with Sunspot Road, and proceed 0.2 mile to the turnoff for Apache Point Road. Turn left and drive 0.3 mile to the signed T105B trailhead on the right.

GPS Coordinates for Key Points

NAD83	Lat/Lon hddd mm ss.s	UTM (13 S)
Junction of T105A and T105B(North)	N32 47 52.5 W105 48 50.5	423783 3629178
Trailhead (Apache Point Road)	N32 47 05.7 W105 48 50.8	423765 3627737

Links to Other Resources

[Area Map](#)

[Sacramento Peak Topo Map](#)

Last Hiked: 6/25/2016

Updated 2/19/2017