

T105A Cathey Canyon Trail

Sacramento Ranger District



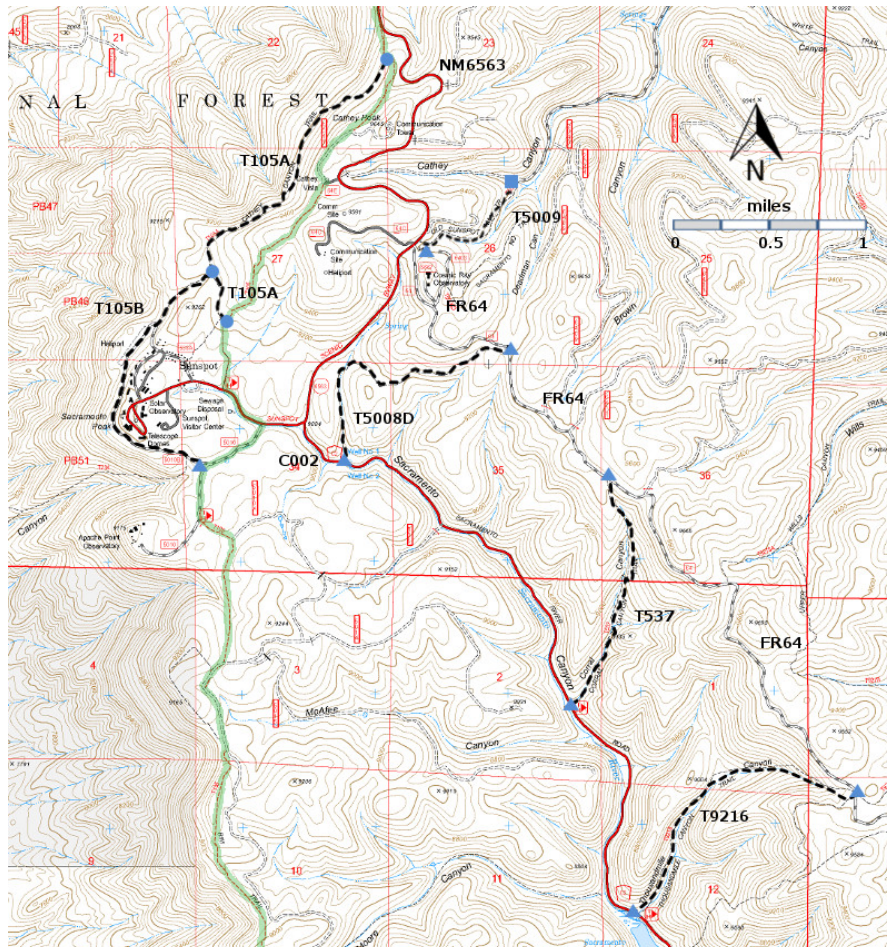
T105A

GPS Track (as .GPX)

Left click to open in your browser; then save from browser.

LENGTH	ELEVATION	DIFFICULTY	SCENERY
1.7 miles	9300-9500 ft 200 ft difference	Easy	3

Allowed Usage				



[Link to map color/symbol codes](#)

T105A, T105B, T537, T5008D, T5900, and T9216 are shown as black dashed lines on the map. T105 Rim Trail is shown as a green line.

DESCRIPTION: T105A provides access to an old growth forest with mixed size trees and open understory. In one area, the lack of aspen indicates it has been spared from natural disturbances for at least 100 years. Nearby, in other old growth, are large mature aspen indicating that fire did occur here about 80 to 100 years ago. Aspen come into an area only after such a blaze, high winds, or heavy snowfall, and are now being forced out by climax species represented by white fir, Douglas-fir, and spruce. Black bear droppings resembling small flattened cow pies, bear diggings for roots and grubs, scat from the secretive bobcat, and squirrel caches (large piles of cone debris) at the bases of white fir or Douglas-fir may all be seen. Also, shelf fungus, resembling a substantially built shelf, sticks out from the sides of standing dead aspen trunks.

ACCESS: Both ends of T105A are reached from the Cathey Vista parking area. To locate this point from Cloudcroft, begin at the NM130 and US82 intersection. Drive NM130 south 1.8 miles and turn right on NM6563, Sunspot Highway. Drive this national scenic highway 12 miles to milepost 12. Continue driving another 0.5 mile to Cathey Canyon Vista turnoff on the right. T105 crosses here in a north-south direction.

To reach the north end of T015A, hike T105 north for 0.8 mile, to its signed junction with T105A. To reach the north end of T105A, go south on T105 for 0.9 mile from Cathey Canyon Vista to the signed T105A trailhead.

GPS Coordinates for Key Points

NAD83	Lat/Lon hddd mm ss.s	UTM (13 S)
Junction of T105 and T105A (North)	N32 48 44.5 W105 48 00.3	425100 3630769
Junction of T105 and T105A (South)	N32 47 40.6 W105 48 46.8	423877 3628809

Links to Other Resources

[Area Map](#)

[Sacramento Peak Topo Map](#)

Last Hiked: April 11, 2014

Updated 1/16/2016