

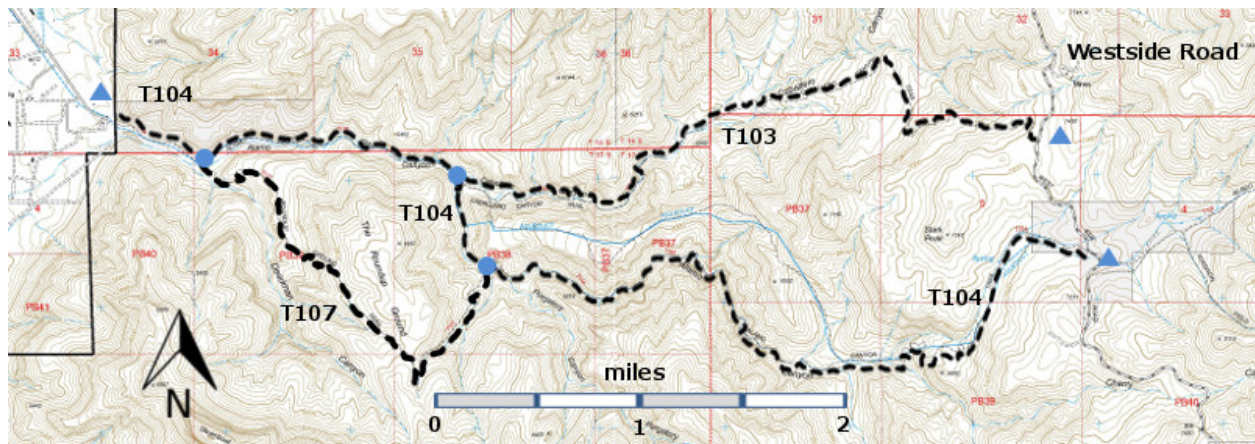
T104
Alamo Canyon Trail
Sacramento Ranger District



T104
 GPS Track (as .GPX)
 Left click to open in your browser; then save from browser.

LENGTH	ELEVATION	DIFFICULTY	SCENIC
7.3 miles	4600 - 7150 ft 2550 ft difference	Difficult	3

Allowed Usage				



[Link to map color/symbol codes](#)

T103, T104, and T107 are shown as black dashed lines on the map..

NOTE: It is strongly recommended that hiking begin from the upper trailheads for both T103 and T104. Although the trailheads are just 0.7 mile apart, the thought of doing a loop involving both routes is overwhelming! If done, allow two days and go up T104.

DESCRIPTION: Beginning at mile 0.3 from its upper end, the path overlies a narrow utility road that passes through 0.5 mile of meadow, the largest meadow known at the 7,000 foot level in the Sacramento Ranger District. The unique, partially riparian area supports many kinds of herbs and shrubs. Shortly after passing the meadow, the route abruptly descends through a picturesque gap into Piñon-Juniper Woodland and other vegetation, along an intermittent stream. Gradients are generally moderate, but steepest between miles 0.8 and 1.4.

At mile 2.0 the signed trail turns left, leaving a buried waterline right-of-way. The foundation ruins of a cabin built in 1926 are on the left, shortly after entering an open area as the trail curves slightly right. The path now often parallels buried, obsolete city waterlines. At mile 2.3, walk *carefully* down slick rock with a large water puddle just below. This precarious maneuver occurs just a short distance upstream from a striking caprock overhang in the canyon wall. Also, old city waterworks ruins are here. The path begins again on the right side, up a bank from the slick streambed. A discernible path is lacking for much of the remaining 4.2 miles. When in doubt follow the canyon bottom.

A narrow canyon with nearly vertical walls is entered at mile 4.6, after reaching the junction with T107, and passing the signed junction with T103 at mile 5.1. The final 2.2 miles of the dry, gravelly, wide bottom of Alamo Canyon may become monotonous. Near the mouth of Alamo Canyon, look to the right (north) for signed T104 as it leaves the streambed and follows a slightly elevated bench. This exit from the streambed is to the right of a T107 sign marking that trail's western trailhead on the left (south) side of the wide wash. T104 ends in 0.5 mile at an iron gate at the mouth of Alamo Canyon.

Note: It seems that T104 has been improved since this description was written. A friend who hiked T104 in December 2014 said that the trail was generally followable and that little hiking along the canyon bottom was required.

ACCESS: To reach the upper T104 trailhead, begin in High Rolls at the junction of US 82 and Westside Road (same as FR90). Drive Westside Road south 10.1 miles to a cattle guard and fire hydrant just beyond. The signed trailhead for T104 is at a gate on the right.

To access the lower trailhead for T104, begin on Alamogordo's east side by following Scenic Drive, a divided 4-lane street, to its southern end. *Continue straight* on signed, but somewhat obscure, paved and narrow Alamo Canyon Road, past the large, fenced, city water tank on the right. Follow the street 1.1 miles to its end at the Alamo Canyon Water Filter Plant. Park on the west side of the filter plant. A short route from the small parking area descends to an iron gate for accessing the signed T104 trailhead.

GPS Coordinates for Key Points

NAD83	Lat/Lon hddd mm ss.s	UTM (13 S)
Upper Trailhead	N32 51 13.3	421937
	W105 50 03.3	3635376
Lower Trailhead	N32 51 47.1	414149
	W105 55 03.3	3636482

Links to Other Resources

[Area Map](#)

[Alamo South - Sacramento Peak Topo Map \(joined\)](#)

Last Hiked: 5/8/2010

1/3/2019