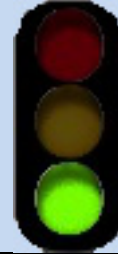


# T68E

## Anderson Canyon Trail

### Guadalupe Ranger District



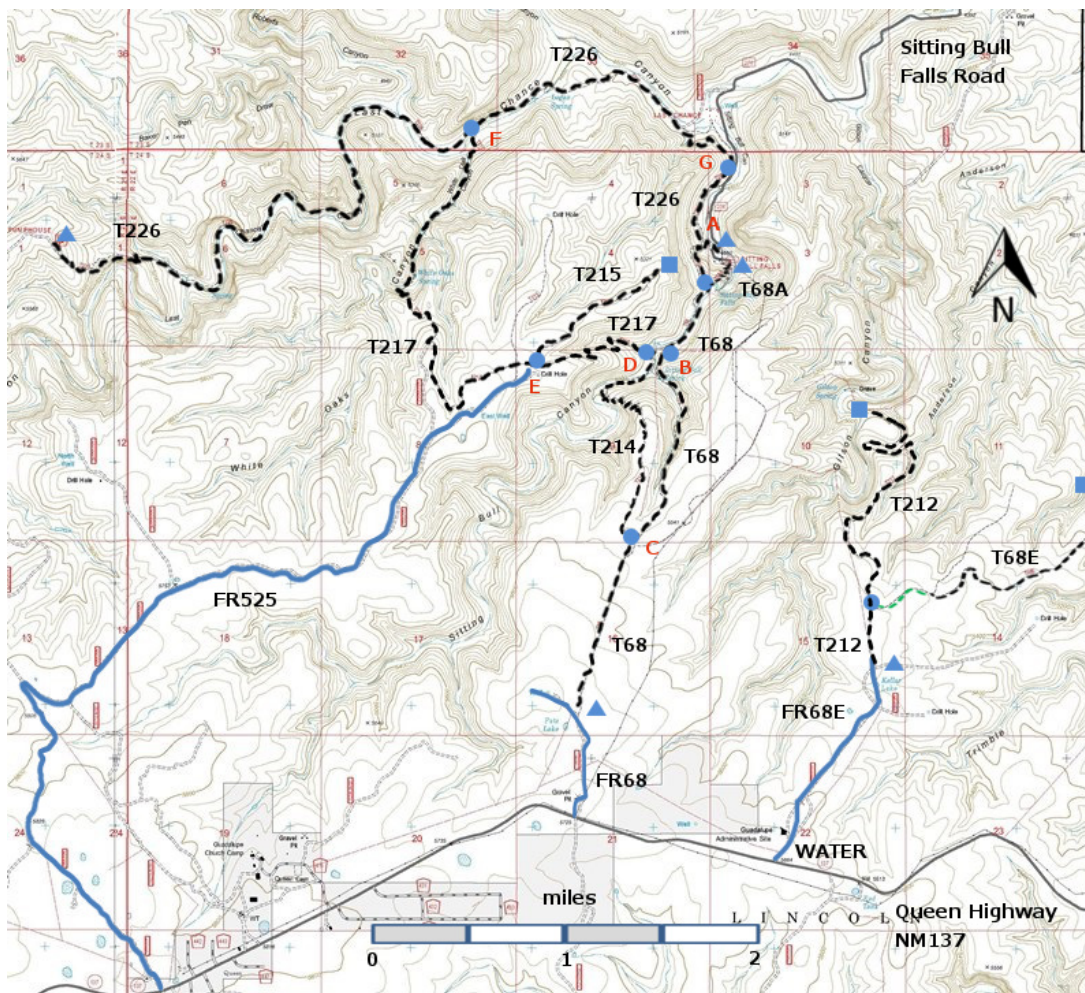
#### T68E

GPS Track (as .GPX)

Left click to open in your browser; then save from browser.

LENGTH	ELEVATION	DIFFICULTY	SCENERY
1.6 miles	5120 - 5520 ft 400 ft difference	Moderate	1

Allowed Usage				



[Link to map color/symbol codes.](#)

T68, T68A, T68E, T212, T214, T215, T217, and T226 are shown as black dashed lines on the map. The trail junctions in the Sitting Bull Falls Area are identified with a letter (A-G), red letters on the map.

**DESCRIPTION:** T68E makes its way across the tableland and descends gradually toward the east. T68E follows part of the old Seven Rivers wagon road that provided access to the tableland in Guadalupe Ranger District prior to the construction of NM137, and that wagon road – now very faint or invisible – would have continued east toward the current US285. T68E is hard to follow. The official end of T68E is at the Forest boundary.

**ACCESS:** To reach the junction of T68E with T212, take US285 northwest from Carlsbad (about 12 miles) to 0.6 mile beyond milepost 45 at its junction with NM137, Queen Highway. Turn left and follow the paved road 32 miles to milepost 22. Then look for a turnoff (north) to Guadalupe Ranger District Admin Site and the public water hydrant. This is FR68E. After crossing the cattle guard, there is a old 68E sign for a dirt road. Ignore this road; it is in bad shape. Continue along the west side of the Admin buildings, past the service area to a barbed wire gate. The trailhead for T212 is 1.1 miles along poorly maintained FR68E from NM137. A high clearance 4WD vehicle is strongly recommended. Hike T212 for 0.3 miles to an unsigned road on the right. The old road crosses piñon-juniper woodland and bends slightly to the northeast and then back to the southeast. The unmarked trailhead for T68E is near the point at which the well-defined old road again bends toward the northeast. If you follow the old road, you can have a pleasant hike down to a tan water tank. At this time, if you wish to follow T68E, across rocky land and through scrub, I strongly recommend that you download the GPS track from the T68E webpage and use that as a route. The trail is faint at best.

#### GPS Coordinates for Key Points

NAD83	Lat/Lon hddd mm ss.s	UTM (13 S)
Junction of T68A and T212	N32 13 10.8 W104 41 02.1	529784 3564829
End at Forest Boundary	N32 13 39.3 W104 39 50.9	531646 3565712

#### Links to Other Resources

[Guadalupe Ranger District Trails](#)

[Area Topo Map \(36 MB\)](#)

[Six Topo Maps](#)

Last Hiked: 3/19/2014

1/2/2020