

T224

Pack Trail

Guadalupe Ranger District



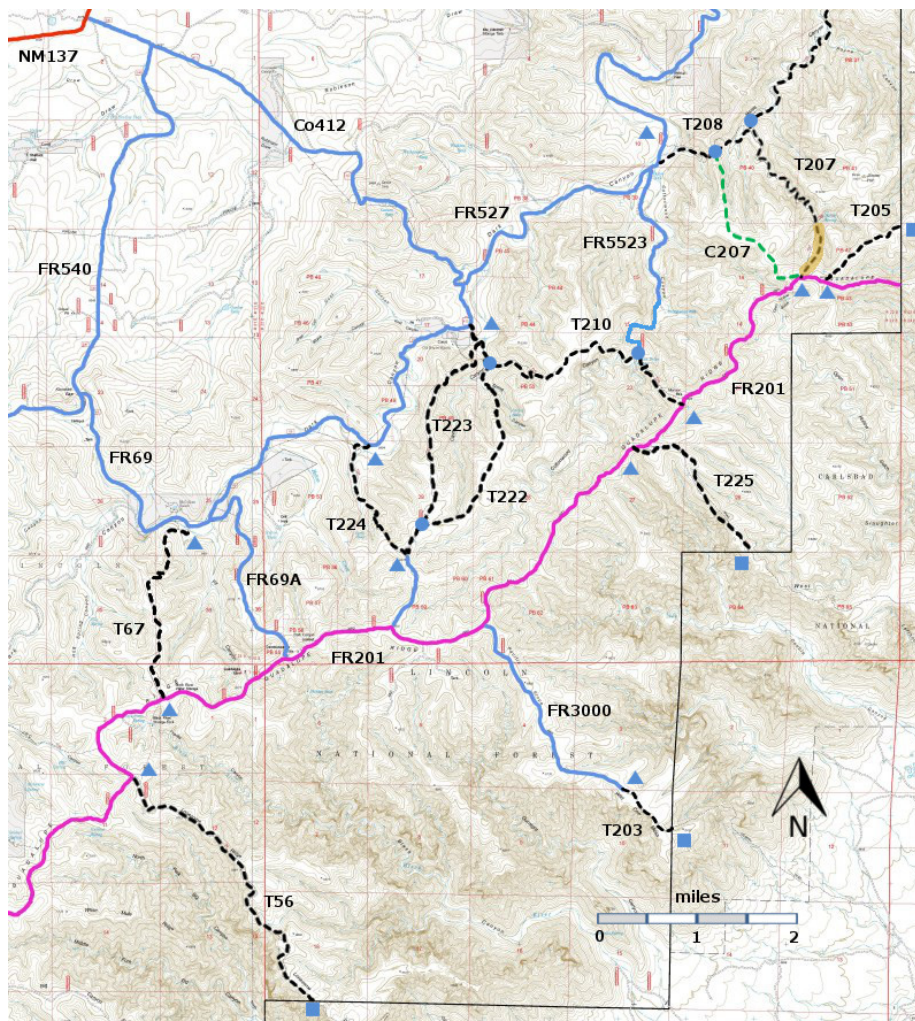
T224

GPS Track (as .GPX)

Left click to open in your browser; then save from browser.

LENGTH	ELEVATION	DIFFICULTY	SCENERY
1.6 miles	6000 - 6760 ft 760 ft difference	Moderate	3

Allowed Usage				



[Link to map color/symbol codes](#)

T56, T67, T203, T205, T207, T208, T210, T222, T223, T224, and T225 are shown as black dashed lines on the map. FR201, shown in magenta, is considered to be impassable for most 4WD high clearance vehicles.

DESCRIPTION: T224, probably constructed by the CCC as a pack trail for the Dark Canyon lookout tower, provides a reasonably constant 10% gradient as it ascends toward the ridge. Start from the lower trailhead and cross a meadow and a draw. Look for a place to scramble out of the draw that appears to be part of an old road. After that, the trail can be followed – look for occasional cairns. The lower portion follows a draw with some ponderosa pines; the upper portion works its way through piñon-juniper woodlands. Open views become available.

T224 intersects FR3004. Turn left on FR3004 to reach T222 and T223. T224 and T223 can make a nice loop hike. T224 provides a modest gradient for ascent, and T223 provides a modest gradient for descent.

ACCESS: To access the lower end of T224, take US285 northwest from Carlsbad (about 12 miles) to 0.6 mile beyond milepost 45 at its junction with NM137, Queen Highway. Turn left and follow the paved road 32 miles to milepost 20. Continue along NM137 for 6.5 miles to the turnoff (left) for FR540, good gravel road. Follow it 0.7 miles to its intersection with FR69 (same as Co 412). Take the left fork and follow FR69 for 6.9 miles. The signed trailhead is on the left. Directly across from this trailhead is monument rock where a homesteader named McCollum carved his name and the date more than a century ago.

The upper ends of T223 and T224 make a junction with FR3004, which is reached from FR201. Driving along FR201 requires a high clearance 4WD vehicle.

GPS Coordinates for Key Points

NAD83	Lat/Lon hddd mm ss.s	UTM (13 S)
Upper Trailhead	N32 05 34.6 W104 43 32.7	525879 3550770
Lower Trailhead	N32 06 28.4 W104 43 54.3	525309 3552424

Links to Other Resources

[Guadalupe Ranger District Trails](#)

[Area Map \(13 MB\)](#)

[Gunsight Canyon Topo Map](#)

Last Hiked: March 20, 2014

1/13/2016