

T223

Telephone Ridge Trail

Guadalupe Ranger District



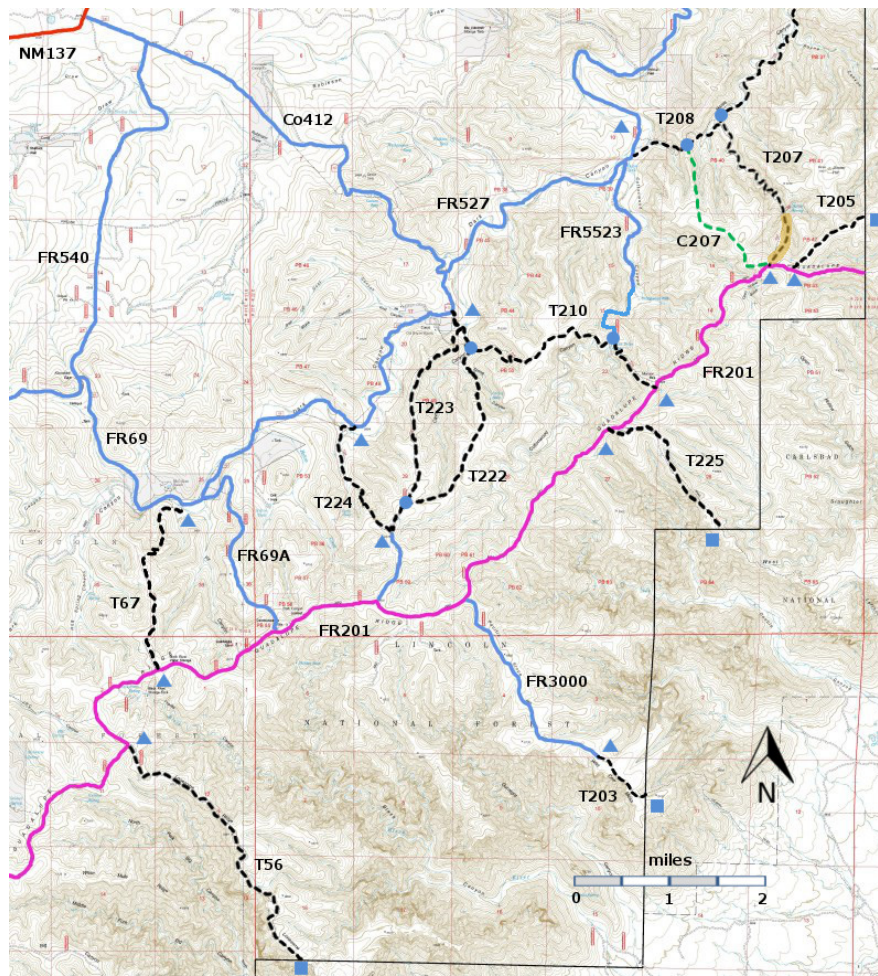
T223

GPS Track (as .GPX)

Left click to open in your browser; then save from browser.

LENGTH	ELEVATION	DIFFICULTY	SCENERY
2.4 miles	5800 - 6720 ft 920 ft difference	Moderate	2

Allowed Usage				



[Link to map color/symbol codes](#)

T56, T67, T203, T205, T207, T208, T210, T222, T223, T224, and T225 are shown as black dashed lines on the map. FR201, shown in magenta, is considered to be impassable for most 4WD high clearance vehicles.

DESCRIPTION: T223 and T224 make a nice loop hike. T224 provides a modest gradient for ascent, partially within a canyon, and T223 provides a modest gradient for descent, partially along a ridge. T224 passes through ponderosa pines and later piñon-juniper woodlands. T223 passes through piñon-juniper woodlands and provides open long range views of the surrounding ridges and canyons.

ACCESS: To access the lower end of T223, take US285 northwest from Carlsbad (about 12 miles) to 0.6 mile beyond milepost 45 at its junction with NM137, Queen Highway. Turn left and follow the paved road 32 miles to milepost 20. Continue along NM137 for 6.5 miles to the turnoff (left) for FR540, a good gravel road. Follow it 0.7 miles to its intersection with FR69 (same as Co 412). Take the left fork and follow FR69 4.9 miles to a set of carsonite signs on the left: "T222", and signs for "To T210" and "To T233". Pass through the gate and angle right. After about 500 feet, the trail reaches a meadow. Angle left and, in about 200 feet, there is a green gate. Pass through the gate --- close and latch it behind you -- and cross the draw to the trail on the other side. The carsonite sign for T223 is past the green gate, about 300 feet further along T222, just across the draw.

The upper ends of T223 and T224 make a junction with FR3004, which is reached from FR201. FR201, shown in magenta, is considered to be impassable for most 4WD high clearance vehicles.

GPS Coordinates for Key Points

NAD83	Lat/Lon hddd mm ss.s	UTM (13 S)
Upper Trailhead	N32 05 34.8 W104 43 32.8	525874 3550778
Junction of T222 and T223	N32 05 46.4 W104 43 27.0	526028 3551135
Lower Trailhead	N32 07 17.4 W104 42 54.5	526870 3553937

Links to Other Resources

[Guadalupe Ranger District Trails](#)

[Area Map \(13 MB\)](#)

[Gunsight Canyon Topo Map](#)

Last Hiked: 11/12/2010

1/2/2020