

T212

Gilson Spring Trail

Guadalupe Ranger District

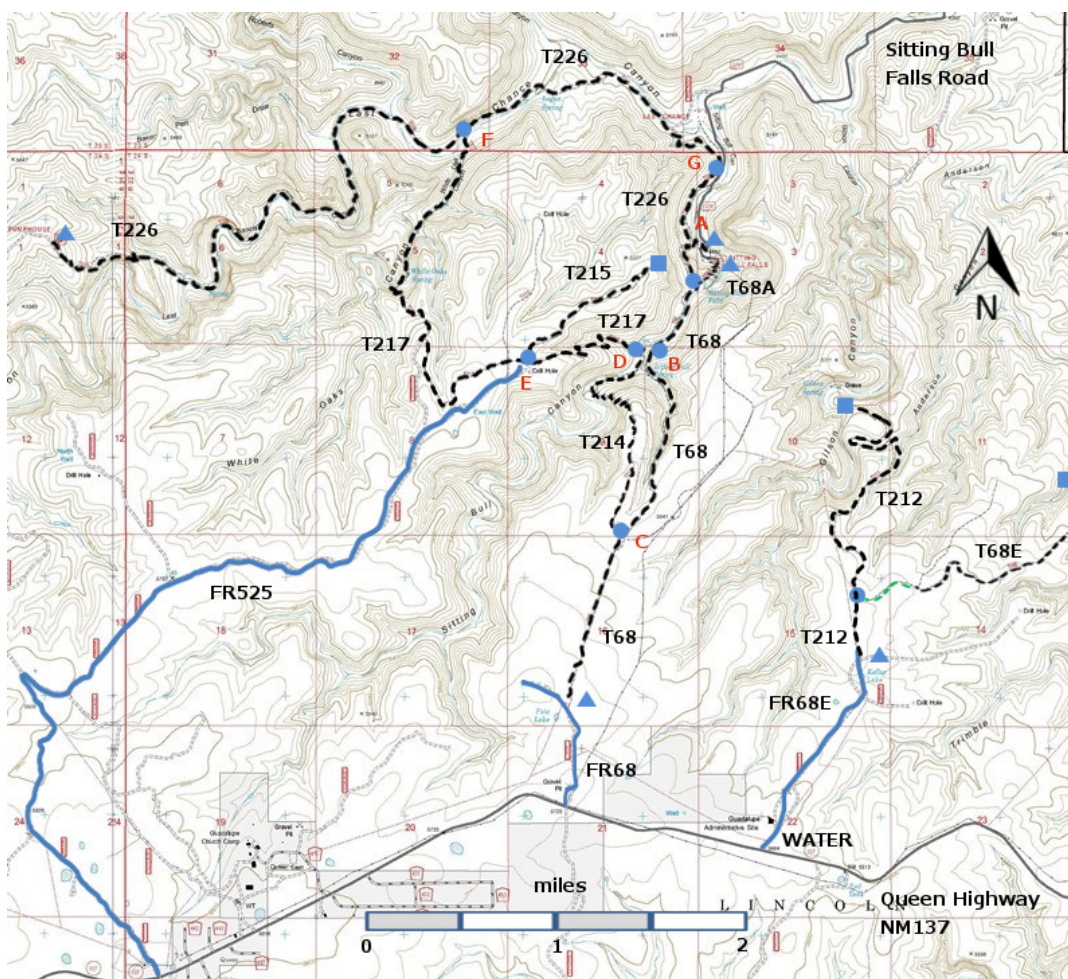


T212
GPS Track (as .GPX)

Left click to open in your browser; then save from browser.

LENGTH	ELEVATION	DIFFICULTY	SCENERY
2.1 miles	5020 - 5520 ft 500 ft difference	Moderate	2

Allowed Usage				



[Link to map color/symbol codes](#)

T68, T68A, T68E, T212, T214, T215, T217, and T226 are shown as black dashed lines on the map. The trail junctions in the Sitting Bull Falls Area are identified with a letter (A-G), red letters on the map.

DESCRIPTION: T212 begins in the tableland just north of the Forest Service Admin Center and descends into Gilson Canyon, where the ruins of the old homestead are still present. For the most part, T212 follows an old road -- no need for bushwhacking and looking for faint trails. The official trail runs 2.1 miles and ends short of the homestead. One can hike 0.5 miles further, past the old corral, to the gravestone of Henry Gilson, born in 1840 and killed in 1883. On the canyon wall opposite the homestead the green streaks tell where the water for the vital spring emerges.

ACCESS: To reach T212, take US285 northwest from Carlsbad (about 12 miles) to 0.6 mile beyond milepost 45 at its junction with NM137, Queen Highway. Turn left and follow the paved road 32 miles to milepost 22. Then look for a turnoff (north) to Guadalupe Ranger District Admin Site and the public water hydrant. This is FR68E. After crossing the cattle guard, there is an old 68E sign for a dirt road. Ignore this road; it is in bad shape. Continue along the west side of the admin buildings, past the service area to a barbed wire gate. The trailhead for T212 is 1.1 miles along poorly maintained FR68E from NM137.

GPS Coordinates for Key Points

NAD83	Lat/Lon hddd mm ss.s	UTM (13 S)
Trailhead	N32 12 54.2 W104 41 01.0	529816 3564318
End in Canyon	N32 14 02.5 W104 41 00.3	529828 3566420
Gravestone	N32 14 09.5 W104 41 08.0	13 S 529625 3566636

Links to Other Resources

[Guadalupe Ranger District Trails](#)

[Area Topo Map \(36 MB\)](#)

[Six Topo Maps](#)

Last Hiked: 2009

1/13/2016