

T208

Horse Canyon Trail

Guadalupe Ranger District



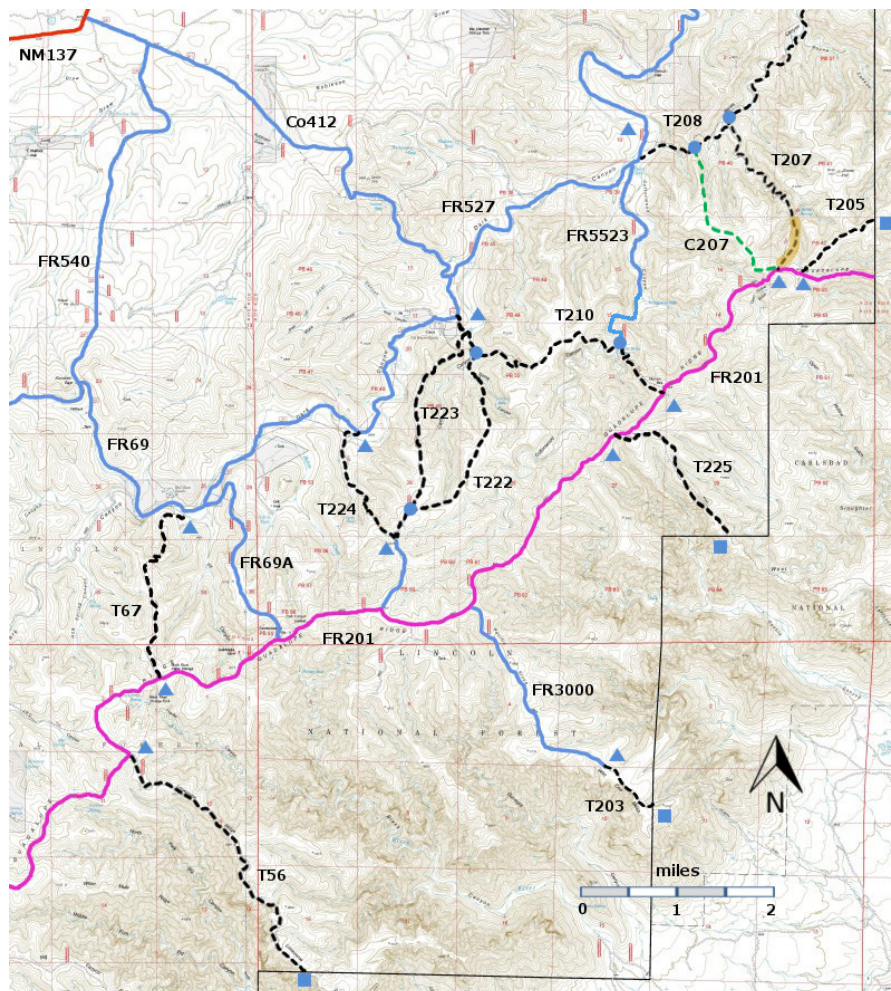
T208

GPS Track (as .GPX)

Left click to open in your browser; then save from browser.

LENGTH	ELEVATION	DIFFICULTY	SCENERY
3.3 miles	5240 - 5880 ft 620ft difference	Moderate	2

Allowed Usage				



[Link to map color/symbol codes](#)

.T56, T67, T203, T205, T207, T208, T210, T222, T223, T224, and T225 are shown as black dashed lines on the map. FR201, shown in magenta, is considered to be impassable for most 4WD high clearance vehicles.

DESCRIPTION: The first segment of T208 makes use of seven switchbacks to climb out of the canyon bottom. The trail is well marked with cairns and hiker signs, but there is no carsonite sign at the eastern end. The western trailhead is at 5560 ft, the saddle at 5880 ft, and the eastern trailhead at 5240 ft.

ACCESS: To reach T208, take US285 northwest from Carlsbad (about 12 miles) to 0.6 mile beyond milepost 45 at its junction with NM137, Queen Highway. Turn left and follow the paved road 32 miles to milepost 20. You may want to look for a turnoff on the north side of the road to Guadalupe Ranger District Admin Site and the public water hydrant. Continue along NM137 6.5 miles to the turnoff (left) for FR540 (which may also be signed as Klondike Gap Road). FR540 is a good gravel road. Follow it 0.7 miles to its intersection with FR69 (same as Co 412 and Cougar Road). Take the left fork and follow FR69 4.5 miles to its junction with FR527 on the left. Pass through the barbed wire gate and close it. Drive 2.7 miles along FR527 to the signed trailhead for T208. Pass through the barbed wire gate and close it. Look to the left to start on T208.

FR527 requires a 4WD high clearance vehicle. It crosses the stream bed several times. In one section, the road bed has eroded into a V, and the sides of the V will be slick when the soil is damp. Do not attempt to drive FR527 unless it is dry.

The present T208 is a truncated version of the former T208, which is shown on the Queen topo map. The full 3.3 miles length of the former T208 is well-marked and can be followed. To reach the eastern trailhead of the former T208, drive an additional 5.0 miles from the western trailhead along FR527. When the Horse Well windmill comes into view, do not drive to it, but rather continue along a primitive road into a primitive camping area. Walk ahead to the trailhead. No carsonite sign is present, but there are hiker signs and cairns.

GPS Coordinates for Key Points

NAD83	Lat/Lon hddd mm ss.s	UTM (13 S)
Trailhead (west)	N32 08 42.0 W104 41 12.6	529534 3556552
Junction of T208 and Connector	N32 08 47.1 W104 40 41.6	530345 3556709
Junction of T207 and T208	N32 08 57.6 W104 40 22.6	530842 3557036
Trailhead (east)	N32 10 11.2 W104 39 53.5	531597 3559303

Links to Other Resources

[Guadalupe Ranger District Trails](#)
[Area Map \(13 MB\)](#)
[Queen Topo Map](#)