

T207

Horse Spring Trail

Guadalupe Ranger District

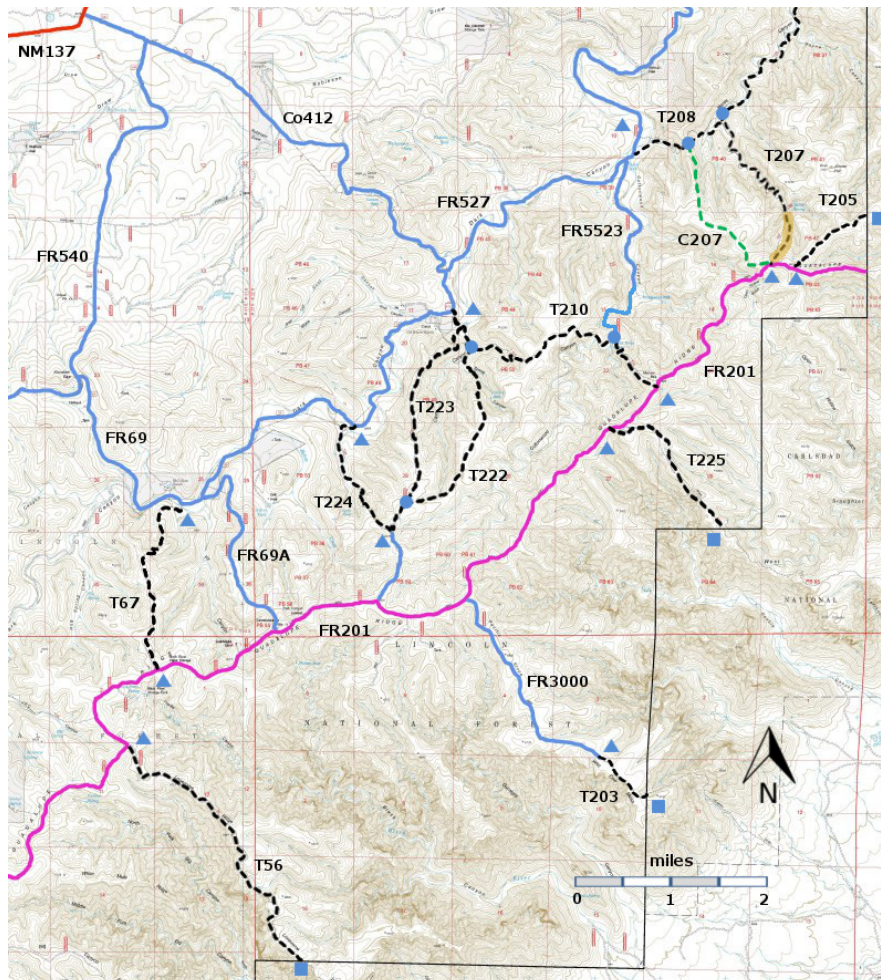


T207
GPS Track (as .GPX)

Left click to open in your browser; then save from browser.

LENGTH	ELEVATION	DIFFICULTY	SCENERY
2.1 miles	5520 - 6600 ft 1080 ft difference	Moderate	2

Allowed Usage				



[Link to map color/symbol codes](#)

T56, T67, T203, T205, T207, T208, T210, T222, T223, T224, and T225 are shown as black dashed lines on the map. FR201, shown in magenta, is considered to be impassable for most 4WD high clearance vehicles.

DESCRIPTION: At the bottom T207 follows an old road, likely used for access to Horse Spring. Although the Forest Service map shows T207 continuing past Horse Spring and up to the ridge where it intersects FR201, such a hike would be very difficult. There are crags to pass. There is an alternative to T207, a 1.7 mile long connector (C207) shown on the map just to the southwest of T207. It is marked with cairns and hiker signs and leads up to the ridge where it intersects FR201.

ACCESS: The lower end of T207 is accessed from T208. Access to T208 is described in its write up. Hike 1.1 miles along T208 to the junction with T207 on the right. The upper end of T207 is a junction with FR201, which is considered impassable for most high clearance 4WD vehicles.

To access the connector C207, hike 0.7 miles along T208 from its western trailhead to gate in a barbed wire fence. Pass through the gate and close it. There is no sign but the path is marked with hiker signs and cairns. The GPX track for C207 is in the **Links to Other Resources** section.

FR527 requires a 4WD high clearance vehicle. It crosses the stream bed several times. In one section, the road bed has eroded into a V, and the sides of the V will be slick when the soil is damp. Do not attempt to drive FR527 unless it is dry.

GPS Coordinates for Key Points

NAD83	Lat/Lon hddd mm ss.s	UTM (13 S)
Junction of T207 and T208	N32 09 01.9 W104 40 22.9	530835 3557169
Upper Trailhead	N32 07 47.6 W104 39 51.4	531665 3554881

Links to Other Resources

[Guadalupe Ranger District Trails](#)

[Area Map \(13 MB\)](#)

[Queen Topo Map](#)

[C207-LM.gpx](#)

Last Hiked: 3/24/2016

1/2/2020