

# T202

## Devil's Den Trail

### Guadalupe Ranger District



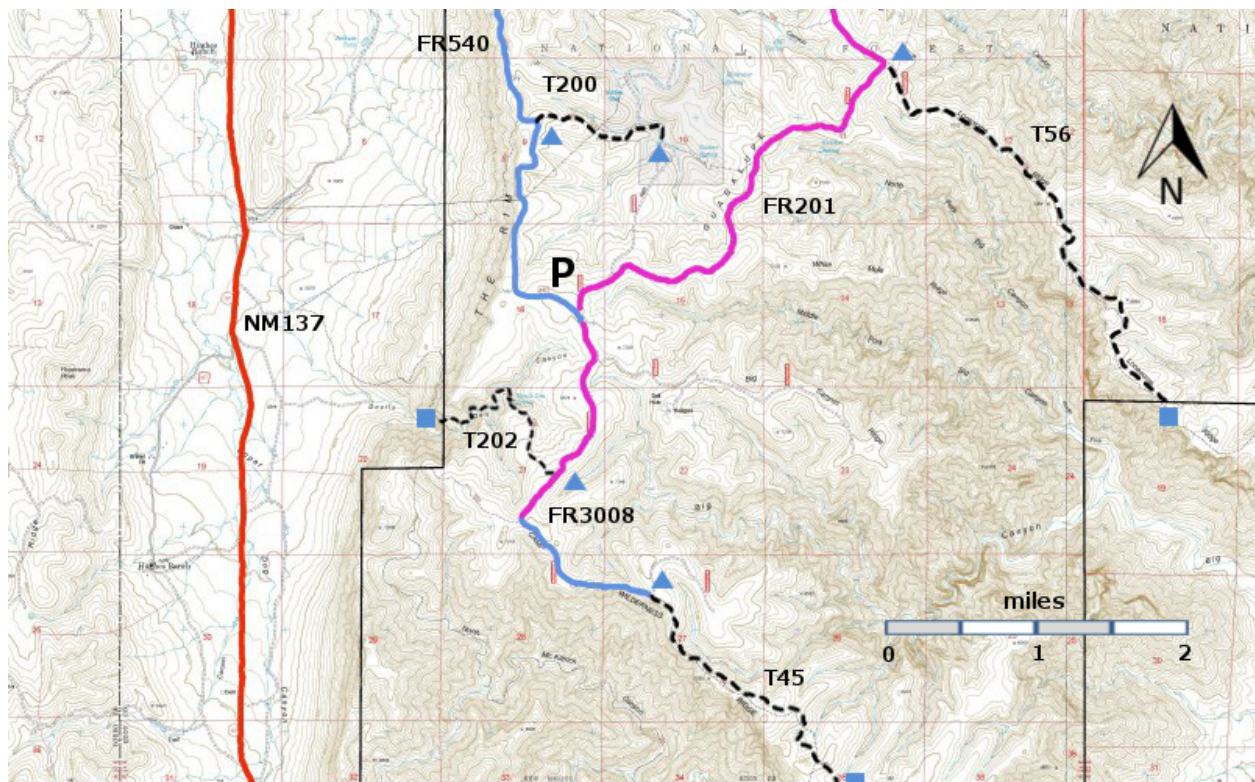
#### T202

GPS Track (as .GPX)

Left click to open in your browser; then save from browser.

LENGTH	ELEVATION	DIFFICULTY	SCENERY
0.9 miles See Text	6900 - 7340 ft 440 ft difference	Difficult	4

Allowed Usage				



[Link to map color/symbol codes](#)

T45, T56, T200, and T202 are shown as black dashed lines on the map. The portions of FR3008 and FR201 shown in magenta are so bad that they are impassable for most high clearance 4WD vehicles. The large "P" shows the location of an open gravel pad where most hikers will park. In this area there is also

a "kiosk" with decent cell phone contact (Verizon, at least) and the GPS coordinates for the site. In case of emergency, you will need to state where you are.

**NOTE:** Welcome to the Guadalupe Ranger District and really bad roads. Lovely hikes are coupled with difficulty in driving to the starting points of the trails! The segment of FR540 south of the parking area (P) (.0.3 miles) and the segment of FR3008 from its junction with FR540 to the canyon rim (1.2 miles), and all of are so bad that they are probably impassable for most high clearance 4WD vehicles. In planning hikes that might make use of these roads count the bad road distance as part of the hike rather than part of the “drive to” access.

**DESCRIPTION:** T202 takes you into Devil’s Den Canyon and a variety of fine views. It begins on the tableland and descends into the canyon, with shade and a bit of moisture. Along the way you pass an old miner’s cabin and Devil’s Den Spring – not much water, but any water is precious in the Guadalupe RD.

The official trail ends, after 0.9 miles, at the canyon bottom. The distance and elevations given at the top of this page are for the official trail. With more work – and more trail finding skills – one can hike another 0.6 miles (and down another 240 feet) to the portal, the forest service boundary, and its spectacular view of the valley to the west of the old reef. Just after a section where the stream bed curves left, look for cairns to lead you up on the right side of the stream. Stay relatively high on the right side of the stream. [If you were to follow the stream itself, you would end up at the pour-off and would have to backtrack to find a path to the portal.] . The trail toward the portal is intermittent. Fix your sights on a set of distinctive vertical rocks that define the gateway, the portal, to the spectacular views. Old maps show a trail leading down from the portal, but it leads to private property with no access allowed to NM137. Please return along T202 to the trailhead.

The GPS track that you can download for T202 provides a track all the way to the portal.

**ACCESS:** To reach T202, take US285 northwest from Carlsbad (about 12 miles) to 0.6 mile beyond milepost 45 at its junction with NM137, Queen Highway. Turn left and follow the paved road 32 miles to milepost 22. If you need to get water, take the FR68E turnoff (right) to Guadalupe Ranger District Administrative Site and the public water hydrant. Otherwise continue along NM137 6.5 miles to the turnoff (left) for FR540 (which may also be signed as Klondike Gap Road). FR540 is a very good gravel road. Follow it 11.6 miles to a large open gravel area (“P” on the map, approximately the intersection of FR540 and FR201). Park in this area, and hike south 0.3 miles along a bad segment of FR540 and 0.8 miles along a bad segment of FR3008 to the T202 trailhead.

**CAUTION:** The 2012 floods damaged the canyon bottom portion of this trail. What was a modest rock scramble along the stream bed has become a hard scramble, with four foot diameter boulders and four foot dropoffs. The view is still spectacular, but you will have to work to get there and back.

#### GPS Coordinates for Key Points

NAD83	Lat/Lon hddd mm ss.s	UTM (13 S)
Trailhead	N32 01 39.3 W104 48 09.4	518638 3543509
End of FS Trail	N32 02 07.7 W104 48 27.0	518177 3544384
Portal (Forest Boundary)	N32 01 56.9 W104 48 52.9	517497 3544050

#### Links to Other Resources

[Guadalupe Ranger District Trails](#)  
[Area Topo Map \(36 MB\)](#)  
[Six Topo Maps](#)

Last Hiked: 2009 (trail), 2013 (roads)

1/13/2016