

T200 Indian Trail

Guadalupe Ranger District



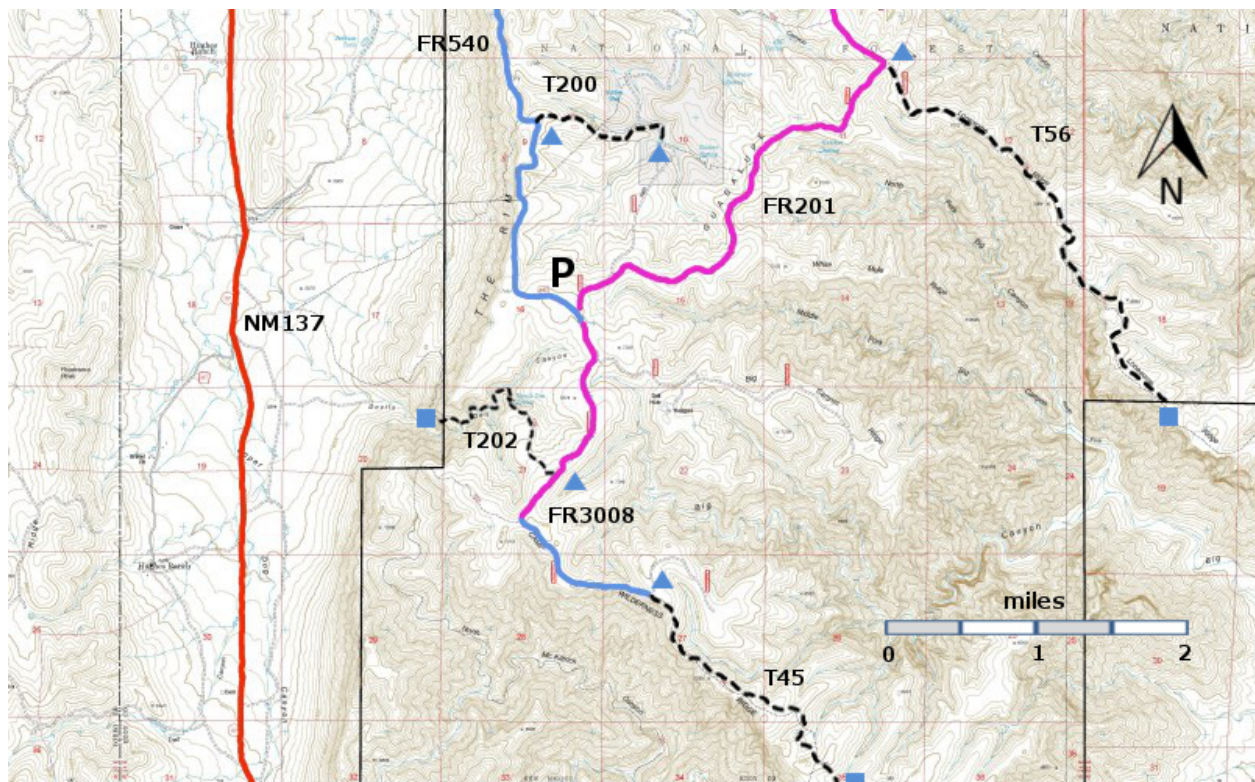
T200

GPS Track (as .GPX)

Left click to open in your browser; then save from browser.

LENGTH	ELEVATION	DIFFICULTY	SCENERY
0.9 miles	6800 - 7040 ft 240 ft difference	Moderate	2

Allowed Usage				



[Link to map color/symbol codes](#)

T45, T56, T200, and T202 are shown as black dashed lines on the map. The portions of FR3008 and FR201 shown in magenta are so bad that they are impassable for most high clearance 4WD vehicles. The large "P" shows the location of an open gravel pad where most hikers will park. In this area there is also

a "kiosk" with decent cell phone contact (Verizon, at least) and the GPS coordinates for the site. In case of emergency, you will need to state where you are.

DESCRIPTION: T200 Indian Trail is a remnant of a much longer trail that connected the interior of the Guadalupe tableland with the valley to the west. Old maps may show parts of this trail. However, to the west, access across private property to NM137 is not allowed.

From the cairn, poorly marked T200 runs gently downhill through piñon-juniper woodland (and some ponderosa pines) to a streambed at 0.6 miles. Beyond the streambed the trail follows a hillside and eventually reaches FR307.

T200 can be a nice "picnic hike". Access via FR540 is possible in a normal vehicle. Take a 0.6 hike down to the streambed, with its flat rock and 4 foot high pouroff (and maybe water), and have a pleasant lunch.

ACCESS: To reach T200, take US285 northwest from Carlsbad (about 12 miles) to 0.6 mile beyond milepost 45 at its junction with NM137, Queen Highway. Turn left and follow the paved road 32 miles to milepost 22. Continue along NM137 6.5 miles to the turnoff (left) for FR540 (which may also be signed as Klondike Gap Road). FR540 is a very good gravel road. Follow it 10.0 miles to the Five Points Vista. The unsigned T200 trailhead is on the east side of the road near a cairn. Access to the other end of T200 would require using FR201, for which a 4WD high clearance vehicle is required.

GPS Coordinates for Key Points

NAD83	Lat/Lon hddd mm ss.s	UTM (13 S)
Trailhead	N32 03 31.4 W104 48 16.3	518452 3546961
Trail End	N32 03 26.6 W104 47 30.4	519654 3546816

Links to Other Resources

[Guadalupe Ranger District Trails](#)

[Area Topo Map \(36 MB\)](#)

[El Paso Gap Topo Map](#)

Last Hiked: 3/17/2014

1/2/2020